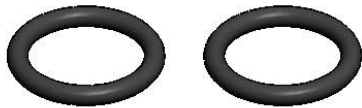




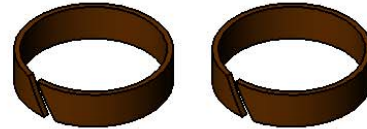
Architect/Engineering Specifications:

Heat resistant o-ring and swivel sleeves rated to 325°F maximum exposure and can be added to any faucets with a double jointed nozzle with heat-resistant on-off control grip. Certified to ASME A112.18.1/CSA B125.1, NSF 61-Section 9 and NSF 372.

Job Name _____
Model Specified _____ Quantity _____
Variations Specified _____
Date _____



(2) Heat Resistant O-Rings



(2) Heat Resistant Swivel Sleeves

Features & Benefits:

- Heat resistant swivel o-rings and swivel sleeves
- Installed for extreme temperature applications
- Parts are rated to 325°F maximum exposure
- Can be added to any faucets with a double jointed nozzle with heat-resistant on-off control grip
- Material: High temperature rubber o-ring and plastic sleeve

Product Compliance:

- ASME A112.18.1 / CSA B125.1
- NSF 61 - Section 9
- NSF 372 (Low Lead Content)

Warranty: One Year (Limited)

Performance Data:

- N/A

