



*The Signature of Quality*

**FEDERAL INDUSTRIES**

A Standex Company

215 Federal Avenue Belleville  
Wisconsin 53508-9201

**Phone:** 800-356-4206

**Fax:** 608-424-3234

**Email:** Geninfo@Federalind.com

**Website:** Federalind.com

Project Name: \_\_\_\_\_

AIA #

Item #: \_\_\_\_\_

Model #: \_\_\_\_\_ Qty: \_\_\_\_\_

SIS #

Approval: \_\_\_\_\_

**Italian Glass 34" Non-Refrigerated Counter Display Case**

Designed for customers looking for rich, up-scale Italian styling for maximum visual appeal that will drive product sales.



Model ITD4826 Shown  
\*Counter Not Provided

MODEL	DIMENSIONS <small>(Includes End Panels)</small>
<input type="checkbox"/> ITD3634	36 x 30 x 34 (in) 914 x 762 x 864 (mm)
<input type="checkbox"/> ITD4834	48 x 30 x 34 (in) 1219 x 762 x 864 (mm)
<input type="checkbox"/> ITD6034	60 x 30 x 34 (in) 1524 x 762 x 864 (mm)

**STANDARD FEATURES**

**Model Features**

- Tempered thermo-pane glass construction
- Tilt-out front glass for easy cleaning
- Removable sliding glass rear doors
- Stainless steel interior
- Cord & plug

**Shelving**

- Three tiers of adjustable tempered glass shelves are adjustable up and down and can be tilted in two positions ( 0°/ 5° angle).

**Lighting**

- 3500K LED top light and shelf lights
- DLC certified, IP66 rated

**Agency Approvals**

- UL and UL Sanitation Listed to NSF-2
- DOE 2017 Compliant.

**OPTIONAL ACCESSORIES**

- o      o      o
- k      k      )
- k      -
- K      M      #      O



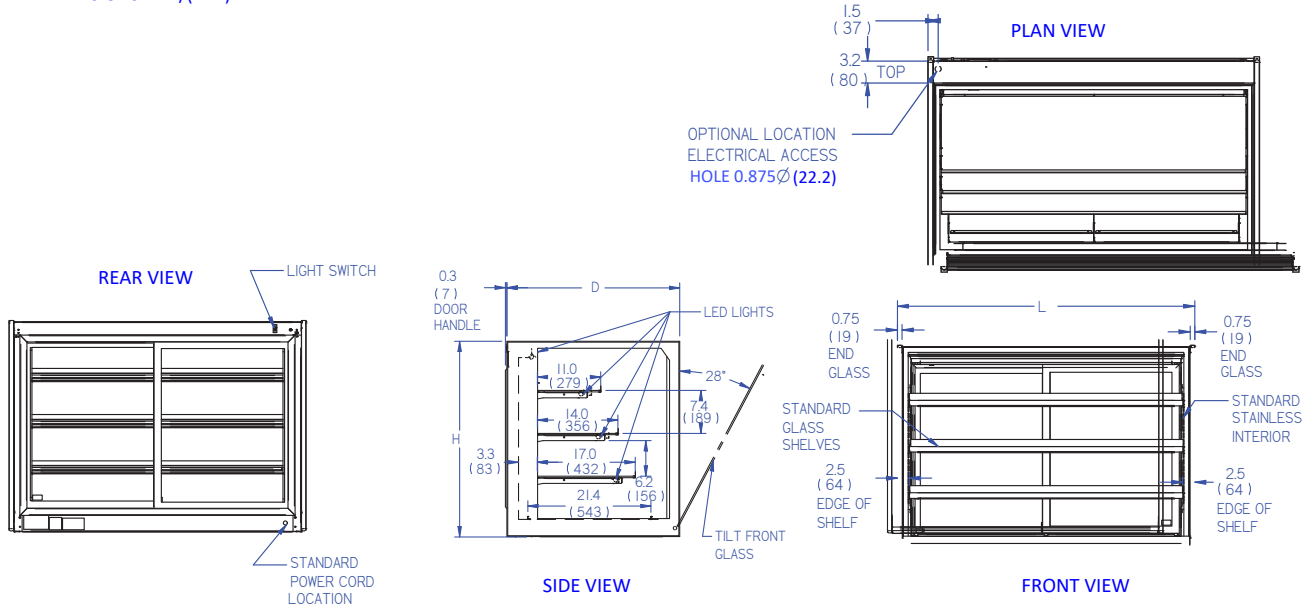
Note: Information is subject to change at any time. Visit [www.federalind.com](http://www.federalind.com) For the most current specs.

AIA #	<h1 style="margin: 0;">Italian Glass 34" Non-Refrigerated Counter Display Case</h1>
SIS #	

**Product Specifications**

<b>Zone</b>	Intended product to be displayed	<b>Avg prod temp °F / °C</b>
All	Non-refrigerated food products	N / A

DIMENSIONS: xx"/(mm)



DIMENSION TOLERANCE +/-0.19 (4.8)

E375I-2

MODEL	DIMENSION			SHELVING					DISPLA Y AREA SQ IN	INTERIOR VOLUME CU FT	STANDARD CONNECT CORD & PLUG			SHIP WEIGHT
	L	D	H	# OF TIER	DT	DM	DB	L			120/60/1 2-WIRE + GROUND			
	in	in	in		in	in	in	in			AMPS	MAX FUSE SIZE	NEMA CORD & PLUG	
	mm	mm	mm		mm	mm	mm	mm			mm			
ITD3634	36.00	30.00	34.00	3	11	14	17	30.88	1980 SQ IN	15.5 CU FT	1.5	15	NEMA 5-15P	500 LBS
	914	762	864		279	356	432	784						227 KILO
ITD4834	48.00	30.00	34.00	3	11	14	17	42.88	2720 SQ IN	21 CU FT	1.5	15	NEMA 5-15P	450 LBS
	1219	762	864		279	356	432	1089						204 KILO
ITD6034	60.00	30.00	34.00	3	11	14	17	54.88	3470 SQ IN	26 CU FT	1.5	15	NEMA 5-15P	625 LBS
	1524	762	864		279	356	432	1394						283 KILO

• Due to continuing engineering improvements, specifications are subject to change without notice.



**FEDERAL INDUSTRIES**  
A Standex Company  
215 Federal Avenue Belleville, Wisconsin 53508-9201

**Phone:** 800-356-4206  
**Fax:** 608-424-3234  
**Email:** Geninfo@Federalind.com  
**Website:** Federalind.com