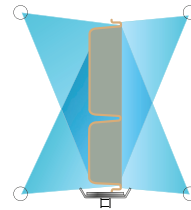




TRAC 878

Automatic Triple Tank Tray Washer

- Automatic conveyor, triple tank tray washer with recirculating pre-wash, wash and rinse and fresh water final rinse
- 197 gallons/hour final rinse consumption
- Capacity is up to 878 trays per hour (based on a 15" tray)



Insinger's traywashers were developed specifically to optimally clean and sanitize ware by reaching all corners and crevices with a vertical spray.

STANDARD FEATURES

- Tank heat: 15 kW electric immersion heater or steam injector
- Capillary thermometers for wash and rinse
- In-line thermometer for final rinse
- Vacuum breaker on all incoming water lines
- Manifold clean-out brush
- Vents with adjustable damper controls
- Single point electrical connection: motor, controls and tank heat (Booster requires a separate connection)
- Inspection door
- S/S frame, legs and feet
- S/S front enclosure panel
- Automatic tank fill
- Low water protection
- Detergent connection provision
- Top mounted NEMA 12 control panel
- Simplified scrap screen design
- Door safety switch
- Standard frame drip proof motors
- Override switch for de-liming
- End caps/pipe plugs secured to prevent loss
- Tray unload table

OPTIONS

- Stainless steel steam coil tank heat
- Steam booster
- Electric booster
- Pressure reduction valve and line strainer
- Security package
- Insulated hood and door
- Chemical sanitizer injector package for low temperature operations (pump by others)
- Tray Dryer
- Tray Stacker

SPECIFIER STATEMENT

Specified unit will be an Insinger TRAC 878 automatic triple tank tray washer. Features include capillary thermometers for wash and rinse, inline thermometer for final rinse, vacuum breaker, vents with adjustable damper controls, inspection door, 304 stainless steel construction, automatic tank fill, low water protection, door safety switch, and a tray unload table.



Additional Information

Capacity Per Hour	878 trays
Tank Capacity	11.2 gallons (pre-wash) 15.3 gallons (wash) 11.5 gallons (rinse)
Motor Size	1/2 hp (pre-wash) 3 hp (wash) 2 hp (rinse) 1/8 hp (conveyor)
Electric Usage	8 kW wash tank 8 kW rinse tank 24 kW booster (40° rise) 36 kW booster (70° rise)
Steam Consumption at 20 psi min.	54 lbs./hour tank 70 lbs./hour booster 40° rise 122 lbs./hour booster 70° rise
Final Rinse Peak Flow at 20 psi min.	3.28 gallons/minute
Final Rinse Consumption at 20 psi min.	197 gallons/hour
Exhaust Hood Requirement	100 CFM Load 300 CFM unload
Peak Rate Drain Flow	23 gallons/minute
Shipping Weight	1100 lbs.

Machine Electrical*		
Motors, Controls, Tank Heat	Steam	Electric without booster
208/3/60	22.7	67.1
240/3/60	20.6	59.0
480/3/60	12.5	36.9
380/3/50	10.2	29.4

*Booster heater wired separately. Machine load only listed above.

SPECIFICATIONS

CONSTRUCTION- Hood and tank constructed of 16 gauge type 304 S/S. Hood unit of all welded seamless construction. S/S frame, legs and feet. All internal castings are non-corrosive lead free nickel alloy, bronze or S/S.

DOORS- Extra large die formed 18-8 type 304 S/S front inspection door riding in all S/S channels. A triple ply leading edge on the door channels made of S/S with no plastic or nylon sleeves or liners used. Two intermediate S/S door-safety stops on the door.

CONVEYORS- One S/S roller conveyor chain with tray cradles. Width between guide rails is factory-adjustable from 1.5" to 3.7". Conveyor accommodates trays up to 15" high. Conveyor drive system includes direct drive gear motor with frictionless, trouble-free overload release system continuously running. Trays conveyed automatically through washing and rinsing systems powered by independent conveyor motor.

PUMP- Centrifugal type "packless" pump with a brass petcock drains. Construction includes ceramic seal and a balanced cast impeller on a precision ground stainless steel shaft, extension or sleeve. All working parts mounted as an assembly and removable as a unit without disturbing pump housing. 2 hp wash motor standard horizontal C-face frame, drip proof, internally cooled with ball-bearing construction.

CONTROLS- Top mounted control cabinet, NEMA 12 rated with heat insulation provided between hood and control cabinet, housing motor controls and overload protection, transformer, contactors and all dishwasher integral controls. All controls safe low voltage 24 VAC.

ENERGY SAVER- Electric photo-eye automatically operates the final rinse solenoid only when a tray passes, saving water and energy. The eye also activates an adjustable timer control. If no tray passes during the set time, the machine shuts down.

SPRAY SYSTEM- Wash and final rinse spray systems are made of 18-8 type 304 stainless steel pipe. Wash assemblies removable without the use of tools.

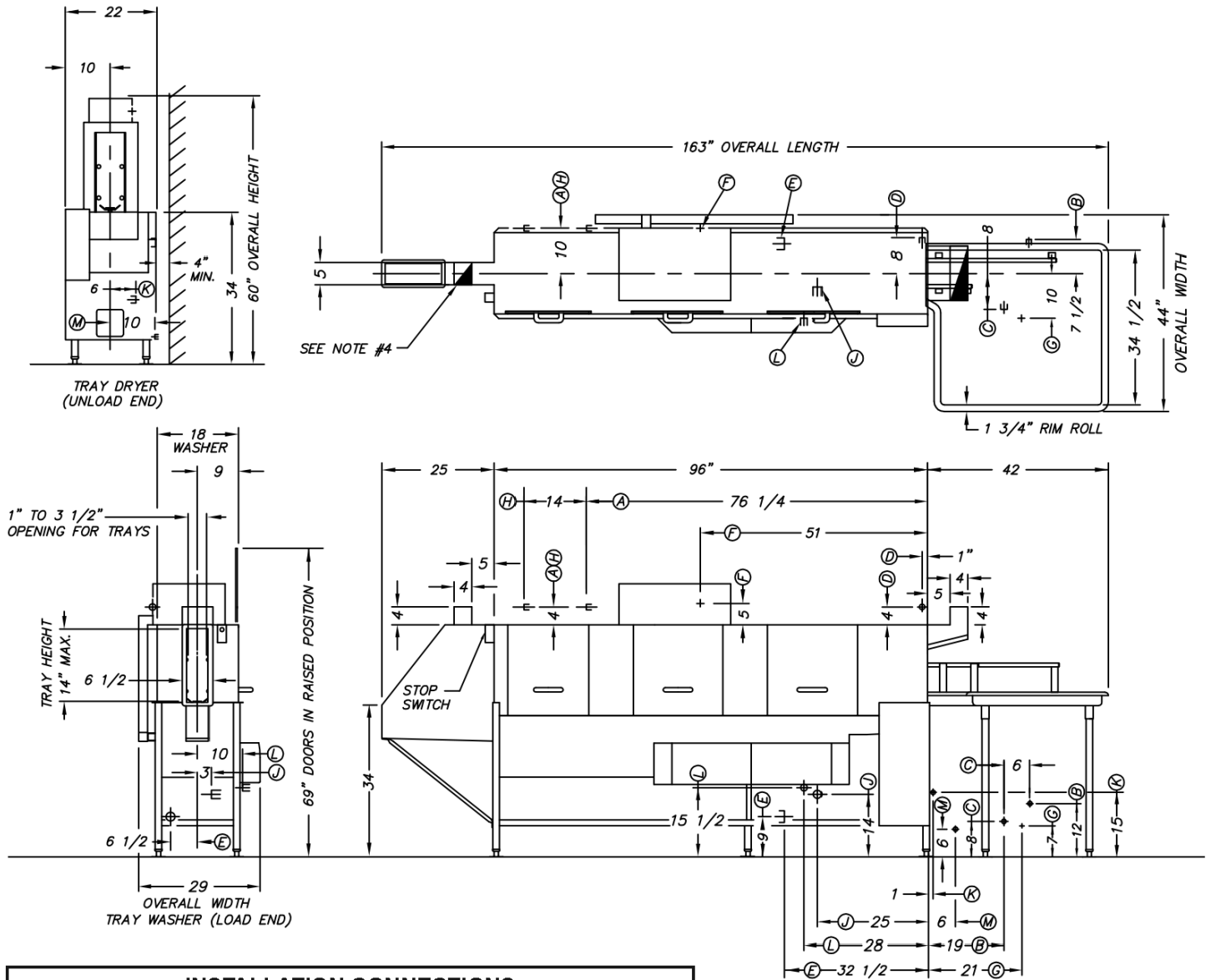
WASH- Four wash arms threaded into S/S manifold. (2 on each side of conveyor). Each pipe designed with 8 high pressure action cleansing slots. The slots are precision milled for water control producing a fan spray.

FINAL RINSE- Eight nozzle assemblies on either side of conveyor threaded into S/S pipes. Nozzle assemblies produce a fan spray reducing water consumption, maximizing heat retention.

DRAIN- Drain valve externally controlled. Overflow assembly with skimmer cap is removable without the use of tools for drain line inspection. Heater is protected by low water level control.

UNLOAD TABLE- a stainless steel tray unload table receives clean trays. Table constructed with guide rails which ease the trays onto table.

Technical Drawings



INSTALLATION CONNECTIONS		
LTR	DESCRIPTION	SIZE
A	Hot Water to Auto Fill - 110°F	1/2" FIPS
B	Hot Water to Steam Booster - 110°F/140°F	1/2" FIPS
C	Hot Water to Electric Booster - 110°F/140°F	1/2" FIPS
D	Hot Water to Final Rinse - 180°F	1/2" FIPS
E	Drain Connection - Common	1 1/2" FIPS
F	Electric Service - 16kW + 5.6 HP	67.1 FLA
G	Electric Service - Booster 36 kW	101 FLA
H	Cold Water - PW Tempering	1/2" FIPS
J	Steam to Tanks	3/4" FIPS
K	Steam to Steam Booster (40° or 70°)	1/2" or 1" FIPS
L	Condensate Return - Coils Only	1/2" FIPS
M	Condensate Return - Steam Booster	1/2" FIPS

NOTES:

1. Electrical Voltage: 208V/3PH/60Hz. Total Amp Draw is 168.1 FLA.
2. Totally enclosed motors furnished.
3. Stainless Steel Frame, Legs, Tray Unload Furnished.
4. Vents 4 x 12 (500CFM) & 4 x 5 (50CFM) with Adjustable Dampers Furnished at Ends of Washer.