

## Camshelving® Basics Series

### 4-Shelf Stationary Add-On Unit

- 1 Post Height**  
72" (1830 mm)
- 1 Shelf Depth**  
24" (610 mm)
- 1 Shelf Length**  
48" (1220 mm)



#### Add-On Unit Includes:

2 stationary posts with leveling feet installed – pre-assembled with post connectors and collar wedges, 4 bags of 8 each stationary traverse dovetails (4 ea. A and B), vented shelf plates (for 4 shelves), 8 stationary traverses and instructions.

#### Features & Benefits

##### Strong Technology

Posts and Traverses are built using advanced manufacturing technology and the use of a non-corrosive composite material. The robust design along with unique composite material gives Elements an unprecedented longevity, durability and weight-bearing capacity in the industry. Shelves up 48" (1220 mm) long hold up to 600 lbs. (272 kg) evenly distributed static weight. Shelves 54" – 60" (1380 mm – 1530 mm) long hold up to 500 lbs. (227 kg) each. Shelves connected by Corner Connectors hold up to 300 lbs. (136 kg) on a 30" (760 mm) to 48" (1220 mm) traverse.

##### Smart Design

Similar to other shelving products by Cambro, shelf plates can be easily removed, washed individually or in sections and placed in an open-end Camrack® (OETR314) and washed in a commercial dishwasher.

##### Uncompromised Reliability

Resistant to scratching, peeling, warping and corrosion every component in Camshelving® Basics was rigorously tested for strength, reliability and performance. Functions in temperatures down to -36°F (-38°C) or warm environments up to 190°F (88°C).

##### Exceptional Value

Innovative design helps maximize valuable space and provides strength and stability. Straight line components are attached by sharing posts of existing units with no loss of weight-bearing capacity. Camshelving® Basics features a lifetime warranty against rust and corrosion eliminating the need for unnecessary replacement costs.

##### Requires Minimal Assembly

Can be put together with the use of a rubber mallet. Two-piece dovetails secure Traverses so they can be set easily into place.

Item No. \_\_\_\_\_

Specifier Identification No. \_\_\_\_\_

Model No. \_\_\_\_\_

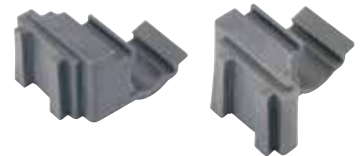
Quantity \_\_\_\_\_



Four Shelf Add-On Unit consists of one Post Kit and four Vented Shelf Kits.



Dunnage Stand  
Recommended for Units  
54" (1380 mm) or longer.



Set of Left and Right Corner Connectors  
(1 set required per shelf).

##### Flexible Design

Shelves can be easily adjusted at 4" (102 mm) increments. Add a shelf to an existing unit by simply ordering the appropriate Shelf Kit. Adjustable foot on bottom of each stationary post adjusts easily for floor irregularities so shelf contents are securely stored and leveled.

##### Optional Accessories

Includes Wall Fastener, Seismic Foot and Identification Tag for shelves. Identification Tag clips easily onto traverses.

#### Approvals



Does not include Wall Fastener, Seismic Foot, Corner Connector and ID Tag.

# Camshelving® Basics Series

## 4-Shelf Stationary Add-On Unit

### 1 Post Height

72" (1830 mm)

### 1 Shelf Depth

24" (610 mm)

### 1 Shelf Length

48" (1220 mm)



### Add-On Unit Includes:

2 stationary posts with leveling feet installed – pre-assembled with post connectors and collar wedges, 4 bags of 8 each stationary traverse dovetails (4 ea. A and B), vented shelf plates (for 4 shelves), 8 stationary traverses and instructions.

### Four Shelf Add-On Unit

CODE	TRAVERSE IN. MM	CASE LBS. (CUBE)	CASE KG. (CUBE M <sup>3</sup> )
72" (1830 mm) Height 24" (610 mm) Depth			
CBA244872V4	48" 1220 mm	49.65 (8.49)	22,52 (0,24)

### Corner Connector Set

CODE	DESCRIPTION	CASE LBS. (CUBE)	CASE KG. (CUBE M <sup>3</sup> )
CBCC1	Right and Left	0.36 (0.05)	0,16 (0,00)

Case Pack: 1 set

### Dunnage Stands

6 3/4" (165 mm) Clearance (from floor to bottom of traverse)

CODE	DEPTH IN. MM	CASE LBS. (CUBE)	CASE KG. (CUBE M <sup>3</sup> )
CBDS18H6	18" 460 mm	1.19 (0.22)	0,87 (0,01)
CBDS21H6	21" 540 mm	2.02 (0.26)	0,92 (0,01)
CBDS24H6	24" 610 mm	2.08 (0.30)	0,95 (0,01)

Case Pack: 1

## Architect Specs

<b>Posts:</b>	Proprietary non-corrosive composite material.
<b>Post Connectors:</b>	Glass Filled Nylon.
<b>Traverses:</b>	Proprietary non-corrosive composite material.
<b>Vented Shelf Plates:</b>	Polypropylene.
<b>Corner Connectors:</b>	Glass Filled Nylon.
<b>Adjustable Foot:</b>	Glass Filled Nylon.
<b>Seismic Foot:</b>	Stainless steel post and wide foot plate, 3 holes for bolts. (Bolts not provided).
<b>Wall Fastener:</b>	Stainless Steel.
<b>Dovetails:</b>	Resin Nylon.
<b>Post Collar Wedges:</b>	Resin Polypropylene.
<b>Dunnage Stand Bracket:</b>	Resin Polypropylene.

Item No. \_\_\_\_\_

Specifier Identification No. \_\_\_\_\_

Model No. \_\_\_\_\_

Quantity \_\_\_\_\_

## Optional Accessories

<b>Seismic Foot</b>	<input type="checkbox"/> CSEQ3	<b>Color:</b> Silver	<b>Case pack:</b> 4 each (Bolts not provided)
<b>Wall Fastener</b>	<input type="checkbox"/> CSWF	<b>Color:</b> Silver	<b>Case pack:</b> 4 each
<b>Identification Tag 6"</b>	<input type="checkbox"/> CSID6	<b>Color:</b> White/Clear	<b>Case pack:</b> 12 each

## Standard Color

Brushed Graphite (580)

## Approvals



COMPONENT

Does not include Wall Fastener, Seismic Foot, Corner Connector and ID Tag.

**CAMBRO**  
TRUSTED FOR GENERATIONS™

© Cambro Manufacturing Company 5801 Skylab Road, Huntington Beach, California 92647-2056-U.S.A.  
Telephone 714 848 1555 Toll Free 800 854 7631 Customer Service 800 833 3003

D081511