



The Signature of Quality

FEDERAL INDUSTRIES

A Standex Company

215 Federal Avenue Belleville
Wisconsin 53508-9201

Phone: 800-356-4206

Fax: 608-424-3234

Email: Geninfo@Federalind.com

Website: Federalind.com

Project Name: _____

AIA #

Item #: _____

Model #: _____ Qty: _____

SIS #

Approval: _____

Italian Glass Series - Heated Display Case 26"

Designed for customers looking for rich, up-scale Italian styling for maximum visual appeal that will drive product sales.



Model ITH4834-B18
Shown with Options

MODEL	DIMENSIONS <small>(Includes End Panels)</small>
<input type="checkbox"/> ITH3626-B18	36 x 30.75 x 44 (in) 914 x 762 x 1118 (mm)
<input type="checkbox"/> ITH4826-B18	48 x 30.75 x 44 (in) 1219 x 762 x 1118 (mm)
<input type="checkbox"/> ITH6026-B18	60 x 30.75 x 44 (in) 1524 x 762 x 1118 (mm)

STANDARD FEATURES

Model Features

- All tempered glass construction
- Tilt-out front glass for easy cleaning
- Removable sliding glass rear doors
- Stainless steel interior
- Powder coated steel base assembly with a choice of standard laminates
- Adjustable leg levelers
- Cord & plug

Shelving

- Two tiers of adjustable stainless steel shelves. Adjustable up and down and can be tilted in two positions (0°/ 5° angle).

Lighting

- 3500K LED top light and shelf lights
- DLC certified, IP66 rated

Agency Approvals

- UL, C-UL, and UL Sanitation Listed to NSF-4

OPTIONAL ACCESSORIES

- | | |
|--|--|
| <input type="checkbox"/> Special base laminates | <input type="checkbox"/> 6"/152mm Legs with or without skirt |
| <input type="checkbox"/> Glass shelving | <input type="checkbox"/> Rear package shelf |
| <input type="checkbox"/> 21" Stainless steel shelving (all shelves) | <input type="checkbox"/> Joining kit for continuous line-ups - Available with divider only |
| <input type="checkbox"/> Reflective rear doors | |
| <input type="checkbox"/> Reflective end glass | |
| <input type="checkbox"/> Humidity package | |
| <input type="checkbox"/> 2 ½" (63.5 mm) or 4"/102mm casters recessed casters | |



WARRANTY*
One year Parts and Labor
2nd thru 5th year part only
service compressor
(U.S.A. and Canada)

Note: Information is subject to change at any time. Visit www.federalind.com For the most current specs.

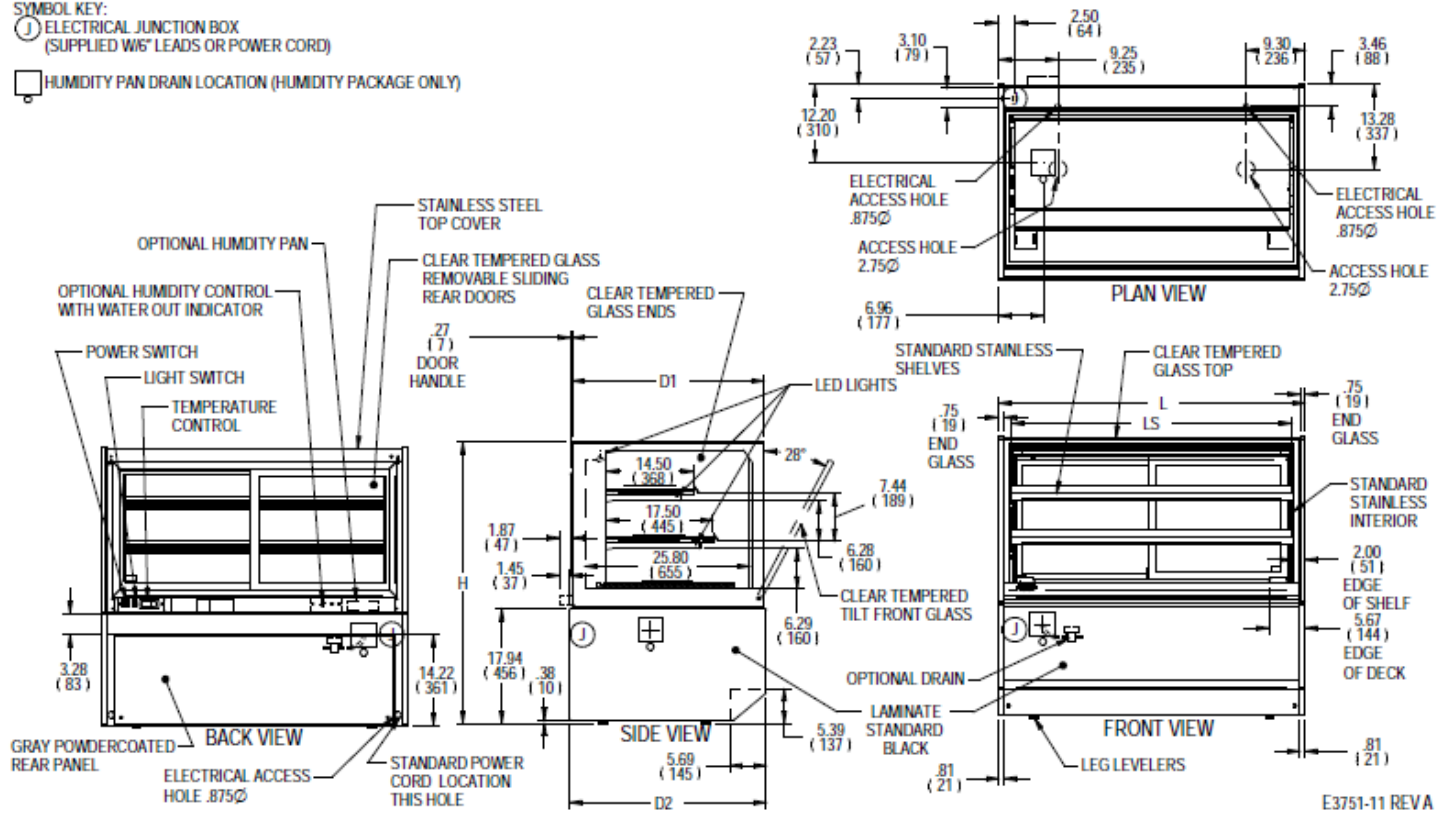
AIA #	<h1>Italian Glass Series - Heated Display Case 26"</h1>
SIS #	Product Specifications

Zone	Intended product to be displayed	Avg prod temp °F / °C
All	Packages and Unpackaged Heated Products	160°F/(71.1°C)

DIMENSION: xx"/(mm)

SYMBOL KEY:

- Ⓜ ELECTRICAL JUNCTION BOX (SUPPLIED W/6" LEADS OR POWER CORD)
- HUMIDITY PAN DRAIN LOCATION (HUMIDITY PACKAGE ONLY)



MODEL	DIMENSIONS				# OF TIERS	SHELVING			DISPLAY AREA SQ IN	INTERIOR VOLUME CU FT	STANDARD CONNECTION CORD & PLUG			SHIP WEIGHT
	L	D1	D2	H		# OF TIERS	DT	DB			LS	2-WIRE + GROUND		
	in	in	in	in			in	in			in	208-240/60/1		
	mm	mm	mm	mm		mm	mm	mm			mm	AMPS	MAX FUSE SIZE	KILO
ITH3626-B18	36	30	30.75	44	2	14.5	17.5	30.73	1630	11.4	9 @ 208	15	NEMA 6-15P	625
	914	762	781	1118		368	445	781			12 @ 240			283
ITH4826-B18	48	30	30.75	44	2	14.5	17.5	42.73	2240	15.4	9 @ 208	15	NEMA 6-15P	685
	1219	762	781	1118		368	445	1085			12 @ 240			311
ITH6026-B18	60	30	30.75	44	2	14.5	17.5	54.73	2850	19	9 @ 208	15	NEMA 6-15P	825
	1524	762	781	1118		368	445	1390			12 @ 240			374

• Due to continuing engineering improvements, specifications are subject to change without notice



FEDERAL INDUSTRIES
 A Standex Company
 215 Federal Avenue Belleville, Wisconsin 53508-9201

Phone: 800-356-4206
Fax: 608-424-3234
Email: Geninfo@Federalind.com
Website: Federalind.com

