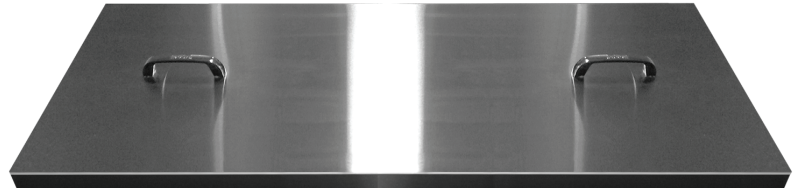
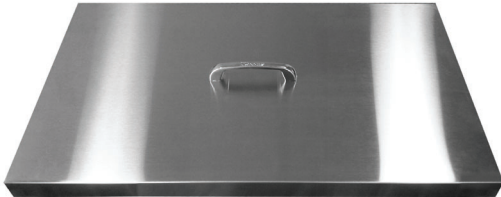
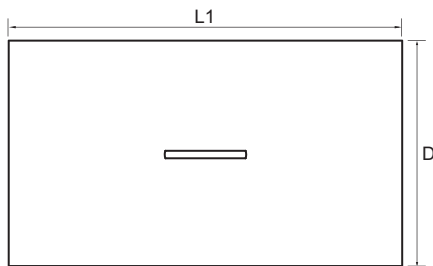


Project :	
Model # :	
Item # :	Qty :
Available W/H :	
Approval :	

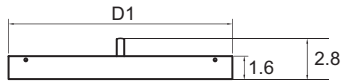
Removable Covers for Sandwich / Salad Units



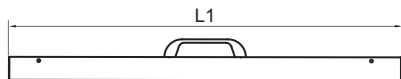
PLAN VIEW



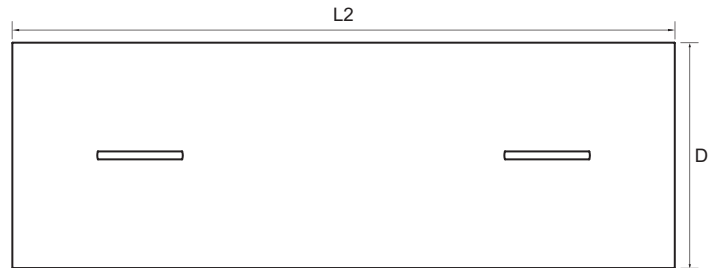
Plan View



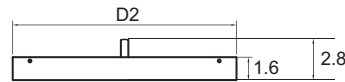
Side View



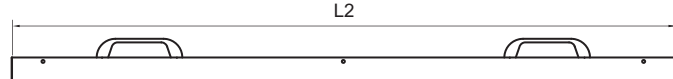
Front View



Plan View



Side View



Front View

28"(L) Prep Table	36"(L) Prep Table	48"(L) Prep Table	60"(L) Prep Table	72"(L) Prep Table
Item No. RCT-28 (1ea)	Item No. RCT-36 (1ea)	Item No. RCT-48 (1ea)	Item No. RCT-60 (1ea)	Item No. RCT-72-L (1ea for left) RCT-72-R (1ea for right)
Dimension (Inch) 26.9(L1) x 15.4(D1) x 2.8(H)	Dimension 33.3(L2) x 15.4(D1) x 2.8(H)	Dimension 43.3(L2) x 14.6(D2) x 2.8(H)	Dimension 57.1(L1) x 14.6(D2) x 2.8(H)	Dimension 36.3(L2) x 14.6(D1) x 2.8(H) 29.4(L1) x 14.6(D1) x 2.8(H)
Weight (Lbs.) 7.5	Weight (Lbs.) 8.5	Weight (Lbs.) 12	Weight (Lbs.) 15.5 (ea)	Weight (Lbs.) 8.5 (left) / 7.5 (right)
Applicable Models PST-28-N / MST-28-N TST-28SD-N TST-48SD-08S-N TST-60SD-08S-N EST-28-N6	Applicable Models MST-36-N6 TST-36SD-N6 EST-36-N6	Applicable Models PST-48-N MST-48-N TST-48SD-N TST-72SD-12S-N EST-48-N	Applicable Models PST-60-N MST-60-N TST-60SD-N EST-60-N	Applicable Models PST-72-N MST-72-N TST-72SD-N TST-72SD-08S-N EST-72-N