

TILTING SKILLETS

ELECTRIC, MANUAL TILTING
TABLE-TOP MOUNTED
MADE IN USA

CLASSIC MODEL RES

STANDARD FEATURES



Model RES-1824-9 with optional
1 1/2" draw-off and table

- ◆ 304 stainless seam welded pan with:
 - Center trunnion mounted
 - 304 stainless clad cooking surface
- ◆ 304 stainless support frame
- ◆ 304 stainless, reinforced, water-resistant control console
- ◆ 304 stainless, reinforced base plate
- ◆ Adjustable thermostat (175°F to 400°F)
- ◆ High limit safety thermostat
- ◆ Field replaceable heating elements

Legion equipment is built to comply with applicable standards for manufacturers. Approval agencies may include ASME, NSF, UL, ETL, AGA, CSA, CGA, and others. Legion reserves the right of design improvement or modification as warranted.

MODELS AND CAPACITIES					OPTIONAL FEATURES AND ACCESSORIES	
					See price list for supplemental information regarding options	
	2.5" Pans or Cooking Baskets	Griddle Area (in. ²)	Kettle (Gals.)	Oven Volume (ft. ³)	<input type="checkbox"/> Single fill faucet with bracket & swing nozzle <input type="checkbox"/> Dual fill faucet with bracket & swing nozzle <input type="checkbox"/> 48" flexible spray hose assembly (vinyl or stainless) for use with dual or single fill faucet <input type="checkbox"/> Faucet bracket <input type="checkbox"/> Automatic water filling meter (Call for information regarding additional faucet options) <input type="checkbox"/> 1 piece lift-off cover <input type="checkbox"/> R-539A Table <input type="checkbox"/> Classic care kit <input type="checkbox"/> Flat bottom scoop <input type="checkbox"/> Electric indicating timer with buzzer	Prison/Security Options: <input type="checkbox"/> Fasteners (<i>screws & nuts</i>) <input type="checkbox"/> Nut driver tool <input type="checkbox"/> Screw driver tool <input type="checkbox"/> Draw-off nut driver tool <input type="checkbox"/> Lockable control cover
RES-1824	1	432	13 gal.	1.8		
RES-2418	1	432	13 gal.	1.8		
Select draw-off: <input type="checkbox"/> 1 1/2" Compression Select voltage : <input type="checkbox"/> 208V <input type="checkbox"/> 240V <input type="checkbox"/> 380V <input type="checkbox"/> 415V <input type="checkbox"/> 440V <input type="checkbox"/> 480V Select phase: <input type="checkbox"/> 1Ø <input type="checkbox"/> 3Ø						

Revision 500

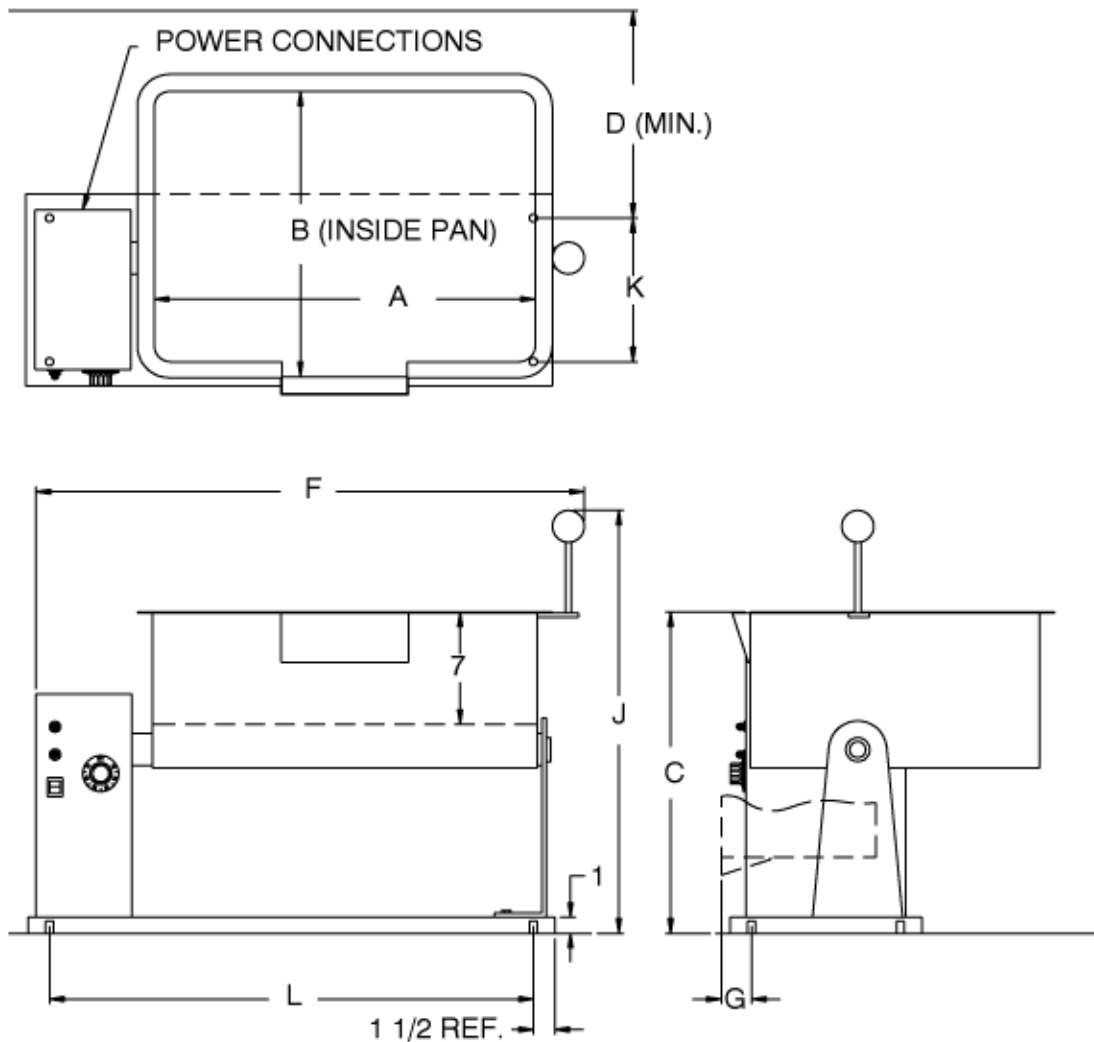


CLASSIC MODEL RES

ELECTRIC, MANUAL TILTING
TABLE-TOP MOUNTED
MADE IN USA

TILTING SKILLETS

DRAWING REPRESENTS MODEL RES-2418



MODEL RES DIMENSIONS									
Model	A	B	C	D	F	G	J	K	L
RES 1824	24.0	18.0	20.0	10.0	35.0	2.3	26.5	9.0	30.0
RES 2418	18.0	24.0	20.0	13.0	29.0	2.3	26.5	9.0	24.0

RES ELECTRICAL SPECIFICATIONS													
<i>(Table represents amperes per phase)</i>													
Model*	kW	208 Volt		240 Volt		380 Volt		415 Volt		440 Volt		480 Volt	
		1Ø	3Ø	1Ø	3Ø	1Ø	3Ø	1Ø	3Ø	1Ø	3Ø	1Ø	3Ø
RES-1824	6.0	28.8	16.7	25.0	14.4	15.8	9.1	14.5	8.3	13.6	7.9	12.5	7.2
RES-2418	6.0	28.8	16.7	25.0	14.4	15.8	9.1	14.5	8.3	13.6	7.9	12.5	7.2

Revision 500



LEGION LEGION INDUSTRIES, INC. ♦ P.O. BOX F ♦ DALLAS, PA ♦ 18612
(800) 833-9803 ♦ (570) 675-1595 ♦ Fax: (570) 675-7551 ♦ www.legionindustries.com