

# "4CS4R5" MODULAR BASE WORK TABLES

## *14GA Stainless Steel Top w/5" Rear Riser - Sliding Doors*

**FEATURES:**

- 5" Backsplash Top With 1-1/2" Stallion Edge On Front With 90 Degree Bend Down Side Edge For Table Line-Up
- Top Is Sound Deadened Reinforced With 2"x3" Channel Running Entire Length Of Top
- Stainless Steel Leg With Adjustable Feet
- Optional Fixed (Suffix "-1S") Or Adjustable (Suffix "-1AS") Intermediate Shelf Available
- 36" Working Height
- Shipped Standard Welded Set-Up

**SPECIFICATIONS:**

- Top: Stainless Steel Cabinet Tops TIG Welded, Exposed Welds Are Polished To Match Adjacent Surface #4 Polished, Satin Finish
- Removable Stainless Steel Legs
- Sliding Doors Are Constructed As Double Panel Doors
- Top: 14GA Type 300 Stainless Steel With #4 Polish, Satin Finish
- Body: 18GA Type 430 Stainless Steel
- Legs: Stainless Steel With Adjustable Feet



4CS4R5-3060

**CERTIFICATIONS:**

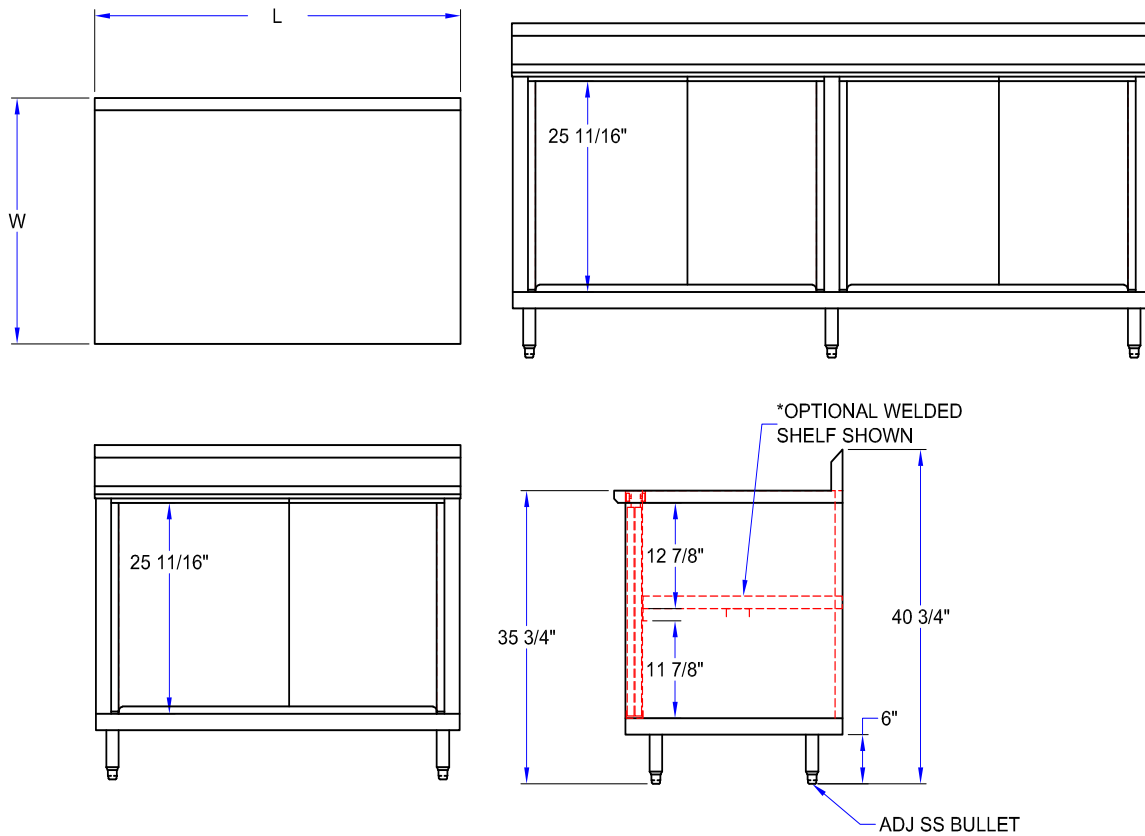


### "4CS4R5" MODULAR BASE WORK TABLES

LENGTH	24" WIDE	WT (LBS)	30" WIDE	WT (LBS)	36" WIDE	WT (LBS)
48"	<b>4CS4R5-2448</b>	280	<b>4CS4R5-3048</b>	305	<b>4CS4R5-3648</b>	340
60"	<b>4CS4R5-2460</b>	320	<b>4CS4R5-3060</b>	345	<b>4CS4R5-3660</b>	380
72"	<b>4CS4R5-2472</b>	365	<b>4CS4R5-3072</b>	385	<b>4CS4R5-3672</b>	425
84"	<b>4CS4R5-2484</b>	405	<b>4CS4R5-3084</b>	425	<b>4CS4R5-3684</b>	465
96"	<b>4CS4R5-2496</b>	455	<b>4CS4R5-3096</b>	470	<b>4CS4R5-3696</b>	510
108"	<b>4CS4R5-24108</b>	495	<b>4CS4R5-30108</b>	510	<b>4CS4R5-36108</b>	550
120"	<b>4CS4R5-24120</b>	530	<b>4CS4R5-30120</b>	560	<b>4CS4R5-36120</b>	590
132"	<b>4CS4R5-24132</b>	565	<b>4CS4R5-30132</b>	603	<b>4CS4R5-36132</b>	633
144"	<b>4CS4R5-24144</b>	600	<b>4CS4R5-30144</b>	645	<b>4CS4R5-36144</b>	675

ALL DIMENSIONS ARE TYPICAL. TOLERANCE +/- .500". JOHN BOOS & CO. RESERVES THE RIGHT TO CHANGE SPECIFICATIONS WITHOUT NOTICE.

# DETAILED SPECIFICATIONS



## MODEL # STRUCTURE

4 = 14GA Top  
 CS = Sliding Doors  
 4 = 430 S.S. Base



**4CS4R5-2460**

R5 = 5" Tall Riser  
 24 = Width  
 60 = Length

### "4CS4R5" MODULAR BASE WORK TABLES

LENGTH	24" WIDE	WT (LBS)	30" WIDE	WT (LBS)	36" WIDE	WT (LBS)
48"	<b>4CS4R5-2448</b>	280	<b>4CS4R5-3048</b>	305	<b>4CS4R5-3648</b>	340
60"	<b>4CS4R5-2460</b>	320	<b>4CS4R5-3060</b>	345	<b>4CS4R5-3660</b>	380
72"	<b>4CS4R5-2472</b>	365	<b>4CS4R5-3072</b>	385	<b>4CS4R5-3672</b>	425
84"	<b>4CS4R5-2484</b>	405	<b>4CS4R5-3084</b>	425	<b>4CS4R5-3684</b>	465
96"	<b>4CS4R5-2496</b>	455	<b>4CS4R5-3096</b>	470	<b>4CS4R5-3696</b>	510
108"	<b>4CS4R5-24108</b>	495	<b>4CS4R5-30108</b>	510	<b>4CS4R5-36108</b>	550
120"	<b>4CS4R5-24120</b>	530	<b>4CS4R5-30120</b>	560	<b>4CS4R5-36120</b>	590
132"	<b>4CS4R5-24132</b>	565	<b>4CS4R5-30132</b>	603	<b>4CS4R5-36132</b>	633
144"	<b>4CS4R5-24144</b>	600	<b>4CS4R5-30144</b>	645	<b>4CS4R5-36144</b>	675

ALL DIMENSIONS ARE TYPICAL. TOLERANCE +/- .500". JOHN BOOS & CO. RESERVES THE RIGHT TO CHANGE SPECIFICATIONS WITHOUT NOTICE.