



Project _____

AIA # _____ SIS # _____

Item # _____ Quantity _____ C.S.I. Section 114000

R-Series

One Section Reach-In Wine Refrigerator Model
26" Deep, Glass Door, Self-Contained



STANDARD PRODUCT FEATURES

- Traulsen's Smart Control with LED Display
- Stainless Steel Exterior & Interior
- Adjustable for Different Wine Temperatures, Factory Preset at 53-57°F
- Full-Height Glass Door with Lock
- Self-Closing Door with Stay Open Feature at 120 Degrees
- Stainless Steel Vertical Door Handle
- Dome/Door LED Lights with ON/OFF Switch
- Stainless Steel Breaker Caps
- Maximum of 11 Wine Bottles Per Rack, Seven Racks Per Section
- Magnetic Snap-In EZ-Clean Door Gasket
- Stainless Steel One-Piece Louver Assembly
- 9' Cord & Plug Attached
- Set of (4) 6" High Adjustable Stainless Steel Legs

ACCESSORIES & OPTIONS

- Stainless Steel Finished Back with Rear Louvers
- Kool Klad Exterior Laminate Decor
- Set of (4) 4 1/8" or 6" High Casters in Lieu of Legs
- Other Support Options: 4 1/2" High Base or 6" High Kickplate (for use with standard legs)



Models listed to the applicable UL, CSA and NSF standards by an approved NRTL. Consult the factory or unit data plate for additional information.

AVAILABLE CONFIGURATIONS

R-Series Models

RH126W-WR01
RH126W-WR02

Door(s)

Full Height Glass (Hinged Left)
Full Height Glass (Hinged Right)

- GUARANTEED FOR LIFE CAM-LIFT HINGES

Approved by _____ Date _____ Approved by _____ Date _____

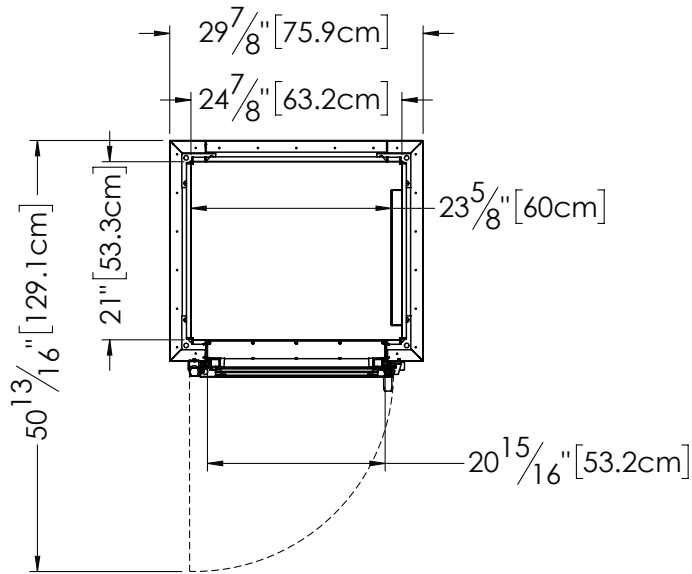


R-Series

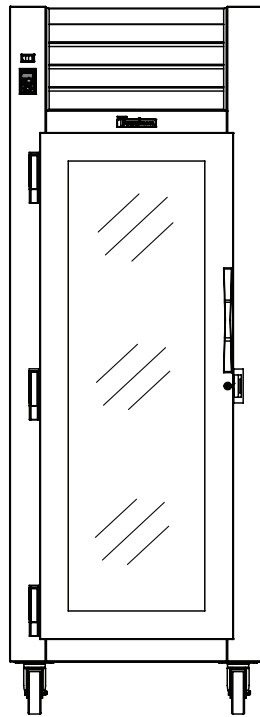
One Section Reach-In Wine Refrigerator Model
26" Deep, Glass Door, Self-Contained

MODEL

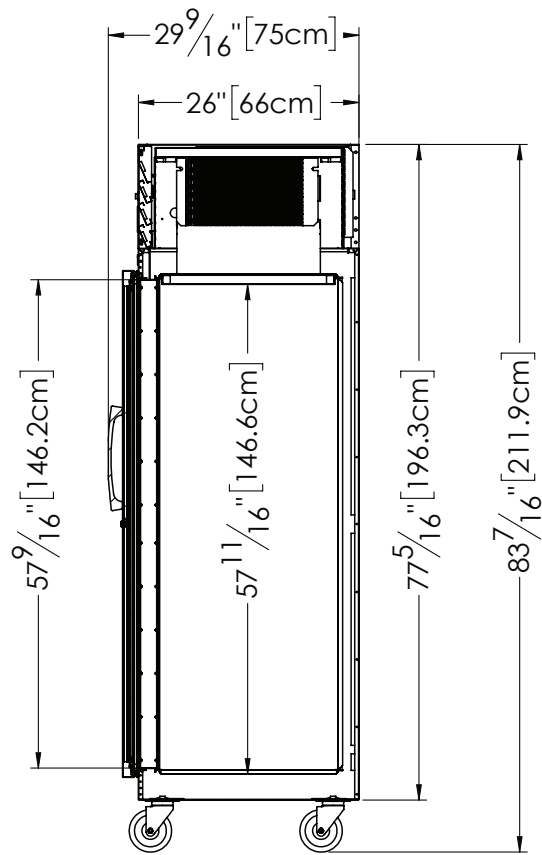
RH126W-WR01



TOP VIEW



ELEVATION



SIDE VIEW

➤ CAD and/or Revit Files Available

<https://traulsen.klccad.com/>

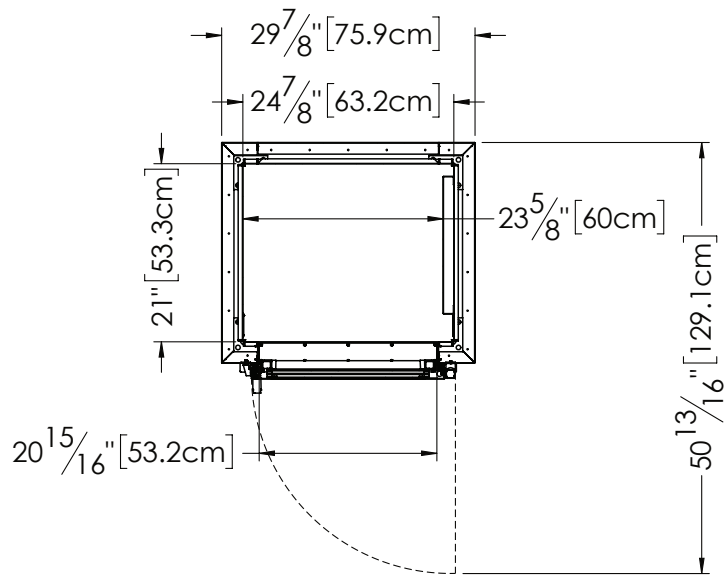


R-Series

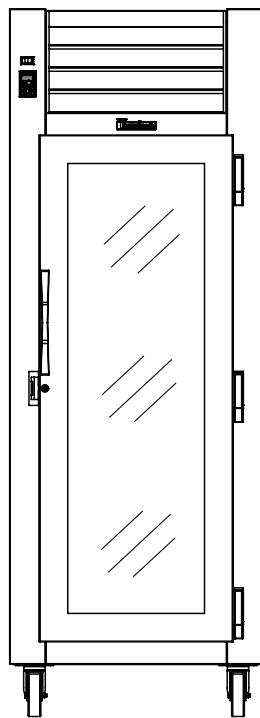
One Section Reach-In Wine Refrigerator Model
26" Deep, Glass Door, Self-Contained

MODEL

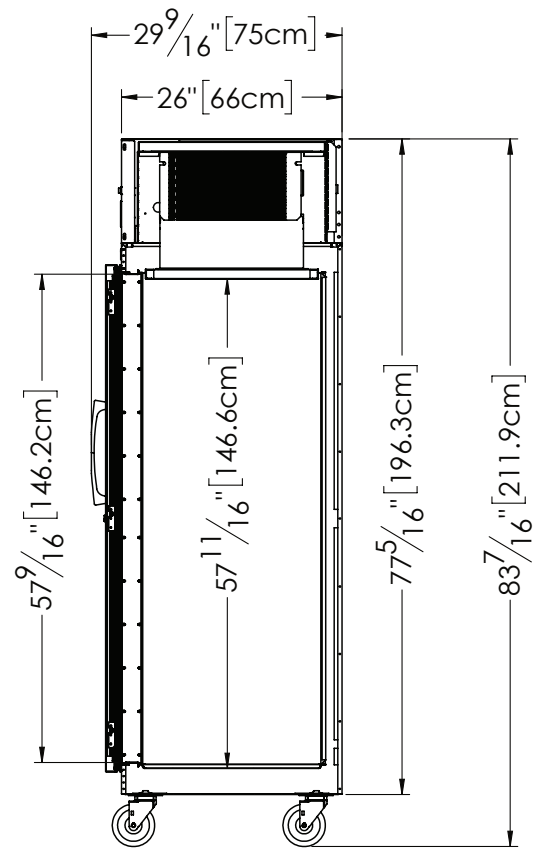
RH126W-WR02



TOP VIEW



ELEVATION



SIDE VIEW

CAD and/or Revit Files Available

<https://traulsen.kclcad.com/>



R-Series

One Section Reach-In Wine Refrigerator Model 26" Deep, Glass Door, Self-Contained

MODEL


RH126W-WR01
RH126W-WR02

MODELS	RH126W
DIMENSIONAL DATA	
Net capacity cu. ft.	18.79 [532.1 cu l]
Length - overall in.	29 7/8" [75.9 cm]
Depth - overall in.	29 9/16" [75 cm]
Depth - over body in.	26" [66 cm]
Depth - door open 90° in.	50 13/16" [129.1 cm]
Clear door width in.	20 15/16" [53.2 cm]
Clear full-door height in.	57 9/16" [146.2 cm]
Height - overall on 6" legs ²	83 7/16" [211.9 cm]
Bottle Capacity Per Section ³	Up to 77
No. Standard Racks Per Section	7
ELECTRICAL DATA	
Voltage Plug	115/60/1 NEMA 5-15P
Full Load Amperes MDEC ⁴	9.2
REFRIGERATION DATA	
Refrigerant	R-450A
Refrigerant Charge Amount oz.	14 [396.9 g]
BTU/HR H.P. ¹	2220 1/3 HP
SHIPPING DATA	
Length - Crated in.	48" [121.9 cm]
Width - Crated in.	42" [106.7 cm]
Height - Crated in.	85" [215.9 cm]
Volume - Crated cu. ft.	99 [2803.4 cu l]
Weight - Crated lbs.	432 [196 kg]

NOTES: Figures in parentheses reflect metric equivalents.

1. Based on 90°F ambient and 20°F evaporator.
2. 12" top clearance preferred for optimum performance & service access.
3. Actual capacity may vary depending upon bottle dimensions.
4. MDEC = Maximum Daily Energy Consumption

When ordering please specify: Voltage, Hinging, and Options

Equipped with one NEMA 5-15P Plug 

EQUIPMENT SPECIFICATIONS

CONSTRUCTION, HARDWARE, INSULATION

The cabinet interior, exterior front, one piece sides & louver assembly are made from heavy-gauge stainless steel. The exterior top & bottom are made from heavy-gauge galvanized steel. Included is a set of four adjustable 6" stainless steel legs.

Doors have removable plug cylinder locks & guaranteed for life gravity action, self-closing glide hinges that stay open at 120 degrees. An external switch is included to activate interior LED lighting. The gasket design simplifies cleaning & enhances longevity. Anti-condensate heaters are located behind the door opening. The unit has seamless, polished metal corners & vertical stainless steel handles. The cabinet is insulated with high density, non-CFC, foamed in place polyurethane.

SELF-CONTAINED REFRIGERATION SYSTEM

The unit uses a top-mounted, balanced system located behind the one piece louver assembly. The R450A refrigerant is environmentally friendly & non-flammable. It features a thermostatic expansion valve, air-cooled hermetic compressor, plenum effect blower coil, large, high humidity evaporator coil outside the food zone & a top-mounted non-electric condensate evaporator. Standard operating temperatures are 53-57°F, adjustable for different wine temperatures. A 9' cord and plug are provided.

CONTROL

Traulsen's Smart Control features advanced control algorithms & sophisticated diagnostic capabilities to optimize performance. Utilizing Smart Sensors, it adapts the operation of the refrigeration system to a variety of environments & usage patterns. The Smart Control also offers a complete set of visual alarms designed to alert the user to critical events such as power outages or a prolonged door opening. In the event of an alarm, a dedicated Alarm LED will illuminate, informing the user of the critical event and duration.

INTERIOR

Standard interior arrangements include seven (7) wine racks per section, bottle capacity is 11 maximum wine bottles per rack.³

WARRANTY

Both a six year parts & labor warranty and a seven year compressor warranty (self-contained models only) are provided standard.

CONTINUED PRODUCT DEVELOPMENT MAY NECESSITATE SPECIFICATION CHANGES WITHOUT NOTICE.