



FAST-TRAK®

Walk-In Coolers & Freezers

Easy installation with the flexibility of additional options.

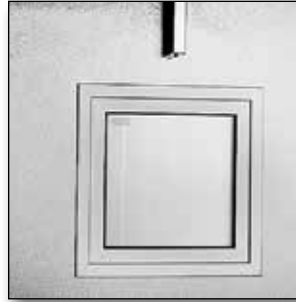


Features

- Available in widths of: 6', 7' & 8'
- Unlimited lengths in 1' increments
- Heights: 7'7" & 8'7" with floor, 7'4" & 8'4" floorless
- Indoor or outdoor models
- Coolers, freezers or combination cooler/freezers
- Fast and easy installation
- Exterior finish is corrosion resistant stucco embossed coated steel
- Full 4" panel foamed-in-place with HFC free HFO polyurethane insulation
- 30" or 36" self-closing door
- Digital thermometer and light switch
- Adjustable spring loaded hinge
- Spring actuated door closer
- Deadbolt locking handle for security
- Refrigeration system choices include remote Split-Pak™ systems, self-contained Capsule Pak™ and indoor Capsule Pak ECO™ (self-contained systems available on single compartment walk-ins under 14' in length)
- Temperatures: +38°F, +37°F, -10°F
- 15 year panel warranty

Options

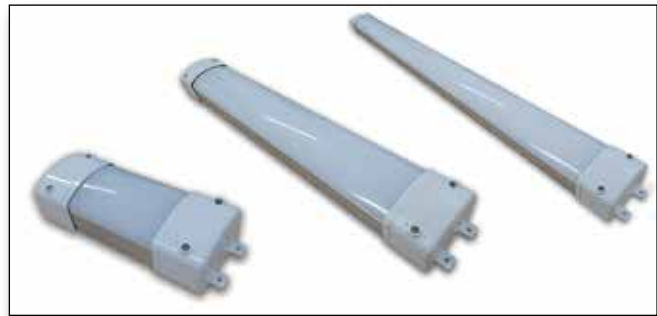
- 9', 10', 11' & 12' width*
- Aluminum diamond tread or stainless steel interior and exterior kickplates
- With floor/less floor combination*
- Exterior ramp (with floor models)
- Interior ramp*
- Non-skid strips (shipped loose)
- Extra vapor-proof lights (shipped loose)
- Additional LED lighting
- Outdoor membrane roof systems
- Viewports (freezer ports heated)
- Strip curtains (shipped loose)
- Door rain hoods
- Indoor remote refrigeration system
- Specially designed shelving kits
 - Flexible shelf adjustment in 1" increments
 - Shelving layouts utilize maximum space for storage leaving the door opening clear of end standards
 - Green Kote™ special epoxy-coated finish provides extra protection from acidic foods
 - Quick and easy assembly
 - Rigid construction
 - Optional U-shaped systems



Viewports allow visibility of products stored inside.



Interior ramps* make it easy to roll items directly into your walk-in.



Highly efficient LED lighting options fully illuminate your walk-in.

*Consult factory for lead time on this option.

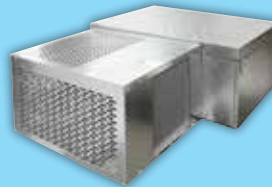
REFRIGERATION SYSTEM OPTIONS



CAPSULE PAK™*
SELF-CONTAINED
INDOOR & OUTDOOR



CAPSULE PAK™*
REMOTE
INDOOR & OUTDOOR
Quick-connect systems up to 2 HP



CAPSULE PAK ECO™*
SELF-CONTAINED
INDOOR ONLY



SPLIT-PAK™**
REMOTE
INDOOR & OUTDOOR
Systems ranging from .5 to 6 HP



* Capsule Pak, Capsule Pak Remote and Capsule Pak ECO systems are intended for single compartments 14' long and under.

**Dedicated medium temp condensing units meet the DOE requirement of a minimum AWEF rating of 5.61 (Btu/W-h) for indoor models and 7.6 for outdoor models.



891 County Road U • Hudson, WI 54016
800-955-5253 • www.norlake.com



Revision Date: 2/23
Part Number: 101625



All specifications within this publication subject to change without notice. ©2023 Norlake, Inc. All rights reserved.