

# ASSEMBLY INSTRUCTIONS FOR JANITOR CART

PRODUCT NUMBERS: JC1945S, JC1945L

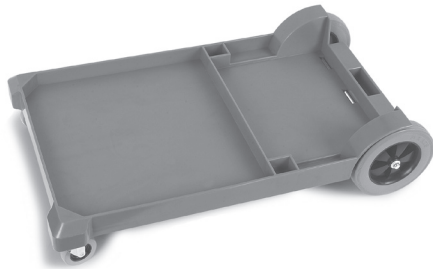
## PARTS:

- (1) Base Assembly with Wheels & Casters
- (2) Side Upright
- (1) Back Upright
- (1) Middle Utility Shelf
- (1) Top Utility Shelf
- (1) Handle
- (1) Trash Bag
- (10) 1" Bolt
- (3) 1-1/2" Bolt
- (2) Bolt Cap (blue)

## TOOLS:

- 3/16" Hex Wrench (included)
- Rubber Mallet

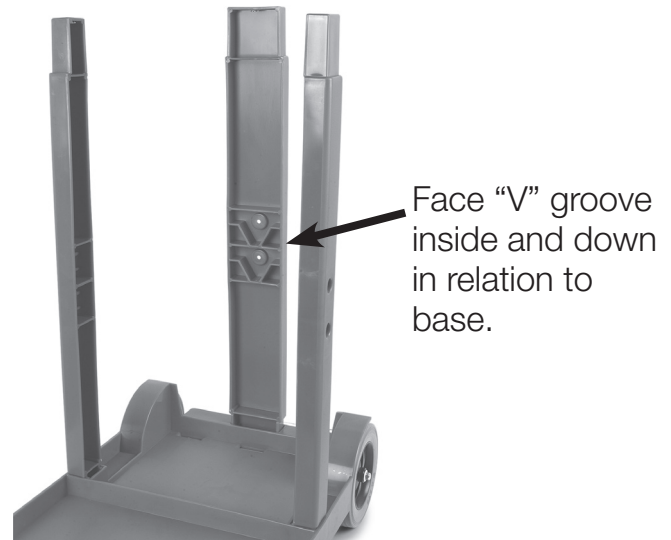
1. Place base assembly upright on a firm even surface.



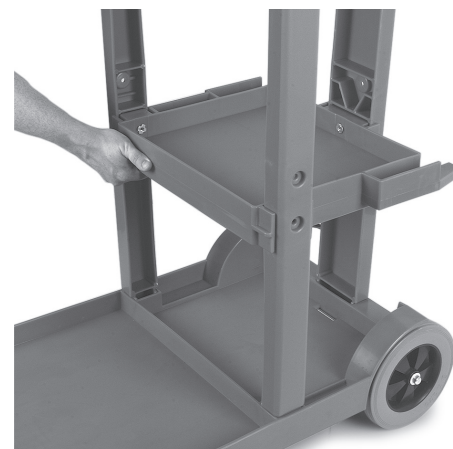
2. Insert the short end of the two side upright into slots on the base as shown and tap into place with mallet.



3. Insert the short end of the back upright into slot as shown and tap into place.



4. Slide middle utility shelf onto uprights as shown. Choose either high or low position and slide post on each side of shelf into corresponding slot on each upright. Tap into place with the mallet.

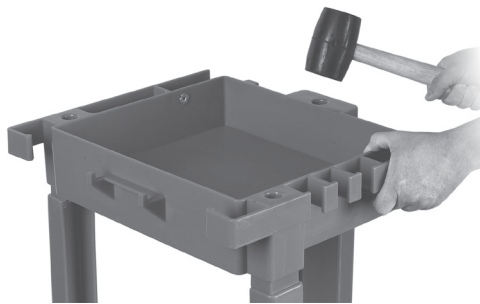


© 2013 Carlisle FoodService Products  
Oklahoma City, OK 73131  
www.carlislefsp.com | 800-654-8210

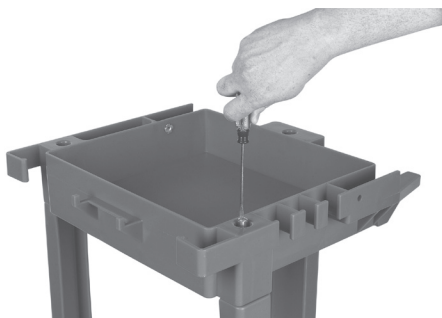
5. Use three 1-1/2" bolts inserted from outside to lock shelf in place.



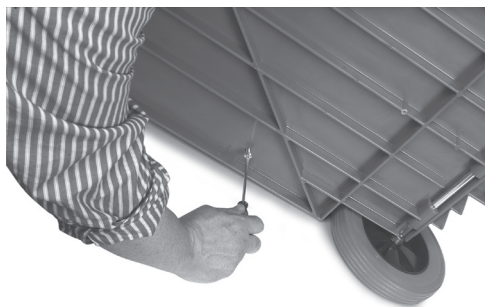
6. Place top shelf onto upright ends and tap into place.



7. Use three 1" bolts inserted from top to lock shelf into place.



8. Turn cart on side and secure uprights to base using three 1" bolts.



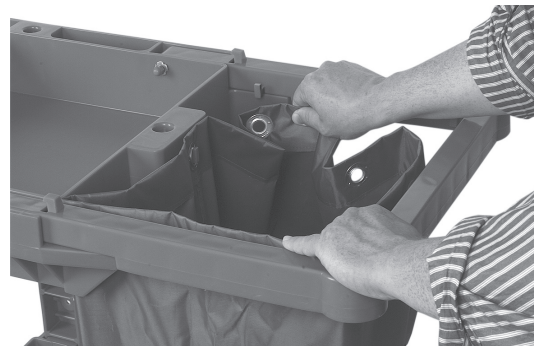
9. Place "U" Shaped bag rack into slots and use two 1" bolts from each side to lock into place.



10. Place bolt caps on ends of bolts.



11. Place bag onto hooks inside "U" shaped frame.



© 2013 Carlisle FoodService Products  
Oklahoma City, OK 73131  
www.carlislefsp.com | 800-654-8210