

Project \_\_\_\_\_  
 Item \_\_\_\_\_  
 Quantity \_\_\_\_\_  
 FCSI Section 11400 \_\_\_\_\_  
 Approved \_\_\_\_\_  
 Date \_\_\_\_\_

## ELECTRIC CHAIN HOIST

### Models

- CH-E-1005-M
- CH-H-101-M
- CH-R-102-M



### Standard Features

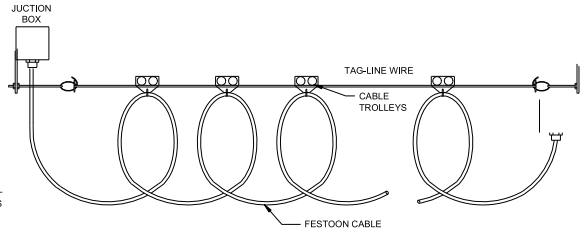
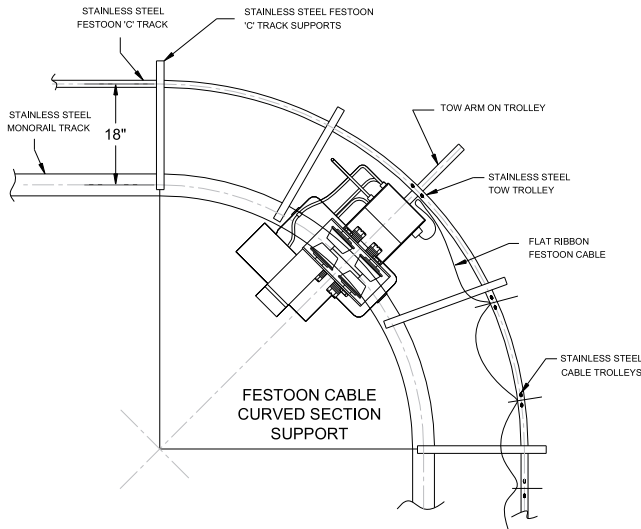
- 1/2, 1, & 2 ton capacity Chain Hoist
- 8 feet per minute Hoist lifting speed
- Motor driven, low head room trolley with four special crown tread wheels
- Heavy-duty Hoist motor with multiple disc brake
- Overload Protection automatically stops the lift when overload is being sensed
- Lifetime lubricated gears which require no oil in the transmission
- Impact resistant Control Station with snap action contacts for positive control
- Internal cable strain relief for Control Station
- Complete with lifting Chain, bottom Hook, Safety Lock and Chain Container
- Stainless steel Rail with End-Stops
- Accepted for use in U.S.D.A. Inspected Facilities

### Short Form Specifications

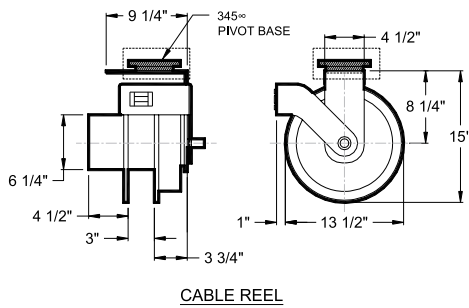
Shall be CLEVELAND Model CH- \_\_\_\_\_, Electric CHAIN HOIST and MONORAIL SYSTEM. \_\_\_\_ ton capacity, motor driven Trolley with special crown tread wheels, 8 feet per minute lifting speed, overload protection, disk brakes, lifetime lubricated gears, impact resistant Control Station, lifting Chain with safety-lock hook and chain container.

### Options & Accessories

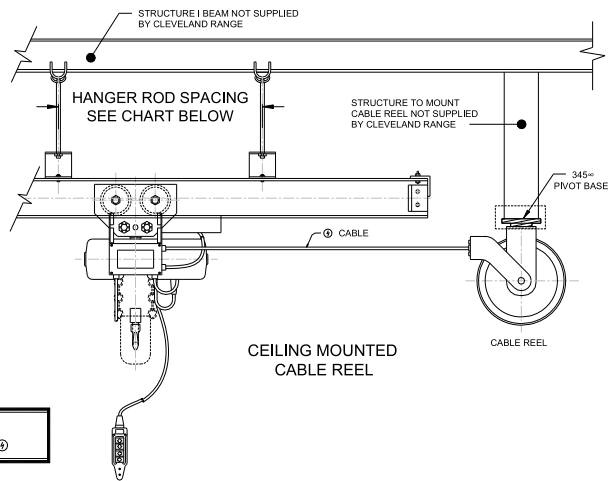
- Hanger Rods (specify length)
- Rail Hanger Brackets
- Universal Beam Clamps
- Remote Control System
- Curved sections
- Rail Coupling to support Rail at joint
- Automatic Cord Reel
- Festooned stainless steel cable for power cord
- Stainless steel chain (1/2 and 1 ton only)
- Stainless steel bottom hook
- Stainless steel chain container
- Stainless steel chain hook (1/2 and 1 ton only)



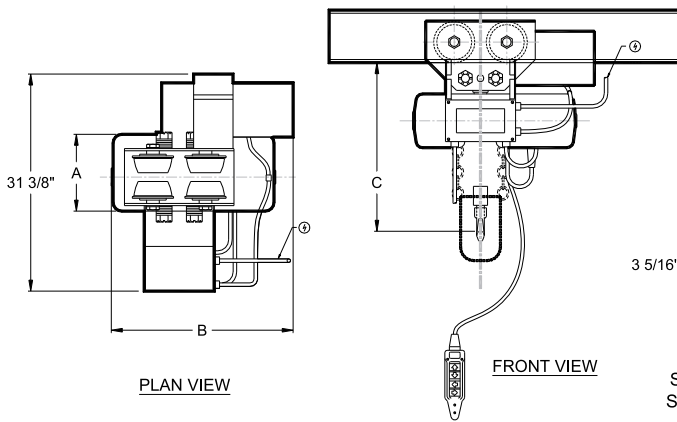
**STRAIGHT LINE FESTOON CABLE SUPPORT**



**CABLE REEL**



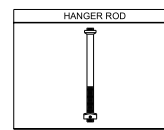
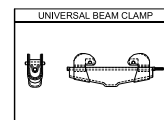
**CEILING MOUNTED CABLE REEL**



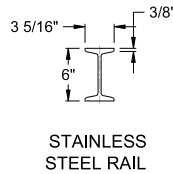
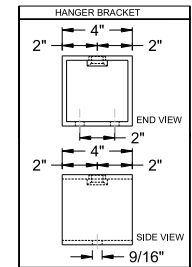
**PLAN VIEW**

**FRONT VIEW**

**CLAMP AND HANGER ROD**



**HANGER BRACKET FOR STAINLESS STEEL RAIL**



**STAINLESS STEEL RAIL**

**MOTORIZED HOIST**

| MODEL       | DIMENSIONS |           |           | CAPACITY TONS | ELECTRIC 208V-3PH AMPS | ROD SPACING STAINLESS STEEL RAIL |
|-------------|------------|-----------|-----------|---------------|------------------------|----------------------------------|
|             | A          | B         | C         |               |                        |                                  |
| CH-E-1005-M | 8 3/4"     | 18 3/4"   | 18 1/8"   | 1/2           | 4.9                    | 10'-0"                           |
| CH-H-101-M  | 8 3/4"     | 18 3/4"   | 18 1/2"   | 1             | 6.1                    | 10'-0"                           |
| CH-R-102-M  | 12 11/16"  | 20 13/16" | 21 15/16" | 2             | 9.3                    | 5'-0"                            |

Cleveland Range reserves right of design improvement or modification, as warranted.

(NOT TO SCALE)