



Profit from the Eagle Advantage®

Specification Sheet

Short Form Specifications

Eagle Clean Dishtables, model _____. Top to be 16/430, 16/304, or 14/304 stainless steel, with all seams welded, ground smooth, and polished. Front and ends to have 3"-high upturn with 1/2"-diameter rolled edge. Galvanized hat channels welded to underside. Backsplash is 8"-high. 20 1/2" standard opening for dishwasher. Legs to be 1 5/8" O.D. galvanized tubing, 1" diameter crossbracing and adjustable bullet feet (14/304 models come standard with stainless steel hat channels welded to underside of table, stainless steel crossbraced legs, and adjustable metal feet).



right-hand model

Options / Accessories *

- Undershef
- Stainless steel legs
- Stainless steel gussets
- Stainless steel feet

* See Spec Sheets EG50.07A and EG50.07B for full line of options and accessories.

EAGLE GROUP

100 Industrial Boulevard, Clayton, DE 19938-8903 USA
 Phone: 302-653-3000 • 800-441-8440 • Fax: 302-653-2065
www.eaglegrp.com
www.eaglegrpnews.com
www.eaglemhc.com

For custom configuration or fabrication needs, contact our **SpecFAB® Division**.
 Phone: 302-653-3000 • Fax: 302-653-2065 • e-mail: quotes@eaglegrp.com

Item No.: _____
 Project No.: _____
 S.I.S. No.: _____

Clean Dishtables— Island Design

MODELS:

- | | | |
|---|---|--|
| <input type="checkbox"/> CDTCIL-48-16/4 | <input type="checkbox"/> CDTCIL-72-16/4 | <input type="checkbox"/> CDTCIL-108-16/4 |
| <input type="checkbox"/> CDTCIL-48-16/3 | <input type="checkbox"/> CDTCIL-72-16/3 | <input type="checkbox"/> CDTCIL-108-16/3 |
| <input type="checkbox"/> CDTCIL-48-14/3 | <input type="checkbox"/> CDTCIL-72-14/3 | <input type="checkbox"/> CDTCIL-108-14/3 |
| <input type="checkbox"/> CDTCIR-48-16/4 | <input type="checkbox"/> CDTCIR-72-16/4 | <input type="checkbox"/> CDTCIR-108-16/4 |
| <input type="checkbox"/> CDTCIL-48-16/3 | <input type="checkbox"/> CDTCIR-72-16/3 | <input type="checkbox"/> CDTCIR-108-16/3 |
| <input type="checkbox"/> CDTCIL-48-14/3 | <input type="checkbox"/> CDTCIR-72-14/3 | <input type="checkbox"/> CDTCIR-108-14/3 |
| <input type="checkbox"/> CDTCIL-60-16/4 | <input type="checkbox"/> CDTCIL-96-16/4 | <input type="checkbox"/> CDTCIL-120-16/4 |
| <input type="checkbox"/> CDTCIL-60-16/3 | <input type="checkbox"/> CDTCIL-96-16/3 | <input type="checkbox"/> CDTCIL-120-16/3 |
| <input type="checkbox"/> CDTCIL-60-14/3 | <input type="checkbox"/> CDTCIL-96-14/3 | <input type="checkbox"/> CDTCIL-120-14/3 |
| <input type="checkbox"/> CDTCIR-60-16/4 | <input type="checkbox"/> CDTCIR-96-16/4 | <input type="checkbox"/> CDTCIR-120-16/4 |
| <input type="checkbox"/> CDTCIR-60-16/3 | <input type="checkbox"/> CDTCIR-96-16/3 | <input type="checkbox"/> CDTCIR-120-16/3 |
| <input type="checkbox"/> CDTCIR-60-14/3 | <input type="checkbox"/> CDTCIR-96-14/3 | <input type="checkbox"/> CDTCIR-120-14/3 |

Design and Construction Features

- Corner design, left or right operation.
- 14 or 16 gauge stainless steel.
- Polished stainless steel worksurface.
- 30" (762mm)-wide table furnished in lengths ranging from 48" to 120" (1219 to 3048mm).
- 1 1/2" (38mm) raised rolled rim on front and end.
- 1 5/8" (41mm)-diameter galvanized legs with welded 1" (25mm)-diameter crossbracing.
- 8" (203mm)-high backsplash.
- Table has lip to fit most standard dishwashers.
- Adjustable non-marking bullet feet with up to 1" (25mm) adjustment.
- All Spec-Master® 14 gauge type 304 dishtables come standard with stainless steel crossbraced legs and gussets, complete with metal feet.

Certifications / Approvals

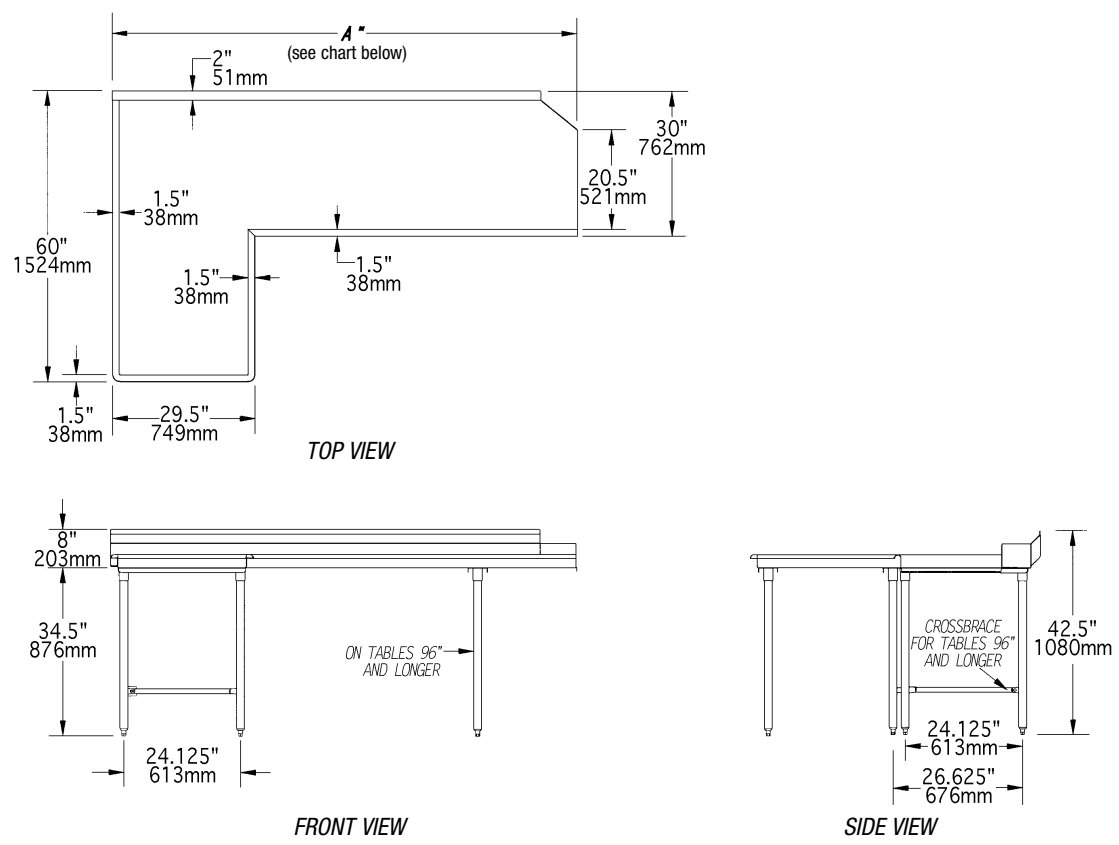
AQ AutoQuotes

Spec sheets available for viewing, printing or downloading from our online literature library at our websites



Item No.: _____
 Project No.: _____
 S.I.S. No.: _____

Clean Dishtables—Island Design



16 gauge type 430 model #	16 gauge type 304 model #	Spec-Master® 14 gauge type 304 model #		length (Dimension A)		weight	
			description	in.	mm	lbs.	kg
CDTCIL-48-16/4	CDTCIL-48-16/3	CDTCIL-48-14/3	left-hand model	48"	1219	118	53.5
CDTCIR-48-16/4	CDTCIR-48-16/3	CDTCIR-48-14/3	right-hand model	48"	1219	118	53.5
CDTCIL-60-16/4	CDTCIL-60-16/3	CDTCIL-60-14/3	left-hand model	60"	1524	128	58.1
CDTCIR-60-16/4	CDTCIR-60-16/3	CDTCIR-60-14/3	right-hand model	60"	1524	128	58.1
CDTCIL-72-16/4	CDTCIL-72-16/3	CDTCIL-72-14/3	left-hand model	72"	1829	138	62.6
CDTCIR-72-16/4	CDTCIR-72-16/3	CDTCIR-72-14/3	right-hand model	72"	1829	138	62.6
CDTCIL-96-16/4	CDTCIL-96-16/3	CDTCIL-96-14/3	left-hand model	96"	2438	157	71.2
CDTCIR-96-16/4	CDTCIR-96-16/3	CDTCIR-96-14/3	right-hand model	96"	2438	157	71.2
CDTCIL-108-16/4	CDTCIL-108-16/3	CDTCIL-108-14/3	left-hand model	108"	2743	172	78.0
CDTCIR-108-16/4	CDTCIR-108-16/3	CDTCIR-108-14/3	right-hand model	108"	2743	172	78.0
CDTCIL-120-16/4	CDTCIL-120-16/3	CDTCIL-120-14/3	left-hand model	120"	3048	231	104.8
CDTCIR-120-16/4	CDTCIR-120-16/3	CDTCIR-120-14/3	right-hand model	120"	3048	305	138.4

EAGLE GROUP
 100 Industrial Boulevard, Clayton, DE 19938-8903 USA
 Phone: 302-653-3000 or 800-441-8440 • Fax: 302-653-2065
 www.eaglegrp.com • www.eaglegrpnews.com • www.eaglehmc.com

Printed in U.S.A.
 ©2022 by Eagle Group
 Rev. 12/22

Spec sheets available for viewing, printing or downloading from our online literature library at our websites

Although every attempt has been made to ensure the accuracy of the information provided, we cannot be held responsible for typographical or printing errors. Information and specifications are subject to change without notice. Please confirm at time of order.