



Your Solutions Partner

Specifications

F.O.B. Sedalia, Missouri 65301



Model: ADI-4M-TC

OPTIONS:

- Remote compressor
- Stainless steel louvered grille
- Glass display shelves - 98x Series
- Buffet shelves - 83x, 93xFL, 93xHT, 93xBL
- Serving shelves - 956/956-460 - x Series

Certifications




DUKE MANUFACTURING CO.

2305 N. Broadway
 St. Louis, MO 63102
 800.735.3853 Toll Free
 314.231.5074 Fax
 www.dukemfg.com

SS-1094 ADI-Tri Channel Mechanically Cooled

Specification subject to change

 **WARNING** For CA residents: go to www.dukemfg.com/prop65 for prop 65 warning

Approval Stamp(s):

PRODUCT INFORMATION:

PROJECT: _____

ITEM: _____

QUANTITY: _____

MODEL:

Drop-Ins - Cold Pan

TRI-Channel - NSF Standard 7

- ADI-1M-TC 18-1/8" length unit
- ADI-2M-TC 30-7/8" length unit
- ADI-3M-TC 43-5/8" length unit
- ADI-4M-TC 56-3/8" length unit
- ADI-5M-TC 69-1/8" length unit
- ADI-6M-TC 81-7/8" length unit

TOP RIM:

- Heavy gauge, 300 Series stainless steel
- Overhang on front, back and ends
- Reinforced rim
- Vinyl foam gasket as sealant
- 300 Series stainless steel liner
- Insulated all sides and bottom

REFRIGERATION:

- Copper coils attached to sides of liner - R448a refrigerant
- Open angle-iron suspended compressor compartment
- Remote mounted on/off switch with stainless steel face plate
- 120 volt unit
- 6' cord and plug
- Five year warranty on compressor motor

EXTERIOR HOUSING:

- Heavy gauge paint grip steel

DROP-INS - COLD PAN - TRI-CHANNEL - NSF STANDARD 7

Catalog No. ADI-TRIN7

A.I.A. File No. 35-C-13

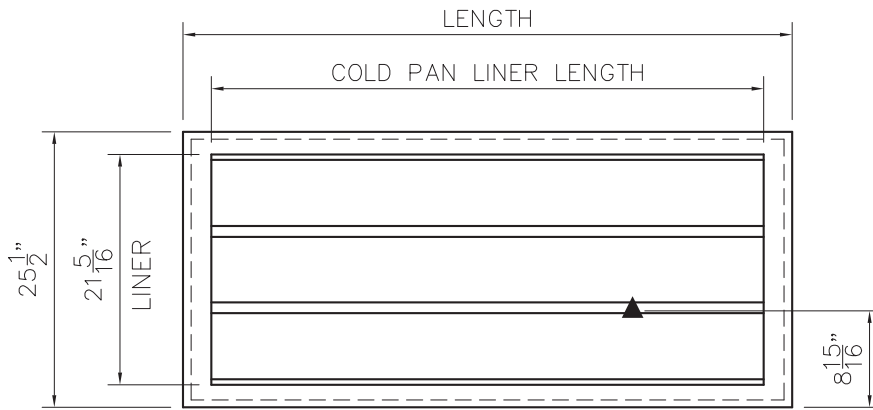
REV C 09/14/2020

TRI-Channel

A.I.A. File No. 35-C-13

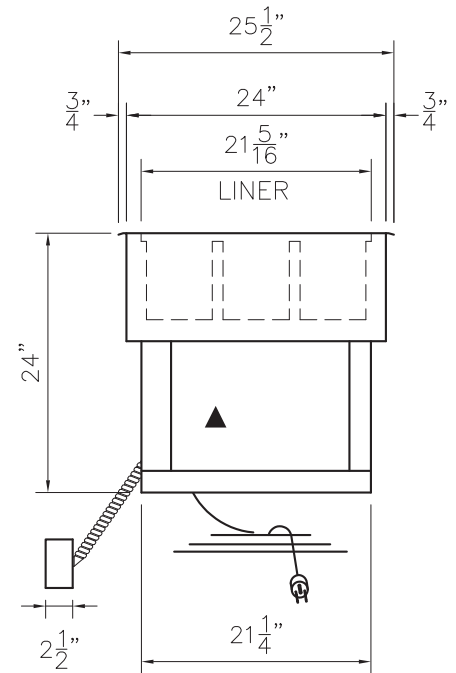
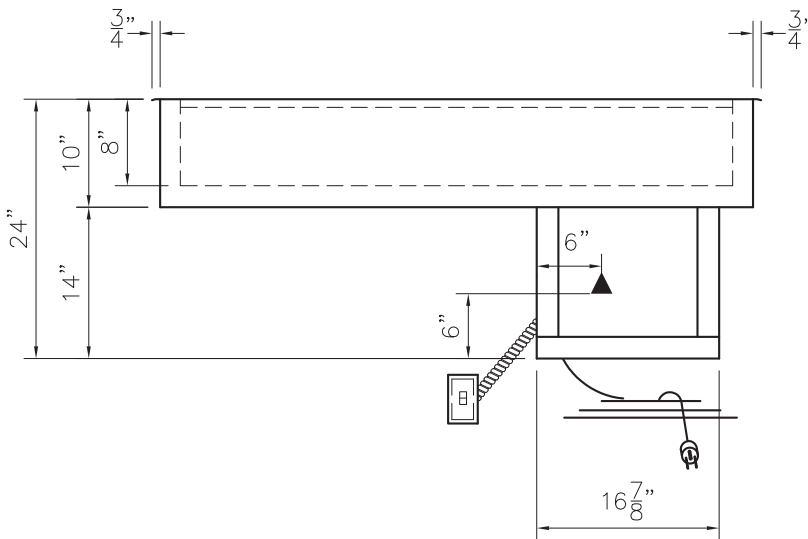
Catalog No. ADI-TRIN7

DROP-INS - COLD PAN - TRI-CHANNEL - NSF STANDARD 7



ADI-4M-TC UNIT SHOWN

TOP VIEW



ELECTRICAL SPECIFICATIONS:

DIMENSIONS:

Refrigerant R448a

Freight Class: 100

Model	120/1 NEMA #5-15P			Overall Length	Overall Width	TRI-Channel Top Cutout Dimensions		Cubic Ft. Crated	Weight	
	Watts	Amps	HP			Length	Width		lbs	Kg
ADI-1M-TC	600	5.0	.28	18.125	25.5	17.25	24.625	14.0	180	82
ADI-2M-TC	600	5.0	.28	30.875	25.5	30.00	24.625	22.1	190	86
ADI-3M-TC	530	4.4	.44	43.625	25.5	42.75	24.625	24.5	205	93
ADI-4M-TC	530	4.4	.44	56.375	25.5	55.50	24.625	38.4	310	141
ADI-5M-TC	960	8.0	.8	69.125	25.5	68.25	24.625	46.5	370	168
ADI-6M-TC	960	8.0	.8	81.875	25.5	81.00	24.625	54.6	410	186



Duke Manufacturing Co.
2305 N. Broadway
St. Louis, MO 63102

Phone: 314-231-1130
Toll Free: 1-800-735-3853
Fax: 314-231-5074

www.dukemfg.com

Printed in U.S.A.
© 2019, Duke Manufacturing Co.