

Slide Top Bottle Coolers

Refrigeration



BC48-SS

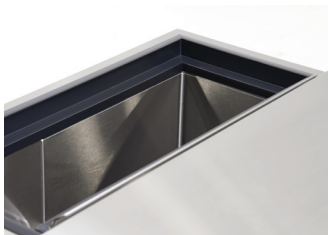
Standard Features

- 34" H x 24" depth (front to back)
- All Stainless Steel coved corner interior
- Digital thermostat
- Optional LED light kit available
- Heavy duty doors (with optional locks) & center bar construction
- Rugged grab bar handle
- Floor drain connects to condensate evaporator pan
- Removable evaporator drain pan
- Door tracks notched into side walls for added durability
- Removable side panel for easy access to compressor valves
- Pre-drilled bottom for optional casters (uses 1/4"-20 self tapping 1/2" L screw)
- R290 Hydrocarbon Refrigerant
- Eco-friendly Refrigerant and Insulation
- 5-Year Compressor Warranty
- 1-Year Parts & Labor Warranty

Optional Accessories

Model	Description
BC-100	Bright White LED Interior Light Kit
BC-130	2" Overall Casters (1" Wheels, Set of 4)
BC-131	2" Overall Casters (1" Wheels, Set of 6)
BC-132	3" Overall Casters (2" Wheels, Set of 4)
BC-133	3" Overall Casters (2" Wheels, Set of 6)
BC-134	4" Overall Casters (3" Wheels, Set of 4)
BC-135	4" Overall Casters (3" Wheels, Set of 6)
BC-136	5" Overall Casters (4" Wheels, Set of 4)
BC-137	5" Overall Casters (4" Wheels, Set of 6)
BC-138	6" Overall Casters (5" Wheels, Set of 4)
BC-139	6" Overall Casters (5" Wheels, Set of 6)
BC-111	Bottle Opener & Cap Catcher
BC-536	Additional Wire Partition
BC-619	Locks

NOTE: Casters raise height 1" higher than wheel size. Optional door locks BC-619 must be ordered with unit. Cannot be added later.



Integrated Durable Track System
Prevents collapsing seen on traditional overhanging track systems



Heavy Gauge Fully Insulated Doors
Stainless steel construction to withstand heavy loads resting on door.

Specifications

Electrical	<ul style="list-style-type: none"> ▪ 115 V, 1 Phase, 60 Hz ▪ Furnished with 8'-0" plug-in cord, which exits left rear of cooler ▪ NEMA 5-15P plug configuration ▪ Dedicated 15 amp circuit recommended
Refrigeration	<ul style="list-style-type: none"> ▪ R290 Hydrocarbon Refrigerant ▪ 30°F - 40°F operating range ▪ Digital thermostat on front grille
Plumbing	<ul style="list-style-type: none"> ▪ No drain required ▪ Condensate evaporator pan included
Insulation	<ul style="list-style-type: none"> ▪ 2" thick foamed-in-place polyurethane
Interior	<ul style="list-style-type: none"> ▪ 20 gauge stainless steel walls with coved corners ▪ Partitions: adjustable, chrome plated
Exterior	<ul style="list-style-type: none"> ▪ SS Models Front & Sides: 20 gauge stainless steel ▪ BG Models Front & Sides: 20 gauge black vinyl ▪ Back: 20 gauge galvanized steel
Doors	<ul style="list-style-type: none"> ▪ Heavy duty doors with rugged grab bar handle and optional locks

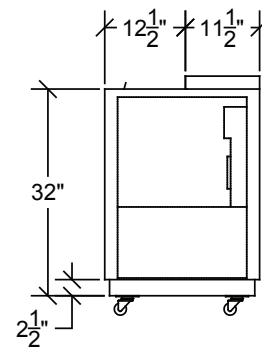
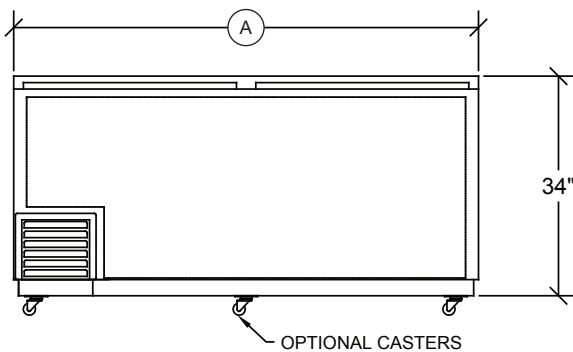
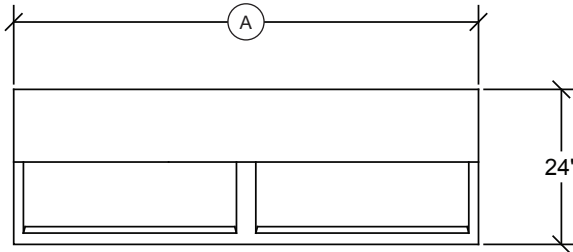


This equipment is intended for the storage and display of non-potentially hazardous bottle or canned products only.

This equipment is intended for use in an area where the ambient temperature typically does not exceed 75 °F.

Slide Top Bottle Coolers

Refrigeration



Model	Length Ⓐ	Height	Depth	Exterior	Doors	Case Capacity (12 oz. bottles)	Divider Racks	Weight	Amps	HP
BC24-SS	24"	34"	24"	Stainless Steel	1	6	1	185 lbs.	1.53	1/5
BC36-SS	36"	34"	24"	Stainless Steel	1	9.5	1	240 lbs.	1.53	1/5
BC48-SS	48"	34"	24"	Stainless Steel	2	15.5	2	295 lbs.	2.18	1/4
BC72-SS	72"	34"	24"	Stainless Steel	2	25.5	2	410 lbs.	2.53	1/4
BC96-SS	96"	34"	24"	Stainless Steel	3	37	3	455 lbs.	2.71	1/3
BC24-BG	24"	34"	24"	Black Vinyl	1	6	1	185 lbs.	1.53	1/5
BC36-BG	36"	34"	24"	Black Vinyl	1	9.5	1	240 lbs.	1.53	1/5
BC48-BG	48"	34"	24"	Black Vinyl	2	15.5	2	295 lbs.	2.18	1/4
BC72-BG	72"	34"	24"	Black Vinyl	2	25.5	2	410 lbs.	2.53	1/4
BC96-BG	96"	34"	24"	Black Vinyl	3	37	3	455 lbs.	2.71	1/3

Note: Optional casters raise height 1" higher than wheel size



This equipment is intended for the storage and display of non-potentially hazardous bottle or canned products only.

This equipment is intended for use in an area where the ambient temperature typically does not exceed 75 °F.