



TS SERIES TOP SHELF CORNER DRAINBOARDS
Inside Corner Drainboards



JOB	
AREA	
ITEM NO.	
MODEL NO.	

MODELS
TS90LIC
TS90RIC



TS90RIC



TS90LIC

KEY PRODUCT FEATURES AND BENEFITS

- Drainboard tops have drain lines indented towards the drain so water is evacuated quickly and effectively, with the matching insert you get a flat, level space to store your glassware.
- The default option of 'stadium' shaped perforated inserts enable great air flow for efficient glassware drying, maximize glass storage, and are designed to hold up to a busy bar environment abuse.
- Our new, more robust Perlick Quick Clamp leg attachment still features easy tool-less installation.
- All stainless construction with 18 gauge seamless stainless steel front apron for durability and cleanability.
- All Perlick drainboards are NSF-certified, so you can feel confident knowing your equipment will meet health code standards.

Additional Features:

- Optional Perlick Flex Mount leg relocation kit moves rear legs forward for additional space behind the equipment or moves forward legs rearward to help avoid pesky floor drains, available on TSF units.
- Stainless steel legs with adjustable thermoplastic feet install without tools, option on several units.



TS SERIES TOP SHELF CORNER DRAINBOARDS
Inside Corner Drainboards

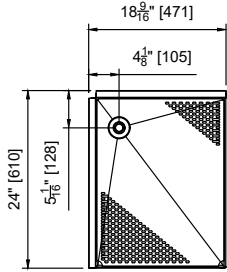
MODEL NUMBERS - TS90LIC, TS90RIC

MODEL NOS.		TS90LIC	TS90RIC
DIMENSIONS: EXTERIOR	Corner Angle Direction	90° Left Inside	90° Right Inside
	Width In. (mm)	24" (610)	24" (610)
	Depth In. (mm)	18-9/16" (471)	18-9/16" (471)
	Weight lbs. (kg)	50 lbs. (23)	50 lbs. (23)
MATERIALS	Construction	All stainless steel	
	Front & Back	Seamless 18 gauge stainless steel	
	Backsplash	6" or 4" high stainless steel with 1" return, fastened and sealed.	
	Drainboard	Pitched stainless steel drainboard top, All horizontal and vertical edges 1/4" radius with balled corners.	
	Legs	1-5/8" tubular, stainless steel with 1" adjustable thermoplastic foot.	
MECHANICALS	Plumbing	Drain location is left, back of drainboard (TS90LIC) or right, back of drainboard (TS90RIC), Drain connectino is 1-1/2" NPS male.	

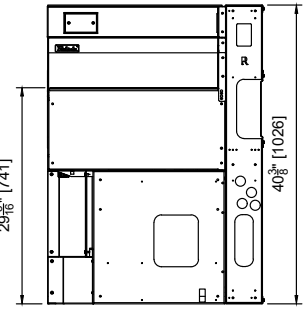
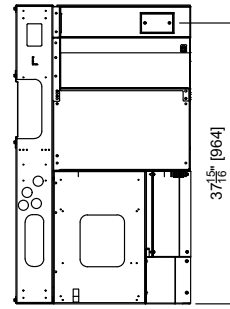
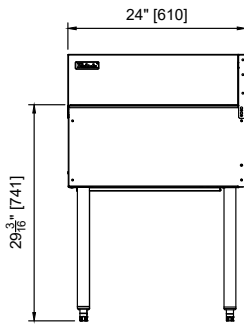
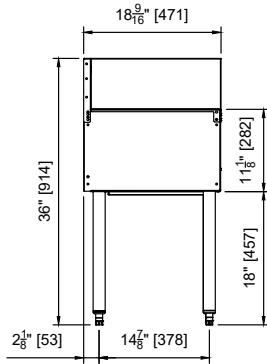
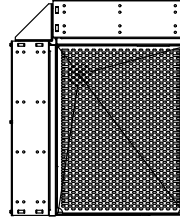


TS SERIES TOP SHELF CORNER DRAINBOARDS
Inside Corner Drainboards

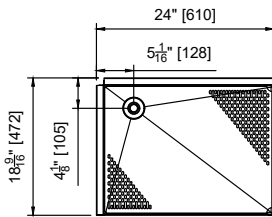
TS90LIC



*CUTOUT SHOWN FOR DRAIN REFERENCE



TS90RIC



*CUTOUT SHOWN FOR DRAIN REFERENCE

