



# BEVERAGE-AIR

|                 |      |
|-----------------|------|
| Project: _____  | AIA# |
| Item: _____     |      |
| Location: _____ | SIS# |
| Approved: _____ |      |

**BB78HC BACK BAR REFRIGERATOR: FOOD RATED**

## BAR EQUIPMENT- BACK BAR REFRIGERATOR

**MODEL:  
BB78HC-1-F-S**

BB78HC Solid Door Food Rated  
Hydrocarbon Series



**7 Year Parts/Labor Warranty  
7 Year Compressor Warranty**

### CABINET CONSTRUCTION

- Exterior is stainless steel front with continuous coil coated sides
- Stainless steel interior
- Full electronic control
- 1 ½" Stainless steel top
- Six (6) epoxy coated shelves
- Self-closing doors with 120° stay-open feature
- Field reversible doors (hinge kit not included)
- Door locks
- Magnetic door gaskets provide positive door sealing
- LED lighting
- Certified for open food product
- Compressor available on left or right, specify at time of unit order
- Balanced, forced air refrigeration system provides rapid chilling of product

### OPTIONS & ACCESSORIES

- Wine model (40°-60° models)
- Galvanized sub-top
- Wire shelf divider
- Additional shelves
- Additional shelf clips
- 3" or 6" Casters
- 6" Black legs
- Remote option\* (see note on back on page)

### REFRIGERATION SYSTEM

- Uses environmentally friendly, energy efficient R290 refrigerant, and meets all regulatory requirements for CARB, SNAP, DOE & more
- Adaptive defrost
- Epoxy coated evaporator coil
- Maintains product temperature between 36°F and 38°F



Please verify qualifying units by visiting:  
[www.energystar.gov/cfs](http://www.energystar.gov/cfs)

3779 Champion Blvd., Winston-Salem, NC 27105  
1-888-845-9800 Fax: 1-336-245-6453  
Beverage-Air.com Sales@bevair.com



# BEVERAGE-AIR

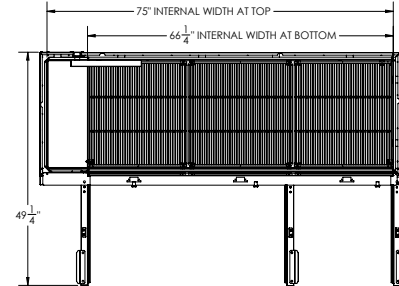
| MODEL                            | BB78HC-1-F-S        |
|----------------------------------|---------------------|
| <b>EXTERNAL DIMENSIONAL DATA</b> |                     |
| Width Overall (in)               | 79"                 |
| Depth Overall (in)               | 29 1/8"             |
| Height Overall (in)              | 37 1/4"             |
| Number of Doors                  | 3                   |
| Depth with Door Open 90° (in)    | 49 1/4"             |
| Door Openings (in)               | 19 7/8" x 30"       |
| <b>INTERNAL DIMENSIONAL DATA</b> |                     |
| NET Capacity (cubic ft.)         | 33.59               |
| Internal Width Useable (in)      | 66 1/4"             |
| Internal Depth Overall (in)      | 23"                 |
| Internal Height Overall (in)     | 32 1/8"             |
| Number of Shelves                | 6                   |
| Number of 1/2 Kegs               | 4                   |
| <b>ELECTRICAL DATA</b>           |                     |
| Full Load Amperes                | 5.5                 |
| <b>REFRIGERATION DATA</b>        |                     |
| Horsepower                       | 1/3                 |
| Capacity (BTU/Hr)                | 2392                |
| Heat Rejection (BTU/Hr)          | 3588                |
| Charge (lbs/grams/ounces)        | 0.2535 / 115 / 4.06 |
| <b>SHIPPING DATA</b>             |                     |
| Gross Weight - Crated            | 444 lbs             |
| Height - Crated                  | 44"                 |
| Width - Crated                   | 81"                 |
| Depth - Crated                   | 31"                 |

\*NOTE: Remote units are field wired and come with 6" legs.  
Refrigerant must be specified at time of order.

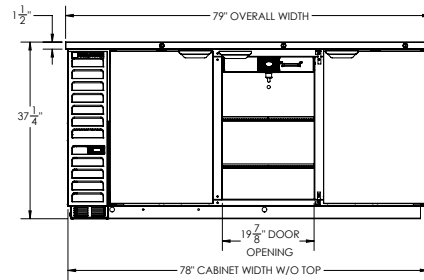
We reserve the right to change specifications and product design without notice. Such revisions do not entitle the buyer to corresponding changes, improvements, additions or replacements for previously purchased equipment. Dimensional tolerances +/- 1/4". Metric dimensions (MM).

## Bar Equipment-Back Bar Refrigerator Model: BB78HC-1-F-S

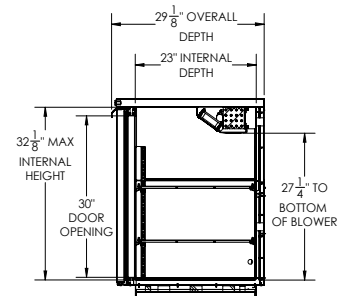
### Model Views



### PLAN VIEW



### ELEVATION VIEW



### SIDE VIEW



### ELECTRICAL CONNECTION

115/60/1  
NEMA 5-15P

Unit pre-wired at factory and include 8' long cord and plug set.