

# Sunset 36" Square ADA Dining Table

Height:	30.5"
Vertical Clearance:	29"
Horizontal Clearance:	30"
Clearance Under Table:	19"
Width:	36"
Length:	36"

## Product Specifications

Product Description	Reference Number	Color	UPC Code 014306	Weight Each (lbs.)	Master Pack	Master Pack Volume (cu. ft)
Sunset 36" Square ADA Dining Table	R1001599	Lava/Fusion Bronze	945903	59.52	1	6.27
	R1001288	Granite/Volcanic Black	945880	59.52	1	6.27

## Features & Benefits Warranty: 3 Yrs.

Ensure that all your customers have a comfortable, enjoyable experience with the Grosfillex Sunset ADA Compliant Complete Dining Table. Not only will it be a beautiful addition to your outdoor restaurant & patio dining floorplan, it complies with regulations established by the Americans with Disabilities Act. The table, with its satin-finished cast aluminum frame and HPL tabletop, come complete in one carton with all hardware and easy-to-read instructions so set-up is a breeze. The Sunset ADA Compliant Complete Dining Table is simple to maintain – just wipe with a cloth and mild soap when needed. Rust and UV resistant. Features leg levelers and an umbrella hole (with cap).

- HPL tabletop cleans up quickly and easily
- Ships complete in one carton
- Strong, sturdy design
- 3-year warranty
- Will not rust or get hot in the sun

### TOPS



Lava

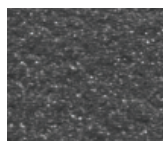


Granite

### BASES



Fusion Bronze



Volcanic Black

