



Special Features:

- ✓ Stainless Steel Undercounter Freezer
- ✓ 5.4 ft³ Storage Capacity
- ✓ Durable Stainless Steel Construction
- ✓ Single Self-Closing Door Remains Open at 90°
- ✓ Electronic Thermostat with Digital LED Temperature Display
- ✓ Eco-Conscious CFC-Free Refrigerant R290
- ✓ Temperature Maintenance Range -10°F to 10°F
- ✓ Adjustable Heavy-Duty Epoxy Coated Wire Shelves
- ✓ High-Quality Foam Insulation
- ✓ Magnetic Door Gasket (Replaceable Without Tools)
- ✓ Auto Defrost and Automatic Evaporation of Condensation Water
- ✓ 2.5" Lockable Front Casters for Mobility

Product Description:

The Empura E-KUC27F Undercounter Freezer is a compact, durable solution with a 5.4 ft³ storage capacity and stainless steel construction. Its single self-closing door stays open at 90° for easy access, while an electronic thermostat with a digital LED display maintains temperatures from -10°F to 10°F. Features include adjustable epoxy-coated shelves, auto defrost, eco-friendly R290 refrigerant, high-quality insulation, and lockable casters for mobility and safety.

About Empura Undercounter Refrigerators & Freezers:

The Empura E-KUC undercounter refrigerators and freezers are compact, reliable, and designed to optimize space in busy kitchens. With efficient cooling systems, adjustable shelves, and a user-friendly design, the E-KUC series provides consistent temperature control to keep your ingredients fresh and accessible. Perfect for restaurants, cafes, and bars, these undercounter units deliver performance and convenience in one sleek package.

Intended For Commercial Use Only. Empura assumes no liability for component failure, factory defects or any other damages for units installed in non-commercial foodservice or residential applications.



TECHNICAL SPECS

Dimensions

Overall Width	27.8"
Overall Depth	29.9"
Overall Height	35.5"
Interior Width	23"
Storage Capacity	5.4 ft ³
Right Door Opening Width	54.3"
Worktop Thickness	1.57"

Refrigeration

Refrigerant	R290
Temperature Range	-10°F-10°F
Compressor Horsepower	1/4 HP
CFC Free	Yes
Defrost Cycle	Automatic
BTU (LBP)	1160 Btu/h
Compressor Location	Back
Compressor Style	Reciprocating

Construction

Display / Control Type	Digital LED
Insulation	C5H10
Exterior Materials	Stainless Steel, AL Painted
Interior Materials	Stainless Steel
Shelves	Heavy-Duty Epoxy Coated Wire Shelves
Number of Doors	1
Door Type	Solid (Swing Door)
Door Hinge Location	Right
Number of Shelves	1
Installation	Freestanding
Individual Shelf Capacity	40 lbs

Electrical

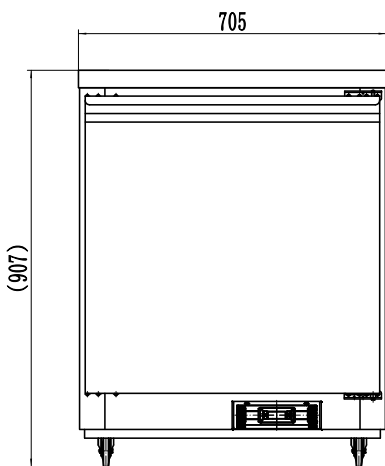
V / HZ / Ph	115V / 60Hz / 1Ph
Amps	1.9
Plug Type	NEMA-5-15P
Power Cord Length	110"

Shipping

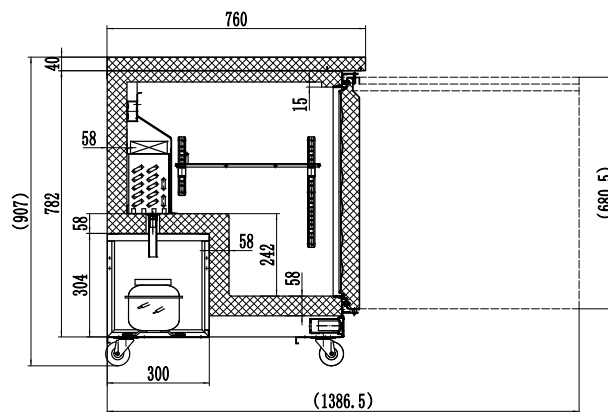
Ship Weight	210 lbs
-------------	---------

UNIT VIEW

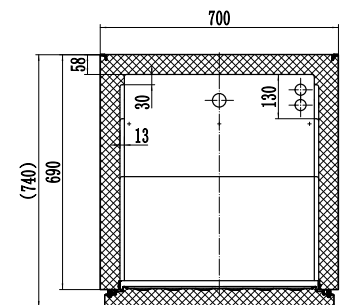
Front View



Side View



Top View



Attention CA Residents: This product can expose you to chemicals including lead, which are known to the State of California to cause cancer, birth defects, or other reproductive harm. For more information, go to www.p65warnings.ca.gov



NEMA 5-15P Plug:
This unit comes with a NEMA 5-15P plug