

"4CH6R1.5" MODULAR BASE WORK TABLES

16GA Stainless Steel Top w/1½" Rear Riser - Hinged Doors

FEATURES:

- 1-1/2" Rear Riser With 1-1/2" Stallion Edge On Front And 90 Degree Bend Down Side Edge For Table Line-Up
- Top Is Sound Deadened Reinforced With 2"x3" Channel Running Entire Length Of Top
- Stainless Steel Leg With Adjustable Feet
- Optional Fixed (Suffix "-1S") Or Adjustable (Suffix "-1AS") Intermediate Shelf Available
- 36" Working Height
- Shipped Standard Welded Set-Up

SPECIFICATIONS:

- Top: Stainless Steel Cabinet Tops TIG Welded, Exposed Welds Are Polished To Match Adjacent Surface #4 Polished, Satin Finish
- Removable Stainless Steel Legs
- Hinged Doors Are Constructed As Double Panel Doors
- Top: 16GA Type 300 Stainless Steel With #4 Polish, Satin Finish
- Body: 18GA Type 430 Stainless Steel
- Legs: Stainless Steel With Adjustable Feet



4CH6R1.5-3060

CERTIFICATIONS:

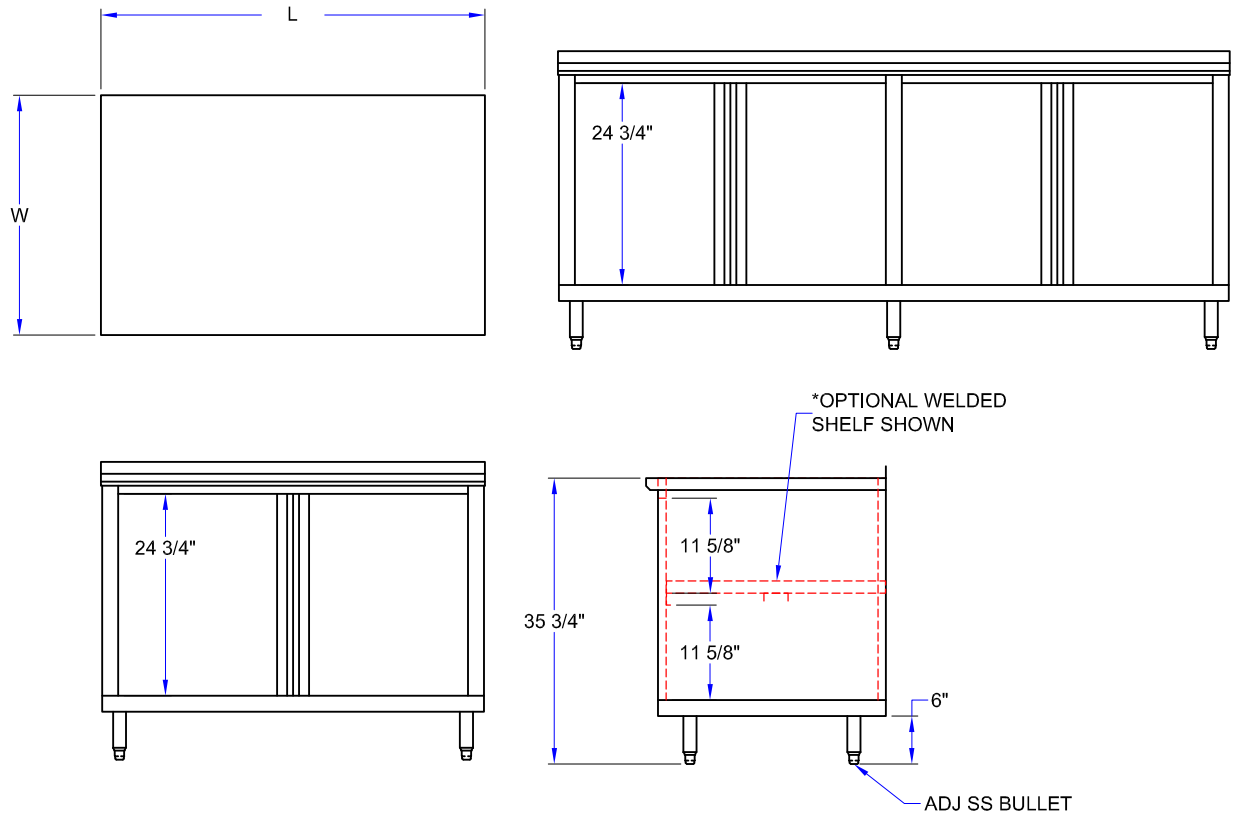


"4CH6R1.5" MODULAR BASE WORK TABLES

LENGTH	24" WIDE	WT (LBS)	30" WIDE	WT (LBS)	36" WIDE	WT (LBS)
36"	4CH6R1.5-2436	230	4CH6R1.5-3036	260	4CH6R1.5-3636	290
48"	4CH6R1.5-2448	270	4CH6R1.5-3048	295	4CH6R1.5-3648	330
60"	4CH6R1.5-2460	310	4CH6R1.5-3060	335	4CH6R1.5-3660	370
72"	4CH6R1.5-2472	355	4CH6R1.5-3072	375	4CH6R1.5-3672	415
84"	4CH6R1.5-2484	395	4CH6R1.5-3084	415	4CH6R1.5-3684	455
96"	4CH6R1.5-2496	445	4CH6R1.5-3096	460	4CH6R1.5-3696	500
108"	4CH6R1.5-24108	495	4CH6R1.5-30108	505	4CH6R1.5-36108	555
120"	4CH6R1.5-24120	535	4CH6R1.5-30120	550	4CH6R1.5-36120	615
132"	4CH6R1.5-24132	575	4CH6R1.5-30132	593	4CH6R1.5-36132	650
144"	4CH6R1.5-24144	615	4CH6R1.5-30144	635	4CH6R1.5-36144	685

ALL DIMENSIONS ARE TYPICAL. TOLERANCE +/- .500". JOHN BOOS & CO. RESERVES THE RIGHT TO CHANGE SPECIFICATIONS WITHOUT NOTICE.

DETAILED SPECIFICATIONS



MODEL # STRUCTURE

6 = 16GA Top
 CH = Hinged Doors
 4 = 430 S.S. Body

R1.5 = 1-1/2" Tall Riser
 24 = Width
 60 = Length

4CH6R1.5-2460

"4CH6R1.5" MODULAR BASE WORK TABLES

LENGTH	24" WIDE	WT (LBS)	30" WIDE	WT (LBS)	36" WIDE	WT (LBS)
36"	4CH6R1.5-2436	230	4CH6R1.5-3036	260	4CH6R1.5-3636	290
48"	4CH6R1.5-2448	270	4CH6R1.5-3048	295	4CH6R1.5-3648	330
60"	4CH6R1.5-2460	310	4CH6R1.5-3060	335	4CH6R1.5-3660	370
72"	4CH6R1.5-2472	355	4CH6R1.5-3072	375	4CH6R1.5-3672	415
84"	4CH6R1.5-2484	395	4CH6R1.5-3084	415	4CH6R1.5-3684	455
96"	4CH6R1.5-2496	445	4CH6R1.5-3096	460	4CH6R1.5-3696	500
108"	4CH6R1.5-24108	495	4CH6R1.5-30108	505	4CH6R1.5-36108	555
120"	4CH6R1.5-24120	535	4CH6R1.5-30120	550	4CH6R1.5-36120	615
132"	4CH6R1.5-24132	575	4CH6R1.5-30132	593	4CH6R1.5-36132	650
144"	4CH6R1.5-24144	615	4CH6R1.5-30144	635	4CH6R1.5-36144	685

ALL DIMENSIONS ARE TYPICAL. TOLERANCE +/- .500". JOHN BOOS & CO. RESERVES THE RIGHT TO CHANGE SPECIFICATIONS WITHOUT NOTICE.