

# Sparta® High-Heat Brushes

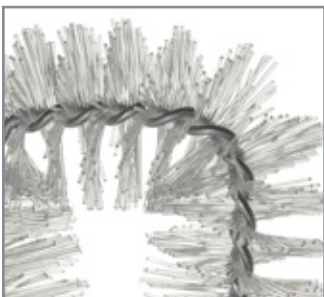


## The Right Brush Matters!

High-Heat Equipment Brushes help speed up the cleaning process so operators and their staff can get back to the business of meal prep. High temperature brushes save time and promote more frequent cleaning schedules since they can be used on hot equipment. The red handles make it easy to differentiate from other standard brushes.



## Benefits



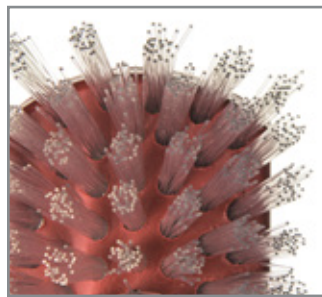
### Hot Cleaning

Ideal for maintaining fryers, vats or other hot equipment



### Safe Handling

Plastic handle stays cool to the touch



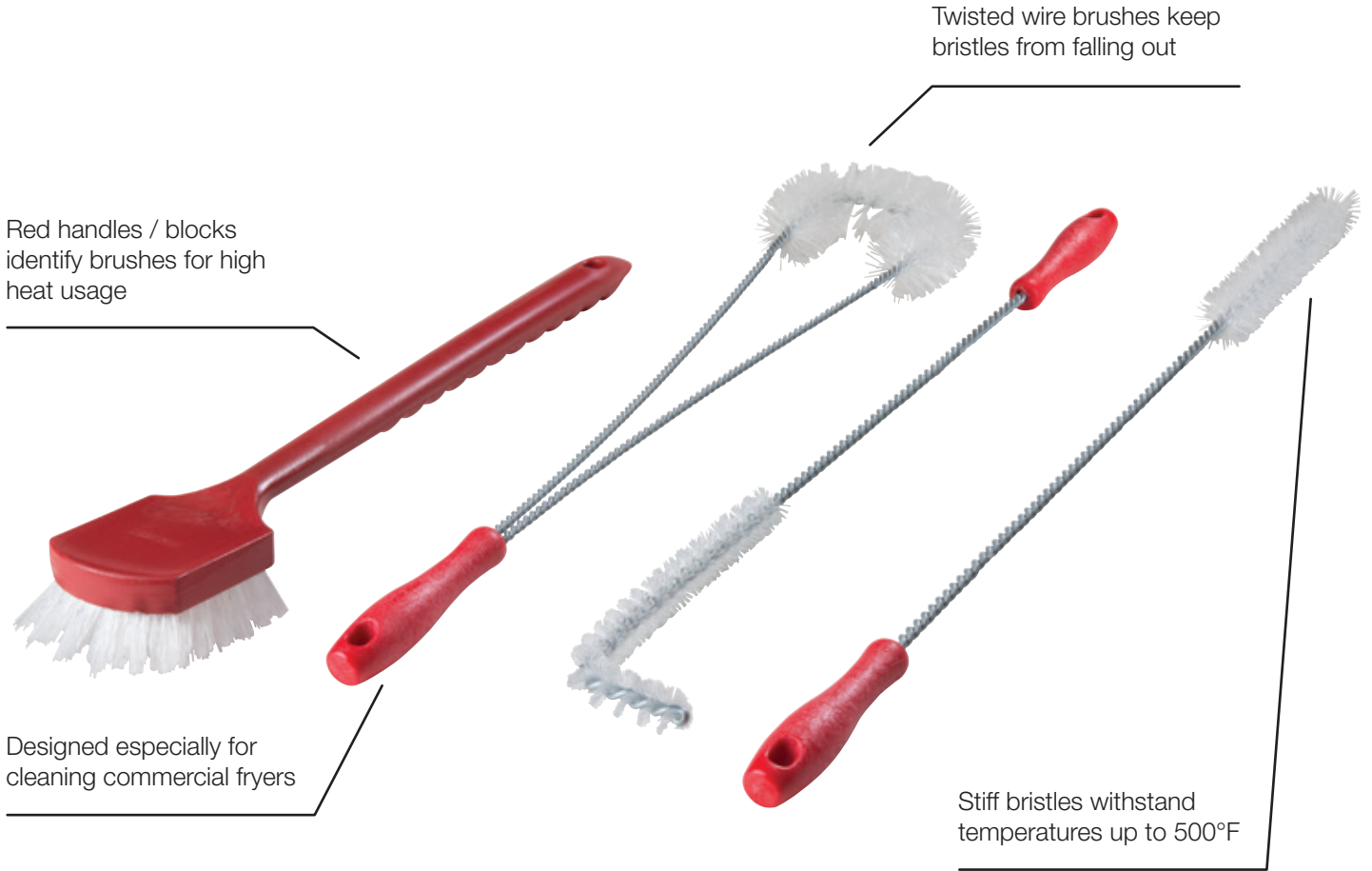
### Confident Cleaning

Stiff, durable bristles withstand temperatures up to 500°F



### Color Queues

Red handle features "HI-HEAT" imprint for easy identification



Prod No	Description	Color	Pack
<b>High-Heat Equipment Cleaning Brushes</b>			
40120	28" Straight Fryer Brush	05	1 ea
40121	23" L-Shaped Fryer Brush	05	1 ea
40122	24" Looped Fryer Brush	05	1 ea
40123	20" Utility Brush	05	1 ea