



Operating Instructions

Model:29801

Spring Driven Reel



Dimensions

	A	14 3/8"
	B	14"
	C	9 3/4"
	D	2 1/2"
	E	6 1/8"

SAFETY

1. Do not use reel at higher pressures or temperatures than listed on the back of this bulletin.
2. Remove all spring tension before beginning disassembly process.

INSTALLATION: A flexible hose connection must be used between the hose reel inlet and the source of supply to prevent possible misalignment and binding. Turn over the page for more detailed instructions and drawing configuration.

MOUNTING: This reel is configured to be wall mounted. The hose reel is equipped with a universal mounting bracket so that it can be mounted on the floor, wall or ceiling. In order to modify it's factory set position the hose guide arm can be moved to the position desired by removing the screws fastening the guide bracket to the reel base. Shift the guide arm bracket so the hose comes off the reel at the desired position and replace the screws. NOTE: For proper installation in wall mount applications, ensure reel is mounted with inlet on the right as you are facing the reel. Failing to do so could cause latching issues.

LUBRICATION: Hose reel spring and bearings are factory lubricated and require no further lubrication.

REPLACING HOSE:

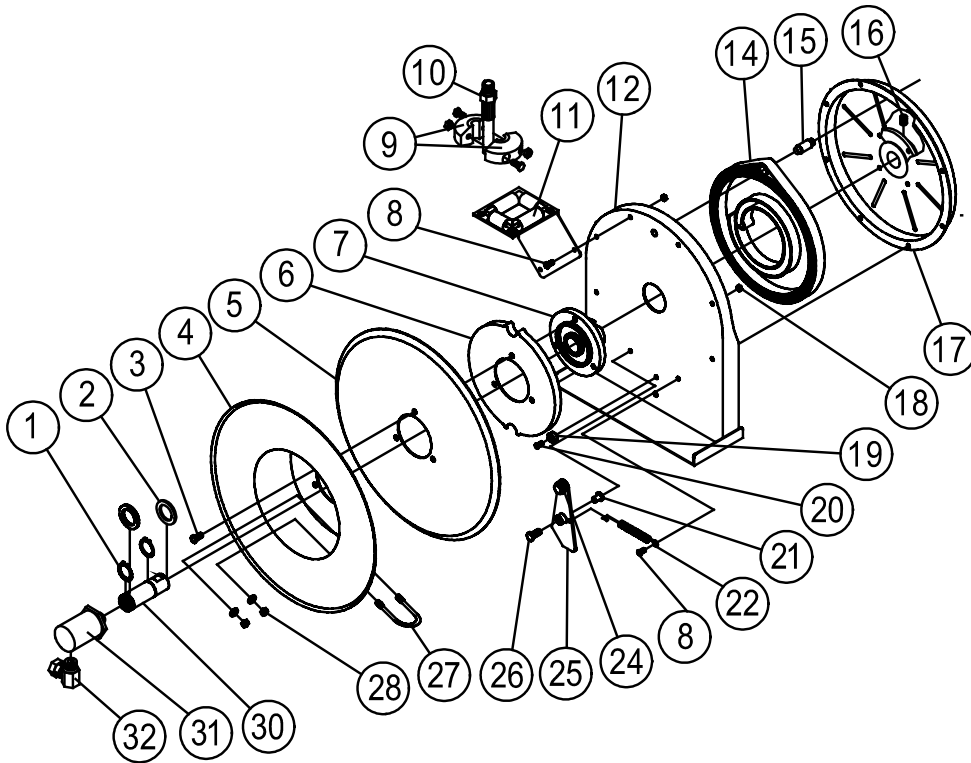
1. Wind spool flange clockwise-facing swivel-until spring is tight.
2. Back off three turns and latch.
3. Insert hose through roller guide.
4. Connect hose fitting to swivel joint and secure hose with clamps.

ADJUSTMENTS: To adjust spring tension, add or remove wraps of hose from the spool, one wrap at a time until desired tension is obtained.

REPAIRS: Extensive repairs should be performed only by an authorized serviceman or factory to avoid damage which may void your warranty. Remove all spring tension before beginning disassembly process.

Part No.75004 Rev.A

Model: 29801 Spring Driven Hose Reel



Item #	Description	# Req.	29801
9	Bumper Stop Assembly	1	2980-R027
10	Hose Assembly	1	75079
14	Drive Spring	1	
31	Swivel Assembly	1	
32	Swivel Union	1	
Hose I.D. and Length			3/8" x 30 FT
Reel Inlet Connection			3/8" F.P.T.
Max. Operating Pressure			200 P.S.I.
Max. Operating Temperature			160 °F

Item #	# Req.	Description	Item #	# Req.	Description	Item #	# Req.	Description
1	2	1" Snap Ring	11	1	Guide Arm Assembly	21	1	Latch Bushing
2	2	Spacing Washer	12	1	Base Assembly	22	1	Latch Spring
3	3	1/4-10 x 5/8" Self Tapping Screw	15	1	Spring Case Stud	24	1	O-ring
4	1	Sheave Flange	16	1	3/8-16 x 1/2" Set Screw	25	1	Latch Plate Assembly
5	1	Sheave Disk	17	1	Spring Case & Hub Assembly	26	1	10-32 x 1" Machine Screw
6	1	Latch Cam	18	8	10-32 x 3/8" Nyloc Nut	27	1	U-bolt Hose Clamp
7	2	Spring Arbor	19	1	Latch Plate Bumper	28	2	1/4-20 Nyloc Nut
8	7	10-32 x 1/2" Machine Screw	20	1	10-24 x 3/8" Self Tapping Screw	30	1	Main Shaft

Model: 74988 Reel Kit Pro Spray Valve

Item	# Part	# Req.	Description
31	75066	1	Hose RR 3/8m x 1/2f x 1 1/2 ft
32	2980-R020	1	Tube vinyl clear 6 inch
33	2913-3/8	1	Handle 3/4-14f X 3/8f
34	2922-5000	1	Gasket Handle
35	2990	1	Pro Spray Valve
36	3298	1	PST Thread Sealant

⚠ NOTE: Apply PST or Plumber Tape on the following locations to prevent any leaks.

1. Connect the lead-in line (31) to the reel (29801) inlet located on the right-hand side of the hose reel, by applying PST (36) or plumbers tape on the male 3/8" NPT threads on the lead-in line (31) and thread it to the reel (29801) using a wrench to support the swivel while tightening the lead-in line.
2. Connect the 1/2" female end of the lead-in line (31) to the water supply using PST (36) or plumbers tape and tighten.
3. Turn on water supply and flush the reel line to remove any debris from the reel for a few seconds and then turn off water supply.
4. Slide the clear vinyl tube (32) over the reel hose up to the bumper (9).
5. Attach the handle (33) to the reel hose (10). By applying PST (36) or plumbers tape on the 3/8" NPT male threads on reel hose and tighten.
6. Insert the gasket handle (34) into the handle (33) and then connect the pro spray valve (35).
7. Turn water supply on and check for leaks.

