

"PBHS-16-SSLR" PRO-BOWL HAND SINKS

Wall Mount, (1) 16"x16"x10" Deep Bowl w/Side Splashes

FEATURES:

- One Piece Deep Drawn Bowl
- All Sink Bowls Have Large Liberal Radii Corners
- Includes Basket Drain
- 1-1/2" Drain Plumbing Connection

SPECIFICATIONS:

- Bowl: Stainless Steel Tops Are TIG Welded, Exposed Welds Are Polished To Match Adjacent Surface
- Bowl: Type 300 Stainless Steel Polish, Satin Finish
- Bracket: Type 300 Stainless Steel Polish, Satin Finish
- Drain: 3-1/2" Drain Opening, With 1-1/2" NPS Outlet Connection

CERTIFICATIONS:



PBHS-W-1616-SSLR

ACCESSORIES

MODEL

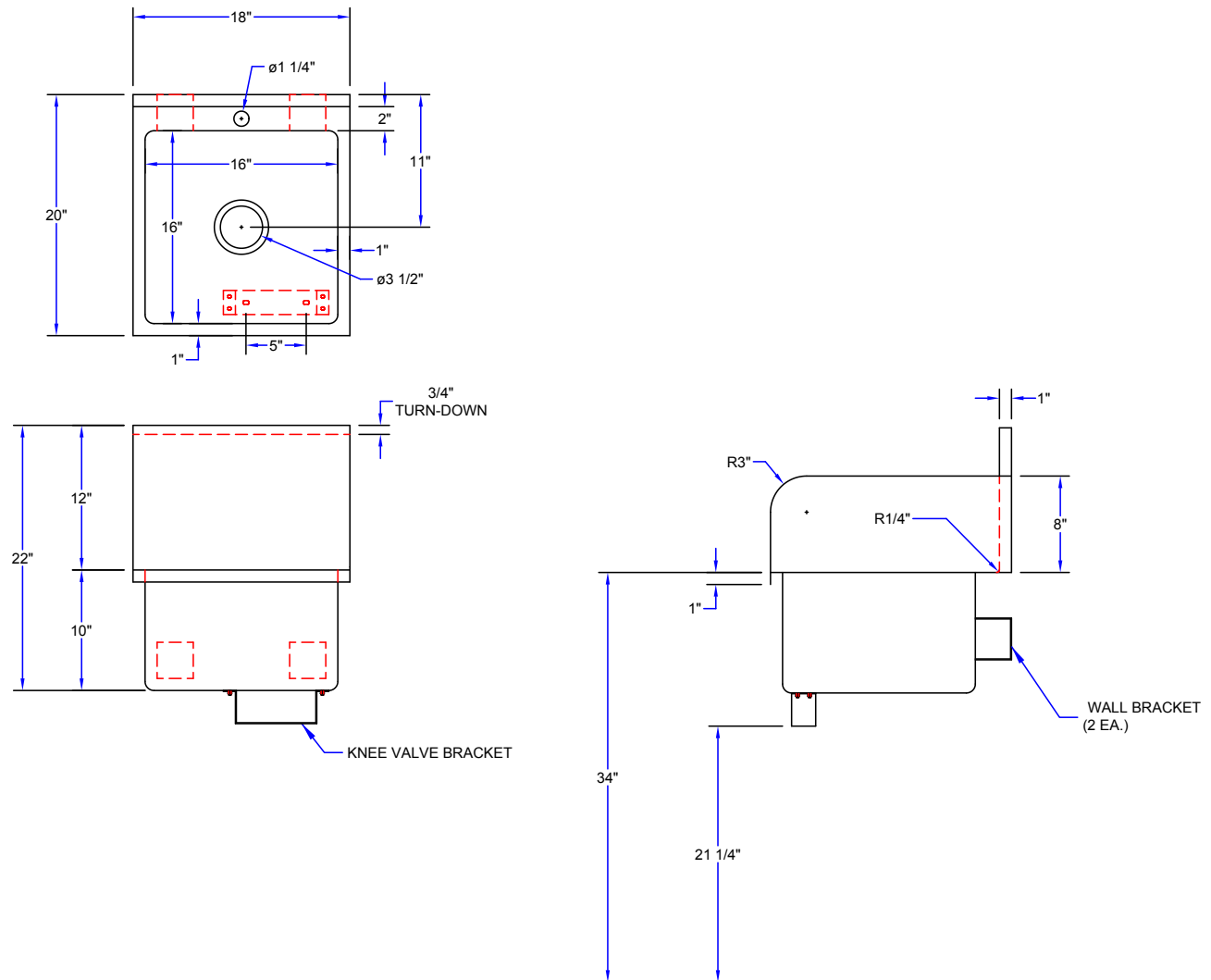
- Faucets
- ADA Wrist Blades
- Side Splashes
- Towel Dispenser
- Soap Dispenser
- Lever Wastes
- Over Flows
- P-Traps

"PBHS-16-SSLR" PRO-BOWL HAND SINKS

MODEL	BOWL SIZE (L X W X H)	OVERALL SINK SIZE (L X W X H)	WEIGHT (LBS)
PBHS-W-1616-SSLR	16"x16"x10"	18"x20"x22"	15

ALL DIMENSIONS ARE TYPICAL. TOLERANCE +/- .500". JOHN BOOS & CO. RESERVES THE RIGHT TO CHANGE SPECIFICATIONS WITHOUT NOTICE.

DETAILED SPECIFICATIONS



"PBHS-16-SSLR" PRO-BOWL HAND SINKS

MODEL	BOWL SIZE (L X W X H)	OVERALL SINK SIZE (L X W X H)	WEIGHT (LBS)
PBHS-W-1616-SSLR	16"x16"x10"	18"x20"x22"	15

ALL DIMENSIONS ARE TYPICAL. TOLERANCE +/- .500". JOHN BOOS & CO. RESERVES THE RIGHT TO CHANGE SPECIFICATIONS WITHOUT NOTICE.