

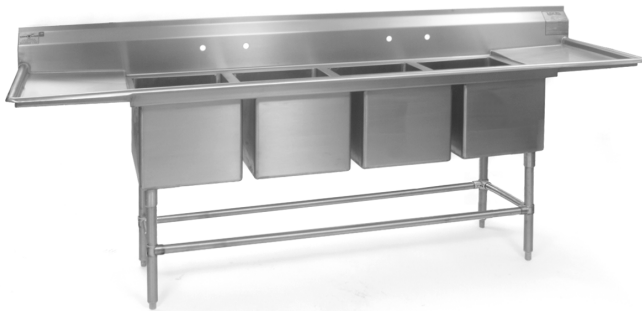


Profit from the Eagle Advantage®

# Specification Sheet

## Short Form Specifications

Eagle Spec-Master® Four-Compartment Sinks, model \_\_\_\_\_ . Unit constructed of 14 gauge 300 series, 18-8 stainless steel throughout. Sink bowls covered with a full 5/8" radius, and shall have a 14" water level. Drainboards, when required, shall be "V" creased for positive drainage. 9 1/2" high backsplash with 1" upturn and tile edge. Legs to be 1 1/2" O.D., stainless steel, with stainless steel gussets, stainless steel crossbracing and adjustable stainless steel bullet feet.



4-compartment sink

## Options / Accessories

- Lever drain
- Lever drain with overflow
- Twist handle drains
- Overflow hole
- Sink kits
- Faucets
- Polyboard sink covers
- Stainless steel sink covers
- Skirted front panel

## Assembly:

- Entire assembly is fuse-welded and planished, providing a one-piece seamless sink unit.
- Welded areas are high-speed belt blended to match adjacent surfaces with continuity of satin finish.
- All outside corners of assembly are bullnosed to provide safe, clean edges.
- Water supply is 1/2" (13mm) NPS for hot and cold lines.

## EAGLE GROUP

100 Industrial Boulevard, Clayton, DE 19938-8903 USA  
 Phone: 302-653-3000 • 800-441-8440 • Fax: 302-653-2065  
[www.eaglegrp.com](http://www.eaglegrp.com)  
[www.eaglegrpnews.com](http://www.eaglegrpnews.com)  
[www.eaglemhc.com](http://www.eaglemhc.com)

For custom configuration or fabrication needs, contact our **SpecFAB® Division**.  
 Phone: 302-653-3000 • Fax: 302-653-2065 • e-mail: [quotes@eaglegrp.com](mailto:quotes@eaglegrp.com)

Item No.: \_\_\_\_\_  
 Project No.: \_\_\_\_\_  
 S.I.S. No.: \_\_\_\_\_

# Spec-Master® FN Series Coved Corner Four-Compartment Sinks

## MODELS:

- FN2064-4-\*       FN2496-4-\*
- FN2072-4-\*       FN2880-4-\*
- FN2080-4-\*

\* See table on back for complete model numbers.

## Top:

- Drainboards, backsplash and rolled rims are 14 gauge 300 series stainless steel.
- Drainboards, when provided, are integrally welded.
- All rolled edges are highlighted for enhanced appearance.
- 9 1/2" high backsplash with 1" upturn and tile edge.
- 1 1/8" (29mm) faucet holes punched on 8" (203mm) centers.

## Base:

- Legs: 1 1/2" (41mm)-diameter stainless steel tubing with stainless steel gussets and fully adjustable stainless steel bullet feet.
- Crossbracing: Adjustable, 1 1/4" (32mm)-diameter stainless steel; running left-to-right and front-to-back.
- Leg locations fall directly under sink bowls\*, providing increased stability and maximum weight support.
- Leg gussets welded to a die-cut heavy-gauge stainless steel reinforcing corner plate.
- Legs are crossbraced on all sides for increased stability.

## Sink Bowls:

- 14 gauge 300 series stainless steel.
- 14" (356mm) water level, 17" (432mm) flood level.
- Sink compartments are coved on a full 5/8" (41mm) radius and constructed using state-of-the-art seamless welding techniques.
- Basket-type waste drain fits sink bowls' 3 1/2" (89mm) opening and features 1 1/2" (38mm) outlet.

\* On sinks with drainboard(s) 30" or longer, legs are located underneath the outer end of drainboard(s).

## Certifications / Approvals



AutoQuotes

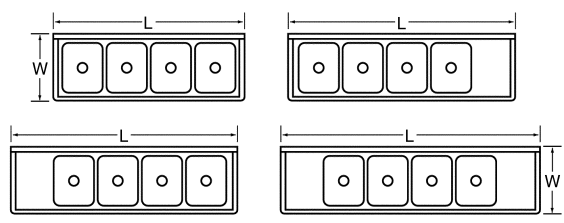




Profit from the Eagle Advantage®

Item No.: \_\_\_\_\_  
 Project No.: \_\_\_\_\_  
 S.I.S. No.: \_\_\_\_\_

# Spec-Master® FN Series Covered Corner Four-Compartment Sinks



**Drain location for rough-in**

bowl width	bowl length	Dimension A	
in. mm	in. mm	in.	mm
20" 508	16" 406	14"	356
20" 508	18" 457	14"	356
20" 508	20" 508	14"	356
24" 610	24" 610	16"	406
28" 711	20" 508	18"	457

model #	BOWL DIMENSIONS				quantity	DRAINBOARD		OVERALL DIMENSIONS				weight	
	width	length	width	length		length	width	length	width	length	lbs.	kg	
	in.	mm	in.	mm		in.	mm	in.	mm	in.	mm		
FN2064-4-14/3	20"	508	16"	406	0	-	-	27"	686	75"	1905	251	113.9
FN2064-4-18R or L-14/3	20"	508	16"	406	1	18"	457	27"	686	91½"	2324	273	123.4
FN2064-4-18-14/3	20"	508	16"	406	2	18"	457	27"	686	108"	2743	312	141.5
FN2064-4-24R or L-14/3	20"	508	16"	406	1	24"	610	27"	686	97½"	2477	308	139.7
FN2064-4-24-14/3	20"	508	16"	406	2	24"	610	27"	686	120"	3048	355	161.0
FN2064-4-30R or L-14/3	20"	508	16"	406	1	30"	762	27"	686	104"	2642	326	147.9
FN2064-4-30-14/3	20"	508	16"	406	2	30"	762	27"	686	132"	3353	361	163.8
FN2064-4-36R or L-14/3	20"	508	16"	406	1	36"	914	27"	686	109½"	2781	356	161.5
FN2064-4-36-14/3	20"	508	16"	406	2	36"	914	27"	686	144"	3658	392	177.8
FN2072-4-14/3	20"	508	18"	457	0	-	-	27"	686	83"	2108	282	127.9
FN2072-4-18R or L-14/3	20"	508	18"	457	1	18"	457	27"	686	99½"	2527	289	131.1
FN2072-4-18-14/3	20"	508	18"	457	2	18"	457	27"	686	116"	2946	339	153.8
FN2072-4-24R or L-14/3	20"	508	18"	457	1	24"	610	27"	686	105½"	2680	328	148.8
FN2072-4-24-14/3	20"	508	18"	457	2	24"	610	27"	686	128"	3251	373	169.2
FN2072-4-30R or L-14/3	20"	508	18"	457	1	30"	762	27"	686	112"	2845	367	166.5
FN2072-4-30-14/3	20"	508	18"	457	2	30"	762	27"	686	140"	3556	407	184.6
FN2072-4-36R or L-14/3	20"	508	18"	457	1	36"	914	27"	686	117½"	2985	401	181.9
FN2072-4-36-14/3	20"	508	18"	457	2	36"	914	27"	686	152"	3861	441	200.0
FN2080-4-14/3	20"	508	20"	508	0	-	-	27"	686	91"	2311	293	132.9
FN2080-4-18R or L-14/3	20"	508	20"	508	1	18"	457	27"	686	107½"	2731	321	145.6
FN2080-4-18-14/3	20"	508	20"	508	2	18"	457	27"	686	124"	3150	362	164.2
FN2080-4-24R or L-14/3	20"	508	20"	508	1	24"	610	27"	686	113½"	2883	328	148.8
FN2080-4-24-14/3	20"	508	20"	508	2	24"	610	27"	686	136"	3454	396	179.6
FN2080-4-30R or L-14/3	20"	508	20"	508	1	30"	762	27"	686	119½"	3035	407	184.6
FN2080-4-30-14/3	20"	508	20"	508	2	30"	762	27"	686	148"	3759	452	205.0
FN2080-4-36R or L-14/3	20"	508	20"	508	1	36"	914	27"	686	125½"	3188	445	201.9
FN2080-4-36-14/3	20"	508	20"	508	2	36"	914	27"	686	160"	4064	490	222.3
FN2496-4-14/3	24"	610	24"	610	0	-	-	31"	787	107"	2718	416	188.7
FN2496-4-18R or L-14/3	24"	610	24"	610	1	18"	457	31"	787	123½"	3137	444	201.4
FN2496-4-18-14/3	24"	610	24"	610	2	18"	457	31"	787	140"	3556	485	220.0
FN2496-4-24R or L-14/3	24"	610	24"	610	1	24"	610	31"	787	129½"	3289	451	204.6
FN2496-4-24-14/3	24"	610	24"	610	2	24"	610	31"	787	152"	3861	519	235.4
FN2496-4-30R or L-14/3	24"	610	24"	610	1	30"	762	31"	787	135½"	3442	530	240.4
FN2496-4-30-14/3	24"	610	24"	610	2	30"	762	31"	787	164"	4166	585	265.4
FN2496-4-36R or L-14/3	24"	610	24"	610	1	36"	914	31"	787	141½"	3594	578	262.2
FN2496-4-36-14/3	24"	610	24"	610	2	36"	914	31"	787	176"	4470	623	282.6
FN2880-4-14/3	28"	711	20"	508	0	-	-	35"	889	91"	2311	404	183.3
FN2880-4-18R or L-14/3	28"	711	20"	508	1	18"	457	35"	889	107½"	2731	431	195.5
FN2880-4-18-14/3	28"	711	20"	508	2	18"	457	35"	889	124"	3150	471	213.7
FN2880-4-24R or L-14/3	28"	711	20"	508	1	24"	610	35"	889	113½"	2883	438	198.7
FN2880-4-24-14/3	28"	711	20"	508	2	24"	610	35"	889	136"	3454	504	228.6
FN2880-4-30R or L-14/3	28"	711	20"	508	1	30"	762	35"	889	119½"	3048	515	233.6
FN2880-4-30-14/3	28"	711	20"	508	2	30"	762	35"	889	148"	3759	569	258.1
FN2880-4-36R or L-14/3	28"	711	20"	508	1	36"	914	35"	889	125½"	3188	562	254.9
FN2880-4-36-14/3	28"	711	20"	508	2	36"	914	35"	889	160"	4064	605	274.4

**EAGLE GROUP**  
 100 Industrial Boulevard, Clayton, DE 19938-8903 USA  
 Phone: 302-653-3000 or 800-441-8440 • Fax: 302-653-2065  
 www.eaglegrp.com • www.eaglegrpnews.com • www.eaglehmc.com

Printed in U.S.A.  
 ©2023 by Eagle Group  
 Rev. 01/23

Spec sheets available for viewing, printing or downloading from our online literature library at our websites

Although every attempt has been made to ensure the accuracy of the information provided, we cannot be held responsible for typographical or printing errors. Information and specifications are subject to change without notice. Please confirm at time of order.