

# Fusion

GHSSCD 37"H Refrigerated Combination Case

**Structural Concepts®**

DELIVERING FRESH. ALWAYS.™

- **GHSSCD436RLB** 51"L x 59-1/4"D x 37-5/8"H
- **GHSSCD536RLB** 62-7/8"L x 59-1/4"D x 37-5/8"H
- **GHSSCD636RLB** 75-3/8"L x 59-1/4"D x 37-5/8"H
- **GHSSCD836RLB** 99-3/4"L x 59-1/4"D x 37-5/8"H
- **GHSSCD1236RLB** 148-1/2"L x 59-1/4"D x 37-5/8"H

## Included

- 16" Solid shelf
- LED top & shelf lights
- One year parts & labor warranty
- Remote DX refrigeration
- Stainless steel rear exterior
- Warmest average product temperature of 40°F or less



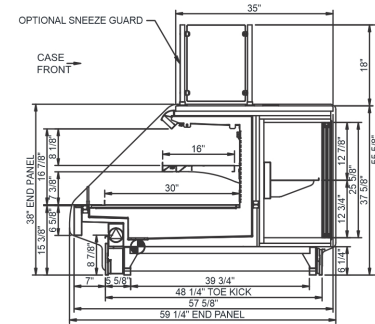
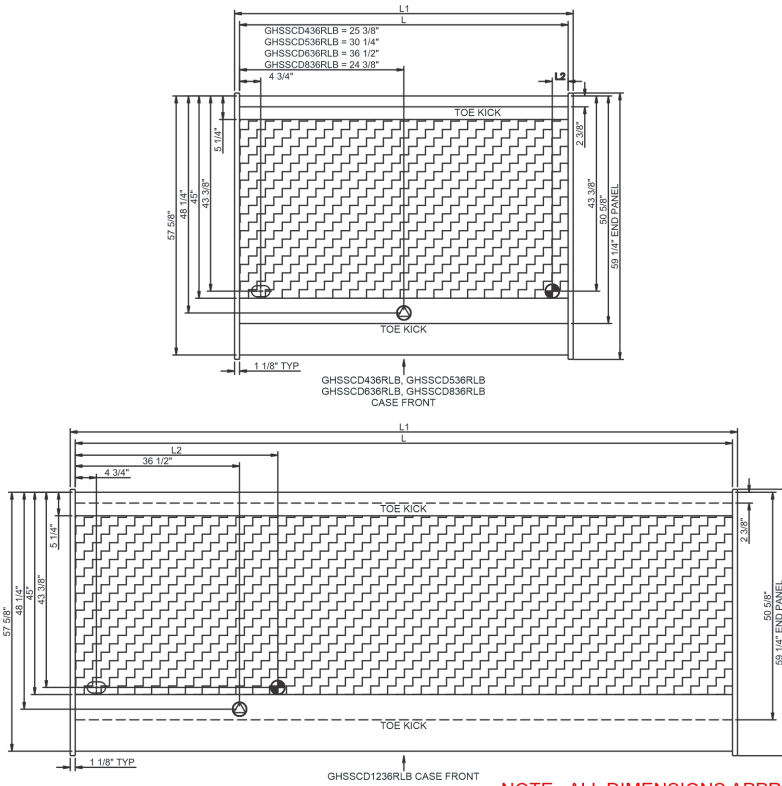
**GHSSCD836RLB**

Specify	Standard Features	Additional Options
<b>EXTERIOR COLOR</b>	• Laminate (stock colors)	• Laminate (non-stock colors) • Powder coated (stock/non-stock colors) • Powder coated Silversan Black • Stainless steel
<b>INTERIOR COLOR</b>	• Powder coated Silversan Black	• Stainless steel
<b>LOWER FRONT PANEL COLOR</b>	• Powder coated Silversan Black	• Powder coated (stock/non-stock colors) • Stainless steel
<b>BASE SUPPORT</b>	• Rail system for shims	
<b>BUMPER FRONT</b>	• 1" Boston bumper (specify color)	• 1" Stainless steel plate rail bumper
<b>END PANELS</b>	• Full w/stainless steel mirror interior	• Cutaway w/glass • None (specify per line-up)
<b>REAR STORAGE</b>	• Non-refrigerated rear storage w/ sliding doors	• Non-refrigerated cake decorator storage • Refrigerated rear storage w/ sliding doors
<b>WORK SURFACE</b>	• Stainless steel	
<b>PRICE TAG MOLDING</b>	• None	• 1" Price tag molding (black or silver) • Universal price tag molding (clear w/ open top)
<b>SNEEZE GUARD</b>	• Clear glass w/ stainless steel ADM posts	
<b>LIGHTS</b>	• LED 3500K w/ frosted lens	• LED 4000K w/ frosted lens
<b>ELECTRICAL CONNECTION</b>	• Electrical leads (remote)	
<b>REFRIGERATION</b>	• Remote DX refrigeration	• Remote w/thermostat, solenoid & TXV
<b>SENSOR</b>	• None	• CPC discharge air sensor (remote)
<b>ACCESSORIES</b>		• Night curtain, retractable, non-locking • Removable wire security cover, locking

<b>Intended Environment:</b> Type I - Designed to operate in ambient conditions of 75°F with 55% relative humidity unless noted otherwise in system information below.		
<b>Zone</b>	<b>Intended Product To Be Displayed</b>	<b>Warmest Avg Prod Temp ° F</b>
1	Packaged refrigerated products	40

**PLAN VIEW**

**SIDE VIEW**



**NOTE: ALL DIMENSIONS APPROXIMATE**

- ELECTRICAL JUNCTION BOX (SUPPLIED WITH 6" LEADS OR POWER CORD).**
- REFRIGERATION LINE CONNECTION.**
- SELF-CONTAINED CASE SERVICE ACCESS AREA.**
- LOCATION OF DRAIN TUBE FOR REMOTE REF. ONLY (SUPPLIED WITH 3/4" OR 1 1/2" PVC TUBE).**
- REMOTE FLOOR SINK & UTILITIES ACCESS AREA.**
- DRY CASE SERVICE ACCESS AREA.**

Model Technical Specifications																
Model	L"	L1"	L2"	System Circuit Volts			Phs	Freq	Amps ***	Watts	Wires	NEMA Plug	SST	Conv. Rack RTUH	Para. Rack RTUH	Est Wt
GHSSCD436RLB	48.75	51.00	3.50	Remote (DX)	Circuit #1	110-120	1	60	1.19	62	2+G	Leads Multiple	20.00	3110	2880	500
GHSSCD536RLB	60.63	62.88	3.50	Remote (DX)	Circuit #1	110-120	1	60	1.55	93	2+G	Leads Multiple	20.00	3499	3240	600
GHSSCD636RLB	73.13	75.38	3.50	Remote (DX)	Circuit #1	110-120	1	60	1.61	105	2+G	Leads Multiple	20.00	3888	3600	700
GHSSCD836RLB	97.50	99.75	3.50	Remote (DX)	Circuit #1	110-120	1	60	1.68	123	2+G	Leads Multiple	20.00	5832	5400	950
GHSSCD1236RLB	146.25	148.50	45.13	Remote (DX)	Circuit #1	110-120	1	60	2.18	186	2+G	Leads Multiple	24.00	7906	7320	1,400

\*\*\* Does not include electric defrost on freezer models.

**Regulatory Approvals:**

All Models | Accordance with AHRI Std 1200  
 ETL Listed to UL 471  
 ETL Listed to CAN/CSA 22.2 No. 120  
 ETL Sanitation to NSF/ANSI 7



In Accordance with  
**AHRI Std 1200**

**DOE 2017**  
Energy Efficiency  
Compliant

**Important Notes:**

- 1) ELECTRICAL NOTE: If GFCI is required, a GFCI breaker MUST be used in lieu of a GFCI receptacle.
- 2) 62" minimum door entry clearance required (without shipping skid).
- 3) Units must be shimmed during installation to ensure the unit is level and plumb.

**⚠ WARNING:** This product can expose you to chemicals, including Urethane (Ethyl Carbamate), which are known to the State of California to cause cancer and birth defects or other reproductive harm. For more information go to [www.P65Warnings.ca.gov](http://www.P65Warnings.ca.gov).