



Your Solutions Partner

Specifications

F.O.B. Sedalia, Missouri 65301

Approval Stamp(s):

HOT HOLDING UNIT - WATERLESS WELL

PRODUCT INFORMATION:

PROJECT: _____

ITEM: _____

QUANTITY: _____

MODEL:

Waterless Hot Food Well

- WW-1-120 1 Well - 120V
- WW-1-208/240 1 Well - 208V/240
- WW-2-120 2 Well - 120V
- WW-2-208/240 2 Well - 208V/240
- WW-3-120 3 Well - 120V
- WW-3-208/240 3 Well - 208V/240
- WW-4-120 4 Well - 120V
- WW-4-208/240 4 Well - 208V/240
- WW-5-120 5 Well - 120V
- WW-5-208/240 5 Well - 208V/240
- WW-6-120 6 Well - 120V
- WW-6-208/240 6 Well - 208V/240

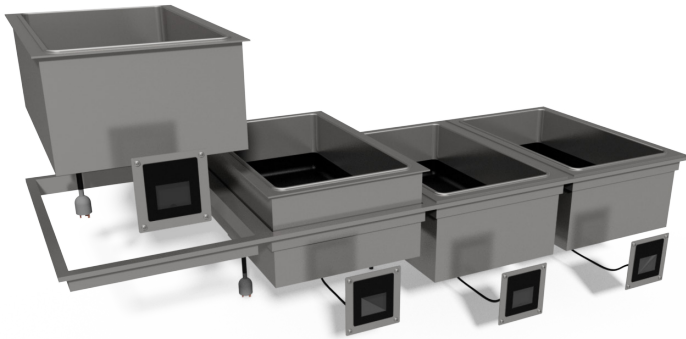
BODY:

- Stainless Steel well
- Fully insulated galvanized outer body
- Drop-In style with 1/2" flange
- Easy lift out from top for easy access and fast service without need to remove food guards.
- Standard with 6' cord and plug
- No drain connection required
- Removable non-stick pan liner to facilitate easy cleaning - Standard with each unit
 - Material: FDA approved silicone rubber
 - Color: Black

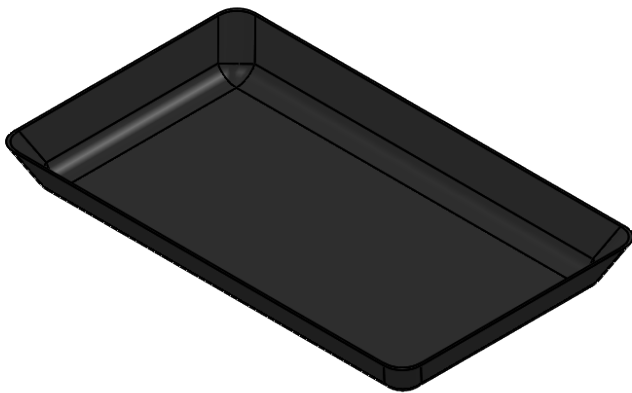
CONTROLS:

- Touch Screen Control is easy to use and learn
- Three (3) preset temperatures
- Easily programmable for custom temperatures
- Controls have a built-in Wi-Fi modem and redundant controls capabilities for future activation
- Low voltage controls have "plug and play" screen replacement
- 72" Control wire for easy installation

A.I.A. File No. 35-C-13



Model - WW-4



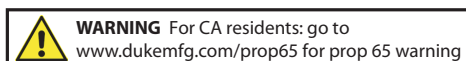
Silicone Well Liner

Agency Listings:

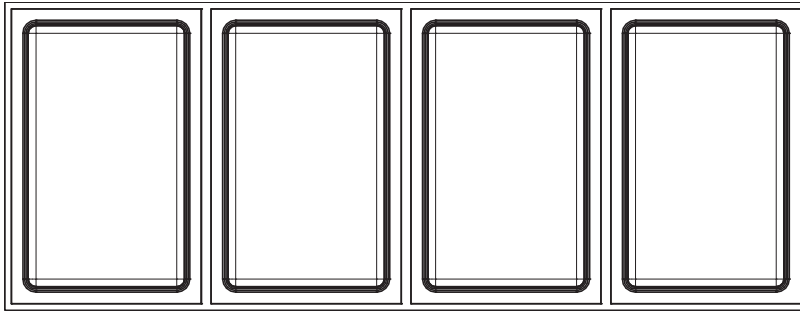
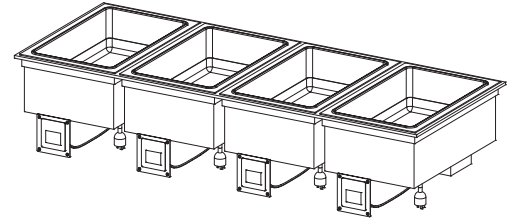


DUKE MANUFACTURING CO.
 2305 N. Broadway
 St. Louis, MO 63102
 800.735.3853 Toll Free
 314.231.5074 Fax
 www.dukemfg.com
 SS-1180 Waterless Hot Food Well

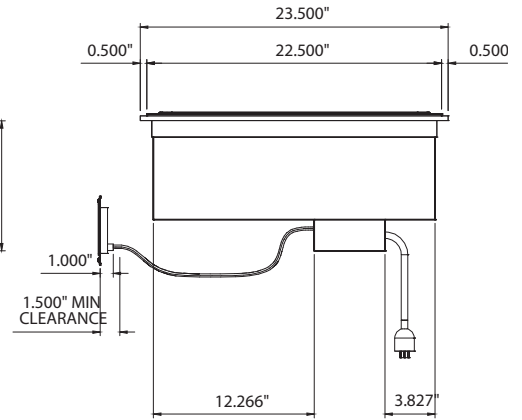
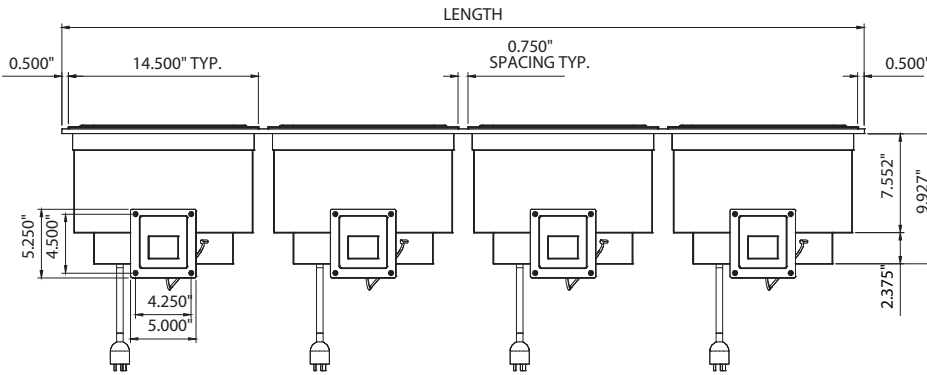
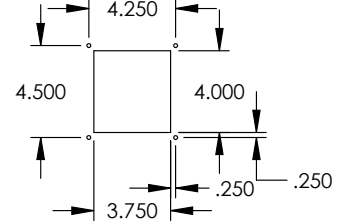
Specification subject to change



Waterless Hot Food Well



Control Cutout



ELECTRICAL SPECIFICATIONS:

DIMENSIONS:

Freight Class: 100

Model	Volts 60Hz	Total Watts**	Total Amps**	NEMA per well*	Height: 10.30in (26.16cm)				Countertop Cutout				Cube Ft. crated	Crated Ship Weight	
					Width		Length		Width		Length			lbs.	kg
					In.	cm	In.	cm	In.	cm	In.	cm	In.	cm	
WW-1-120	120	665	5.5	5-15	22.5	57.15	14.50	36.9	21.90	55.6	14.00	35.6	3.82	25	11.34
WW-1-208/240	208/240	500/665	2.4/2.8	6-20	23.5	59.69	30.75	78.1	22.50	57.2	29.75	75.6	7.64	50	22.68
WW-2-120	120	1330	11.1	5-15-x2	23.5	59.69	46.00	116.8	22.50	57.2	46.00	116.9	11.46	75	34.02
WW-2-208/240	208/240	1000/1330	4.8/5.5	6-20-x2	23.5	59.69	61.25	155.6	22.50	57.2	60.25	153.0	15.28	100	45.36
WW-3-120	120	1995	16.6	5-15-x3	23.5	59.69	76.50	194.3	22.50	57.2	75.50	191.9	19.1	125	56.70
WW-3-208/240	208/240	1500/1995	7.2/8.3	6-20-x3	23.5	59.69	91.75	233.1	22.50	57.2	90.75	230.6	22.92	150	68.04
WW-4-120	120	2660	22.2	5-15-x4	23.5	59.69			22.50	57.2					
WW-4-208/240	208/240	2000/2660	9.6/11.1	6-20-x4											
WW-5-120	120	3325	27.7	5-15-x5											
WW-5-208/240	208/240	2500/3325	12.0/13.9	6-20-x5											
WW-6-120	120	3990	33.3	5-15-x6											
WW-6-208/240	208/240	3000/3990	14.4/16.6	6-20-x6											

* = Each well has it's own individual cord and plug. i.e.WW-3-208 will have 3ea. NEMA 6-20P plugs.

** = Watts and Amps shown are total of all wells per model.



Duke Manufacturing Co.
2305 N. Broadway
St. Louis, MO 63102

Phone: 314-231-1130
Toll Free: 1-800-735-3853
Fax: 314-231-5074

www.dukemfg.com