

"4CS6R5" MODULAR BASE WORK TABLES

16GA Stainless Steel Top w/5" Rear Riser - Sliding Doors

FEATURES:

- 5" Backsplash Top With 1-1/2" Stallion Edge On Front With 90 Degree Bend Down Side Edge For Table Line-Up
- Top Is Sound Deadened Reinforced With 2"x3" Channel Running Entire Length Of Top
- Stainless Steel Leg With Adjustable Feet
- Optional Fixed (Suffix "-1S") Or Adjustable (Suffix "-1AS") Intermediate Shelf Available
- 36" Working Height
- Shipped Standard Welded Set-Up

SPECIFICATIONS:

- Top: Stainless Steel Cabinet Tops TIG Welded, Exposed Welds Are Polished To Match Adjacent Surface #4 Polished, Satin Finish
- Removable Stainless Steel Legs
- Sliding Doors Are Constructed As Double Panel Doors
- Top: 16GA Type 300 Stainless Steel With #4 Polish, Satin Finish
- Body: 18GA Type 430 Stainless Steel
- Legs: Stainless Steel With Adjustable Feet



CERTIFICATIONS:



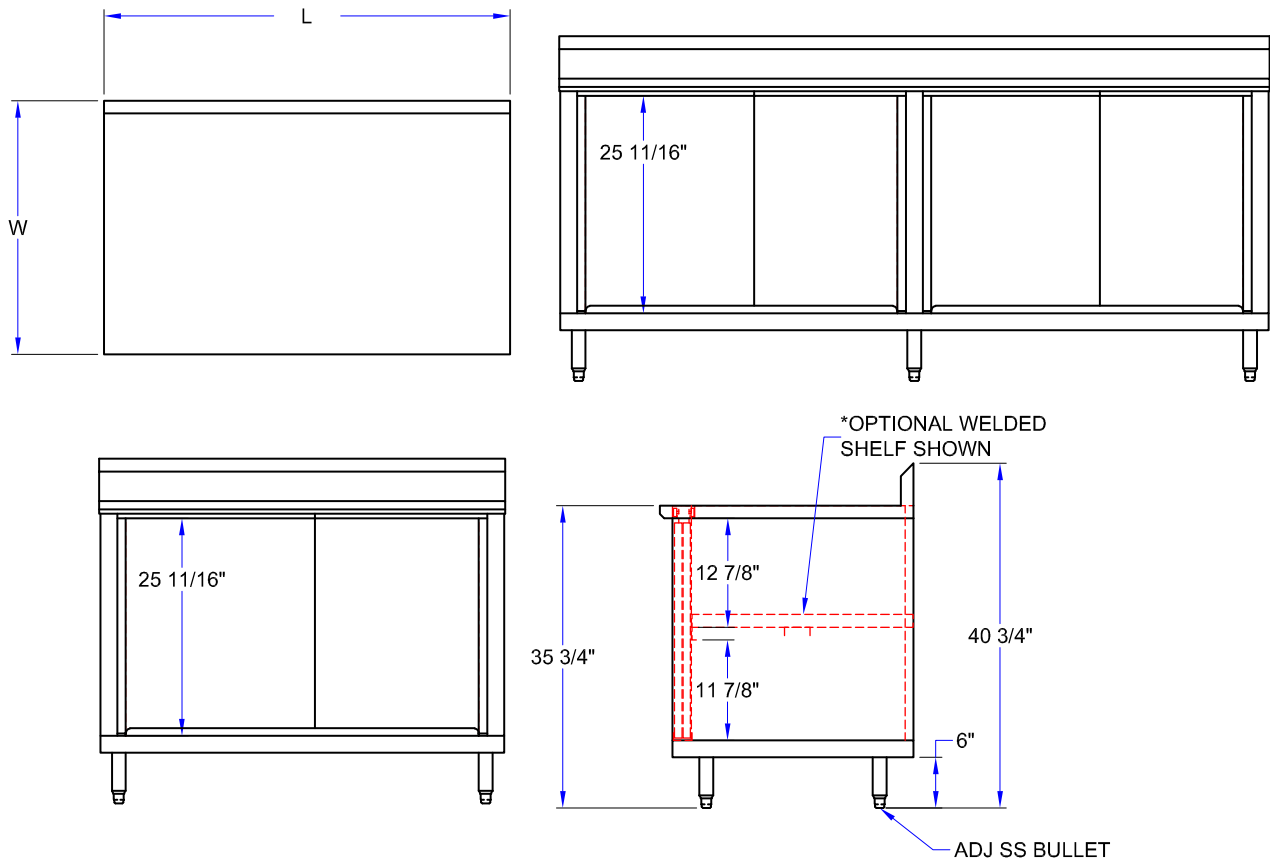
4CS6R5-3048

"4CS6R5" MODULAR BASE WORK TABLES

LENGTH	24" WIDE	WT (LBS)	30" WIDE	WT (LBS)	36" WIDE	WT (LBS)
48"	4CS6R5-2448	280	4CS6R5-3048	305	4CS6R5-3648	340
60"	4CS6R5-2460	320	4CS6R5-3060	345	4CS6R5-3660	380
72"	4CS6R5-2472	365	4CS6R5-3072	385	4CS6R5-3672	425
84"	4CS6R5-2484	405	4CS6R5-3084	425	4CS6R5-3684	465
96"	4CS6R5-2496	455	4CS6R5-3096	470	4CS6R5-3696	510
108"	4CS6R5-24108	495	4CS6R5-30108	510	4CS6R5-36108	550
120"	4CS6R5-24120	530	4CS6R5-30120	560	4CS6R5-36120	590
132"	4CS6R5-24132	565	4CS6R5-30132	603	4CS6R5-36132	633
144"	4CS6R5-24144	600	4CS6R5-30144	645	4CS6R5-36144	675

ALL DIMENSIONS ARE TYPICAL. TOLERANCE +/- .500". JOHN BOOS & CO. RESERVES THE RIGHT TO CHANGE SPECIFICATIONS WITHOUT NOTICE.

DETAILED SPECIFICATIONS



MODEL # STRUCTURE

6 = 16GA Top

CS = Sliding Doors

4 = 430 S.S. Base

R5 = 5" Tall Riser

24 = Width

60 = Length

4CS6R5-2460

"4CS6R5" MODULAR BASE WORK TABLES

LENGTH	24" WIDE	WT (LBS)	30" WIDE	WT (LBS)	36" WIDE	WT (LBS)
48"	4CS6R5-2448	280	4CS6R5-3048	305	4CS6R5-3648	340
60"	4CS6R5-2460	320	4CS6R5-3060	345	4CS6R5-3660	380
72"	4CS6R5-2472	365	4CS6R5-3072	385	4CS6R5-3672	425
84"	4CS6R5-2484	405	4CS6R5-3084	425	4CS6R5-3684	465
96"	4CS6R5-2496	455	4CS6R5-3096	470	4CS6R5-3696	510
108"	4CS6R5-24108	495	4CS6R5-30108	510	4CS6R5-36108	550
120"	4CS6R5-24120	530	4CS6R5-30120	560	4CS6R5-36120	590
132"	4CS6R5-24132	565	4CS6R5-30132	603	4CS6R5-36132	633
144"	4CS6R5-24144	600	4CS6R5-30144	645	4CS6R5-36144	675

ALL DIMENSIONS ARE TYPICAL. TOLERANCE +/- .500". JOHN BOOS & CO. RESERVES THE RIGHT TO CHANGE SPECIFICATIONS WITHOUT NOTICE.