

# Banquet Stack Chairs



75 2 Frames  
Design  
Variations



**DOME**



**SILHOUETTE**

# Banquet Stack Chairs

# 9200 SERIES

## DOMESTIC STACK CHAIR



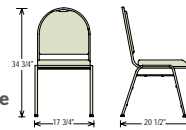
**Steel Standard:** ASTM A513  
**Foam Standard:** 1.8lb. density, 46 ILD  
**Vinyl:** .80MM thickness  
 Solid fabrics rated to 130,000 double rubs  
 Patterned fabrics rated to 67,000 double rubs



**Optional Felt Glides**  
GL90-FT



**Optional ganging device**  
PGC81



### STANDARD FEATURES



Built-in stacking bars and 12 plastic stack bumpers ensure stacking securely



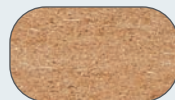
Back rests on 4 tabs (2 on each side) for extra durability



7/8" square 18 gauge tubing with non-marring glides and 5/8" underseat and H braces



Waterfall seat, padded with 2" of 1.8lb. high-density Grade A foam with double-stitched box seat



MDF core seat and back



#### FABRIC UPHOLSTERY PATTERN



**9264-SV** DIAMOND NAVY FABRIC / SILVERVEIN FRAME  
**9264-BT** DIAMOND NAVY FABRIC / BLACK SANTEX FRAME

#### FABRIC UPHOLSTERY SOLIDS



**9254-SV** MIDNIGHT BLUE FABRIC / SILVERVEIN FRAME  
**9254-BT** MIDNIGHT BLUE FABRIC / BLACK SANTEX FRAME  
**9258-SV** RICH MAROON FABRIC / SILVERVEIN FRAME  
**9258-BT** RICH MAROON FABRIC / BLACK SANTEX FRAME  
**9260-SV** EBONY BLACK FABRIC / SILVERVEIN FRAME  
**9260-BT** EBONY BLACK FABRIC / BLACK SANTEX FRAME

#### VINYL UPHOLSTERY



**9201-M** FRENCH BEIGE VINYL / MOCHA FRAME  
**9204-SV** MIDNIGHT BLUE VINYL / SILVERVEIN FRAME  
**9204-BT** MIDNIGHT BLUE VINYL / BLACK SANTEX FRAME  
**9210-SV** PANTHER BLACK VINYL / SILVERVEIN FRAME  
**9210-BT** PANTHER BLACK VINYL / BLACK SANTEX FRAME

# Banquet Stack Chairs



# 9300 SERIES SILHOUETTE STACK CHAIR



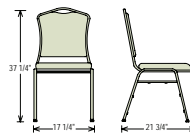
**Steel Standard:** ASTM A513  
**Foam Standard:** 1.8lb. density, 46 ILD  
**Vinyl:** .80MM thickness  
 Solid fabrics rated to 130,000 double rubs  
 Patterned fabrics rated to 67,000 double rubs



**Optional Felt Glides**  
GL90-FT



**Optional ganging device**  
PGC81



## STANDARD FEATURES



7/8" square 18 gauge tubing with non-marring glides and 5/8" underseat and H braces



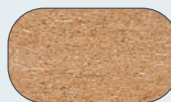
Premium double back with 4 concealed steel backrest tabs for an elegant look



Built-in stacking bars and 12 plastic stack bumpers ensure stacking securely



Waterfall seat, padded with 2" of 1.8lb. high-density Grade A foam with double-stitched box seat



MDF core seat and back



### FABRIC/FRAME COMBOS

**9354-SV** MIDNIGHT BLUE FABRIC / SILVERVEIN FRAME

**9360-BT** ESQVY BLACK FABRIC / BLACK SANTEX FRAME

**9361-BT** NATURAL CHOCOLATIER FABRIC / BLACK SANTEX FRAME

**9362-BT** NATURAL GREYSTONE FABRIC / BLACK SANTEX FRAME

**9364-SV** DIAMOND NAVY FABRIC / SILVERVEIN FRAME

**9368-SV** DIAMOND BURGUNDY FABRIC / SILVERVEIN FRAME

**9374-BT** NATURAL BLUE FABRIC / BLACK SANTEX FRAME

**9378-BT** NATURAL TAUPE FABRIC / BLACK SANTEX FRAME

### CHAIR FRAMES

 SILVERVEIN

 BLACK SANTEX

### VINYL/FRAME COMBOS

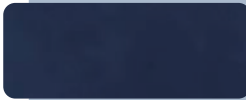

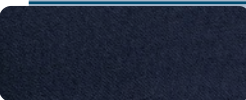
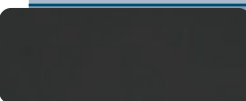



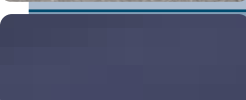



 **9304-SV** MIDNIGHT BLUE VINYL / SILVERVEIN FRAME

 **9310-BT** PANTHER BLACK VINYL / BLACK SANTEX FRAME

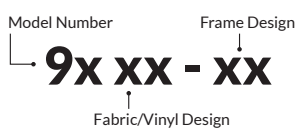
 **9310-SV** PANTHER BLACK VINYL / SILVERVEIN FRAME

# See frame/upholstery combination cubes for available series on 24Hr Quickship!

All custom variations can be ordered with 200 chair minimum quantity and 12 week lead time. Upcharge may apply.

		CHAIR FRAME	
		BLACK SANTEX CODE: BT	SILVERVEIN CODE: SV
STANDARD VINYL	 MIDNIGHT BLUE CODE: 04	9200 QUICKSHIP 9300 CUSTOM	9200 QUICKSHIP 9300 QUICKSHIP
	 PANTHER BLACK CODE: 10	9200 QUICKSHIP 9300 QUICKSHIP	9200 QUICKSHIP 9300 QUICKSHIP
	 MIDNIGHT BLUE CODE: 54	9200 QUICKSHIP 9300 CUSTOM	9200 QUICKSHIP 9300 QUICKSHIP
	 EBONY BLACK CODE: 60	9200 QUICKSHIP 9300 QUICKSHIP	9200 QUICKSHIP 9300 CUSTOM
STANDARD FABRIC	 RICH MAROON CODE: 58	9200 QUICKSHIP 9300 CUSTOM	9200 QUICKSHIP 9300 CUSTOM
	 NATURAL CHOCOLATIER CODE: 61	9200 CUSTOM 9300 QUICKSHIP	CUSTOM
	 NATURAL GREYSTONE CODE: 62	9200 CUSTOM 9300 QUICKSHIP	CUSTOM
	 NATURAL BLUE CODE: 74	9200 CUSTOM 9300 QUICKSHIP	CUSTOM
	 NATURAL TAUPE CODE: 78	9200 CUSTOM 9300 QUICKSHIP	CUSTOM
	 DIAMOND NAVY CODE: 64	9200 QUICKSHIP 9300 CUSTOM	9200 QUICKSHIP 9300 QUICKSHIP
	 DIAMOND BURGANDY CODE: 68	CUSTOM	9200 CUSTOM 9300 QUICKSHIP

### Model Number Configuration



Model	Description
93	9300 SERIES SILHOUETTE STACK CHAIR
92	9200 SERIES DOME STACK CHAIR

# Banquet Stack Chairs

## PREMIUM FABRICS



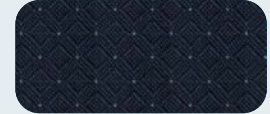
**Auburn**  
HTS-2201



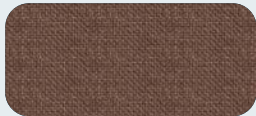
**Burgundy**  
HTS-26



**Charcoal**  
HTS-04



**Cobalt**  
HTS-2204



**Coffee**  
HTS-0317



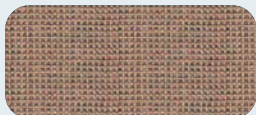
**Fossil**  
HTS-944



**Golden Burgundy**  
HTS-7035



**Grape**  
HTS-03



**Hazel**  
HTS-2114



**Hunter Green**  
HTS-24



**Indigo**  
HTS-14



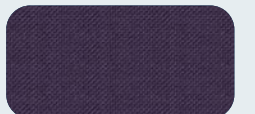
**Medium Blue**  
HTS-06



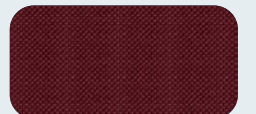
**Mixed Tan**  
HTS-101



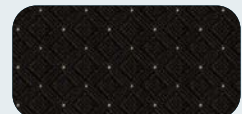
**Pink Grape**  
HTS-30



**Purple**  
HTS-23



**Red Rose**  
HTS-11



**Walnut**  
HTS-2211

## PREMIUM VINYL



**Coffee Brown**  
287



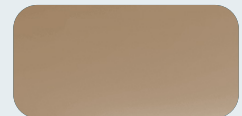
**Coyote Brown**  
334



**Dark Blue**  
162



**Dark Brown**  
203



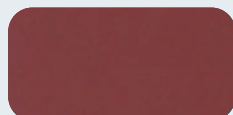
**French Beige**  
01



**Glossy Black**  
202



**Prussian Blue**  
770



**Pleasant Burgundy**  
08



**Rich Burgundy**  
154



**Simple Black**  
108

# Stack & TRANSPORT

WITH DOLLY MODEL DY9000 AND DY81



DIMENSIONS: 18"W X 34"D X 52"H  
MAX CAPACITY: 8-10 CHAIRS



1" ROUND  
TUBULAR  
STEEL

8" DIAM. X 2"W  
HARD RUBBER  
CASTERS

Now includes  
conveniently  
hooked-on bungee  
cord to secure the  
chairs when  
stacked on dolly



Transport dolly DY-9000



Transport dolly DY-81