

# 15" Wide WALL CABINETS

Item #: \_\_\_\_\_ Qty #: \_\_\_\_\_

Model #: \_\_\_\_\_

Project #: \_\_\_\_\_



**SLIDING DOORS**  
WCS Series



**OPEN**  
WCO Series



**HINGE DOORS**  
WCH Series

## THREE AVAILABLE OPTIONS!

### WCS Series

L	Sliding Door Unit	# of Doors	Wt.	Cu.
36"	NOT AVAILABLE			
48"	WCS-15-48	2	155 lbs.	21
60"	WCS-15-60	2	185 lbs.	26
72"	WCS-15-72	2	220 lbs.	31
96"	WCS-15-96	4	295 lbs.	41

### WCO Series

L	Open Door Unit	Wt.	Cu.
36"	WCO-15-36	95 lbs.	17
48"	WCO-15-48	120 lbs.	21
60"	WCO-15-60	145 lbs.	26
72"	WCO-15-72	180 lbs.	31
96"	WCO-15-96	240 lbs.	41

### WCH Series

L	Hinged Door Unit	# of Doors	Wt.	Cu.
36"	WCH-15-36	2	120 lbs.	17
48"	WCH-15-48	2	150 lbs.	21
60"	WCH-15-60	2	180 lbs.	26
72"	WCH-15-72	4	240 lbs.	31
96"	WCH-15-96	4	320 lbs.	41

### FEATURES:

Wall hung cabinet with intermediate shelf.  
Sloping Top enhances sanitary configuration.

### CONSTRUCTION:

All TIG welded using the TIG process.  
Welded seams finished to match adjacent surfaces.  
Unit polished to a satin finish.

### MATERIAL:

18 gauge type 430 series stainless steel.  
Stainless steel hinges and handles.  
Mounting hardware is not supplied.



**Optional Door Lock**  
TA-46

One lock for each pair of sliding doors or each individual hinged door



**Additional Mid-Shelf**  
WC-SHELF

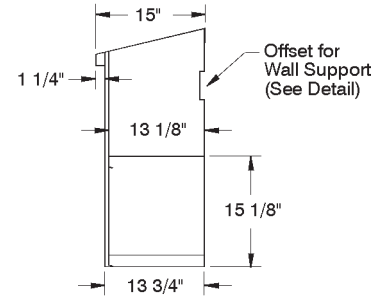
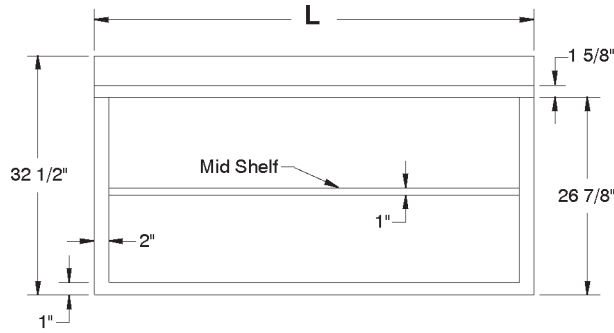
One mid-shelf is standard

# DETAILS and SPECIFICATIONS

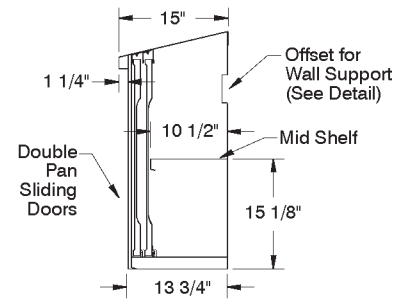
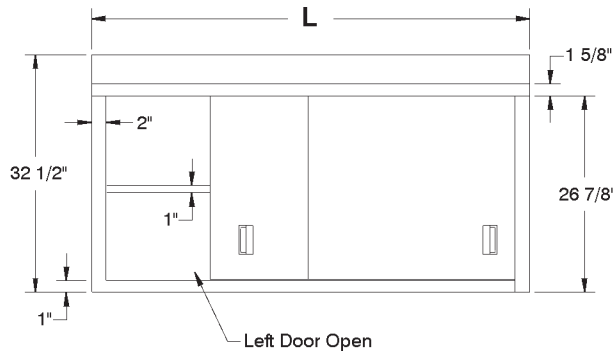
TOL ± .500"

ALL DIMENSIONS ARE TYPICAL

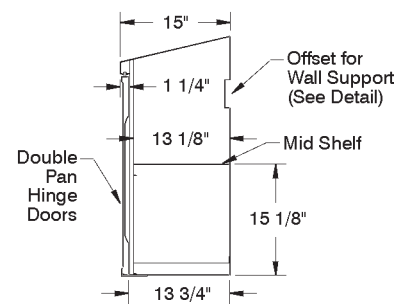
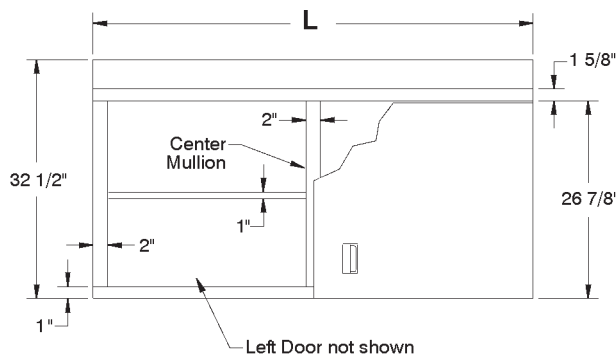
## WCO-Series Open Style



## WCS-Series Sliding Door Style



## WCH-Series Hinge Door Style



### OFFSET DETAIL

