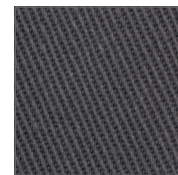


ANGUILLA EXECUTIVE CHEF COAT

CROSS-OVER COLLAR • FRENCH CUFFS • CLOTH-COVERED BUTTONS

NEW



CHR (charcoal)

Item: FBCC
Sizes: XXS-5XL

DESCRIPTION

The Anguilla Executive Chef Coat features a long-sleeve, double-breasted design with french cuffs, a cross-over collar, cloth-covered buttons, a left chest inset pocket and a left sleeve thermometer pocket. Available in charcoal only.

FEATURES

- 7.4 oz. 65/35 poly/cotton
- Long-sleeve, double-breasted
- French cuffs and cross-over collar
- Two internal jigger buttons
- Cloth-covered buttons
- Left chest inset pocket
- Left sleeve thermometer pocket