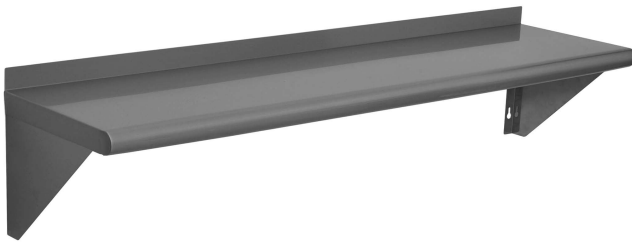


Specification Sheet

Short Form Specifications

BlendPort[®] Wall Shelf, model _____. Constructed of 18 gauge type 430, stainless steel. 1½" square edge with 30° kick on front, with 1½" upturn on rear and ends. Stainless steel mounting brackets have 3M VHT™ tape on one edge and are shipped loose to be installed in the field where needed.



Item No.:	_____
Project No.:	_____
S.I.S. No.:	_____

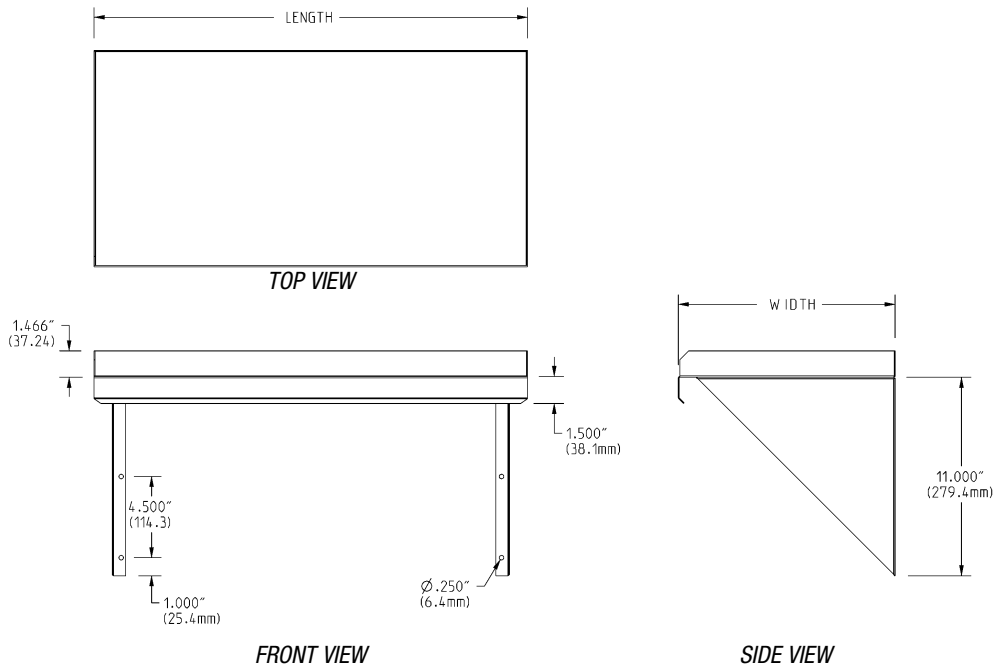
Table Accessories— Wall Shelves

MODELS:

- BPWS-1224** **BPWS-1248** **BPWS-1272**
 BPWS-1236 **BPWS-1260** **BPWS-1296**

Features

- 1½" (38mm) square edge with 30° kick on front.
- 1½" (38mm) upturn on rear and ends.
- Die-formed stainless steel mounting brackets have 3M VHT™ tape on one edge and are shipped loose to be installed in the field where needed.
- 18 gauge type 430 stainless steel polished to #4 finish.



model #	width		length		weight	
	in.	mm	in.	mm	lbs.	kg
BPWS1224	12"	305	24"	610	9	1.0
BPWS1236	12"	305	36"	914	12	5.4
BPWS1248	12"	305	48"	1219	15	6.8
BPWS1260	12"	305	60"	1524	17	7.7
BPWS1272	12"	305	72"	1829	21	9.5
BPWS1296	12"	305	96"	2438	26	11.8

