

# Fusion

GMSV 52"H Heated Service Case

Structural Concepts®

DELIVERING FRESH. ALWAYS.™

(Lengths do not include 1-1/8" end panels)

- **GMSV4H** 48-3/4"L x 43"D x 51-5/8"H
- **GMSV6H** 73-1/8"L x 43"D x 51-5/8"H
- **GMSV8H** 97-1/2"L x 43"D x 51-5/8"H

## Included

- One year parts & labor warranty
- Stainless steel rear exterior
- Vertical swing out front glass



GMSV6H

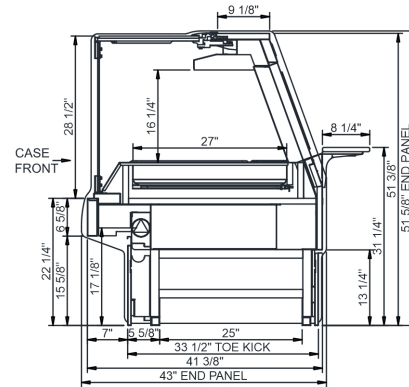
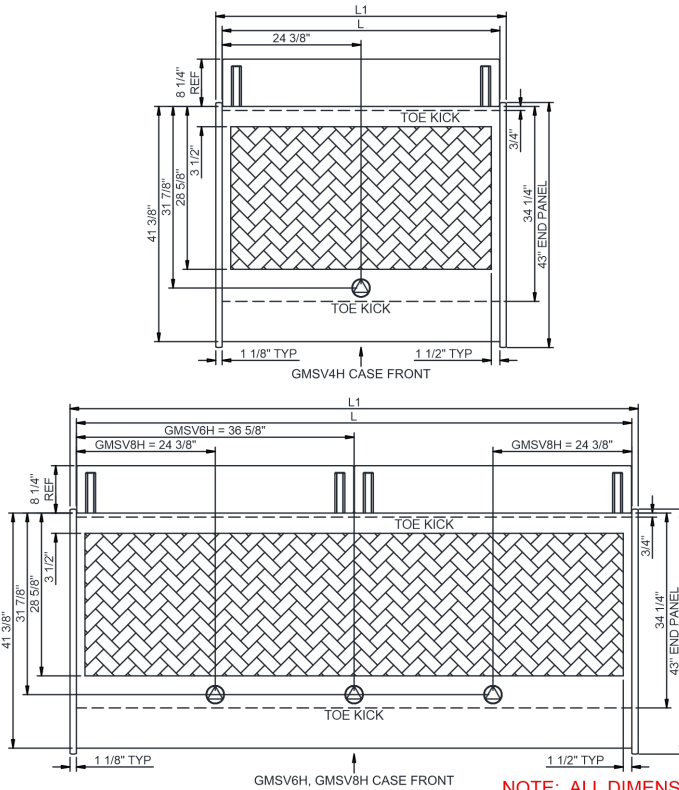
Specify	Standard Features	Additional Options
<b>EXTERIOR COLOR</b>	• Laminate (stock colors)	• Laminate (non-stock colors) • Powder coated (stock/non-stock colors) • Powder coated Silversan Black • Stainless steel
<b>INTERIOR COLOR</b>	• Stainless steel	
<b>LOWER FRONT PANEL COLOR</b>	• Powder coated Silversan Black	• Powder coated (stock/non-stock colors) • Stainless steel
<b>BASE SUPPORT</b>	• Rail system for shims	
<b>BUMPER FRONT</b>	• 1" Boston bumper (specify color)	• 1" Stainless steel plate rail bumper
<b>DISPLAY</b>	• 4"D Full pan with rear 1/3rd pan	
<b>END PANELS</b>	• Full w/stainless steel mirror interior	• Cutaway w/glass
<b>SCALE STAND</b>	• None	<sup>1</sup> • Scale stand w/ receptacle & CAT5 (specify location) • Scale stand w/ receptacle (specify location)
<b>REAR DOORS</b>	• Clear glass rear sliding doors	• Reflective glass rear sliding doors
<b>ELECTRICAL CONNECTION</b>	• Electrical leads (remote)	
<b>MISCELLANEOUS</b>		• Front glass lock • Rear door lock
<b>ACCESSORIES</b>		• Rear wrapping board, white Sanalite®

Option Notes: 1 - Separate circuit required

<b>Intended Environment:</b> Type I - Designed to operate in ambient conditions of 75°F with 55% relative humidity unless noted otherwise in system information below.		
<b>Zone</b>	<b>Intended Product To Be Displayed</b>	<b>Warmest Avg Prod Temp ° F</b>
1	Unpackaged heated product	160

**PLAN VIEW**

**SIDE VIEW**



NOTE: ALL DIMENSIONS APPROXIMATE

- ELECTRICAL JUNCTION BOX**  
(SUPPLIED WITH 6" LEADS OR POWER CORD).
- REFRIGERATION LINE CONNECTION.**
- SELF-CONTAINED CASE SERVICE ACCESS AREA.**
- REMOTE FLOOR SINK & UTILITIES ACCESS AREA.**
- DRY CASE SERVICE ACCESS AREA.**

Model Technical Specifications																
Model	L"	L1"	L2"	System Circuit Volts		Phs	Freq	Amps ***	Watts	Wires	NEMA Plug	SST	Conv. Rack RTUH	Para. Rack RTUH	Est Wt	
GMSV4H	48.75	51.00	.00	Heat (N/A)	Circuit #1	208	1	50-60	11.83	2,491	2+G	Leads Single	N/A	N/A	N/A	750
						240	1	50-60	13.60	3,289	2+G	Leads Single	N/A	N/A	N/A	
						208	3	50-60	7.97	2,491	3+G	Leads Single	N/A	N/A	N/A	
						240	3	50-60	9.15	3,289	3+G	Leads Single	N/A	N/A	N/A	
GMSV6H	73.13	75.38	.00	Heat (N/A)	Circuit #1	208	1	50-60	19.65	4,162	2+G	Leads Single	N/A	N/A	N/A	1,175
						240	1	50-60	22.60	5,493	2+G	Leads Single	N/A	N/A	N/A	
						208	3	50-60	15.44	4,162	3+G	Leads Single	N/A	N/A	N/A	
						240	3	50-60	17.80	5,493	3+G	Leads Single	N/A	N/A	N/A	
GMSV8H	97.50	99.75	.00	Heat (N/A)	Circuit #1	208	1	50-60	27.42	5,881	2+G	Leads Single	N/A	N/A	N/A	1,400
						240	1	50-60	31.55	7,745	2+G	Leads Single	N/A	N/A	N/A	
						208	3	50-60	27.42	5,881	3+G	Leads Single	N/A	N/A	N/A	
						240	3	50-60	31.55	7,745	3+G	Leads Single	N/A	N/A	N/A	

\*\*\* Does not include electric defrost on freezer models.

**Regulatory Approvals:**

All Models ETL Listed to UL 197  
ETL Listed to CAN/CSA 22.2 No. 109  
UL Sanitation to NSF Std 4



**Important Notes:**

- 1) ELECTRICAL NOTE: If GFCI is required, a GFCI breaker MUST be used in lieu of a GFCI receptacle.
- 2) 45" minimum door entry clearance required (without shipping skid).
- 3) Units must be shimmed during installation to ensure the unit is level and plumb.
- 4) Designed for dry heat.
- 5) Each well accommodates up to 4"D pans (not provided).

**⚠ WARNING:** This product can expose you to chemicals, including Urethane (Ethyl Carbamate), which are known to the State of California to cause cancer and birth defects or other reproductive harm. For more information go to [www.P65Warnings.ca.gov](http://www.P65Warnings.ca.gov).