

• **COU2757R**

27-1/2"L x 34-3/4"D x 57-7/8"H

### Included

- Breeze self-contained refrigeration
- Angled deck (n/a w/display steps)
- Casters
- Clear glass shelves, lighted (LED 3500K)
- Condensate pan (self-contained refrig. only)
- Curved single pane, fixed front glass
- Full end panel w/mirror interior
- Integrated average product temperature of 40°F or less
- LED 3500K top & shelf lights
- One year parts & labor; 5 year compressor warranty

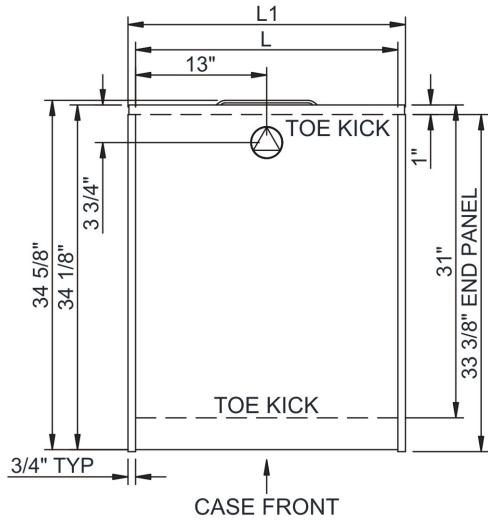


**COU2757R**

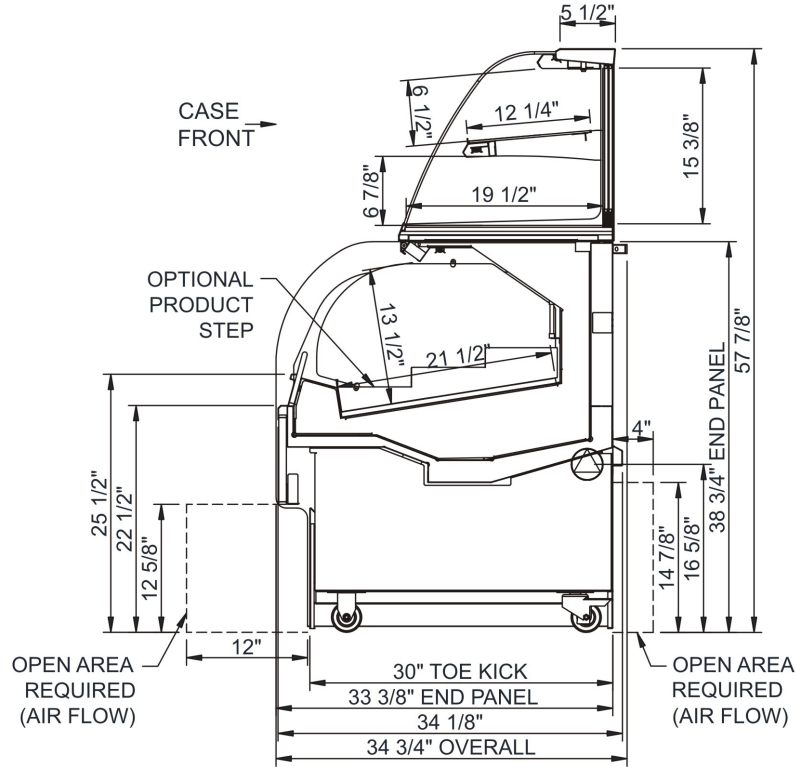
Specify	Standard Features	Additional Options
<b>EXTERIOR COLOR</b>	<ul style="list-style-type: none"> <li>• Laminate (stock colors)</li> </ul>	<ul style="list-style-type: none"> <li>• Laminate (non-stock colors)</li> <li>• Stainless steel</li> </ul>
<b>INTERIOR COLOR</b>	<ul style="list-style-type: none"> <li>• Powder coated Silversan Black</li> </ul>	<ul style="list-style-type: none"> <li>• Stainless steel</li> </ul>
<b>REAR DOORS</b>	<ul style="list-style-type: none"> <li>• Clear glass rear sliding doors w/o lock</li> </ul>	<ul style="list-style-type: none"> <li>• Reflective glass rear sliding doors w/o lock</li> </ul>
<b>ELECTRICAL CONNECTION</b>	<ul style="list-style-type: none"> <li>• 6' Straight blade power cord (self-cont.)</li> </ul>	<ul style="list-style-type: none"> <li>• 6' Locking power cord (self-cont.)</li> </ul>
<b>MISCELLANEOUS</b>		<ul style="list-style-type: none"> <li>• Rear door lock</li> <li>• Second year parts &amp; labor warranty (excludes compressor)</li> </ul>
<b>ACCESSORIES</b>		<ul style="list-style-type: none"> <li>• 2"H Display steps</li> <li>• Night curtain, retractable, non-locking</li> <li>• Removable wire security cover, locking</li> </ul>

<b>Intended Environment:</b> Type I - Designed to operate in ambient conditions of 75°F with 55% relative humidity unless noted otherwise in system information below.		
Zone	Intended Product To Be Displayed	Warmest Avg Prod Temp ° F
1	Packaged refrigerated products	40
2	Packaged non-refrigerated products	Ambient

PLAN VIEW



SIDE VIEW



**NOTE: ALL DIMENSIONS APPROXIMATE**

- ELECTRICAL JUNCTION BOX (SUPPLIED WITH 6" LEADS OR POWER CORD).
- REMOTE FLOOR SINK & UTILITIES ACCESS AREA.
- LOCATION OF DRAIN TUBE FOR REMOTE REF. ONLY (SUPPLIED WITH 3/4" OR 1 1/2" PVC TUBE).
- SELF-CONTAINED CASE SERVICE ACCESS AREA.
- REFRIGERATION LINE CONNECTION.
- DRY CASE SERVICE ACCESS AREA.

**Model Technical Specifications**

Model	L"	L1"	L2"	System Circuit Volts		Phs	Freq	Amps ***	Watts	Wires	NEMA Plug	SST	Conv. Rack RTU/H	Para. Rack RTU/H	Est Wt	
COU2757R	26.00	27.50	.00	Self-Contained (R513A)	Circuit #1	110-120	1	60	5.92	592	N/A	5-15P or L5-15P	N/A	N/A	N/A	800

\*\*\* Does not include electric defrost on freezer models.

**Regulatory Approvals:**

All Models  
 Accordance with AHRI Std 1200  
 ETL Listed to UL 471  
 ETL Listed to CAN/CSA 22.2 No. 120  
 ETL Sanitation to NSF/ANSI 7



In Accordance with  
**AHRI Std 1200**

**DOE 2017**  
Energy Efficiency  
Compliant

**Important Notes:**

- 1) ELECTRICAL NOTE: If GFCI is required, a GFCI breaker MUST be used in lieu of a GFCI receptacle
- 2) 35 1/2" Minimum door entry clearance required (Without shipping skid).
- 3) Compressor air intake from rear and out front panel at toe kick. Front panel cannot be blocked. Product must be cooled before being displayed within the case.

**⚠ WARNING:** This product can expose you to chemicals, including Urethane (Ethyl Carbamate), which are known to the State of California to cause cancer and birth defects or other reproductive harm. For more information go to [www.P65Warnings.ca.gov](http://www.P65Warnings.ca.gov).