



SPREADER CABINET



JTPR-12SD
with stainless steel
high shelf and casters



JTPR-18

MODEL NO.	DESCRIPTION
<input type="checkbox"/> JTPR-6	6" STAINLESS STEEL FRONT
<input type="checkbox"/> JTPR-12	12" OPEN CABINET
<input type="checkbox"/> JTPR-12SD	12" CABINET WITH DOOR
<input type="checkbox"/> JTPR-18	18" OPEN CABINET
<input type="checkbox"/> JTPR-18SD	18" CABINET WITH DOOR
<input type="checkbox"/> JTPR-24	24" OPEN CABINET
<input type="checkbox"/> JTPR-24SD	24" CABINET WITH DOOR
<input type="checkbox"/> JTPR-36	24" OPEN CABINET
<input type="checkbox"/> JTPR-36SD	36" CABINET WITH DOOR

STANDARD FEATURES

- 1-1/4" rear gas connection—see utility information for details
- 14 gauge stainless steel all welded body construction
- Stainless steel top, front, sides and stub back
- Stainless steel 6" plate shelf
- Stainless steel insulated double wall door(s)—SD Models Only
- Stainless steel cabinet interior and exterior
- Stainless steel adjustable 6" legs

AVAILABLE OPTIONS

- Stainless steel high riser
- Stainless steel double high riser
- Stainless steel high shelf
- Stainless steel double high shelf
- Stainless steel tubular high shelf
- Stainless steel tubular double high shelf
- Stainless steel intermediate shelf
- Common plate shelf with Item(s) Model(s) _____
- Cap and cover manifold. Left Right

ACCESSORIES

- 6" casters, front two locking (5" diameter wheel)
- 36" flex hose with quick disconnect (3/4" connection)
- 48" flex hose with quick disconnect (3/4" connection)
- 1-1/4" gas pressure regulator (specify gas type)
- 1" gas pressure regulator (specify gas type)

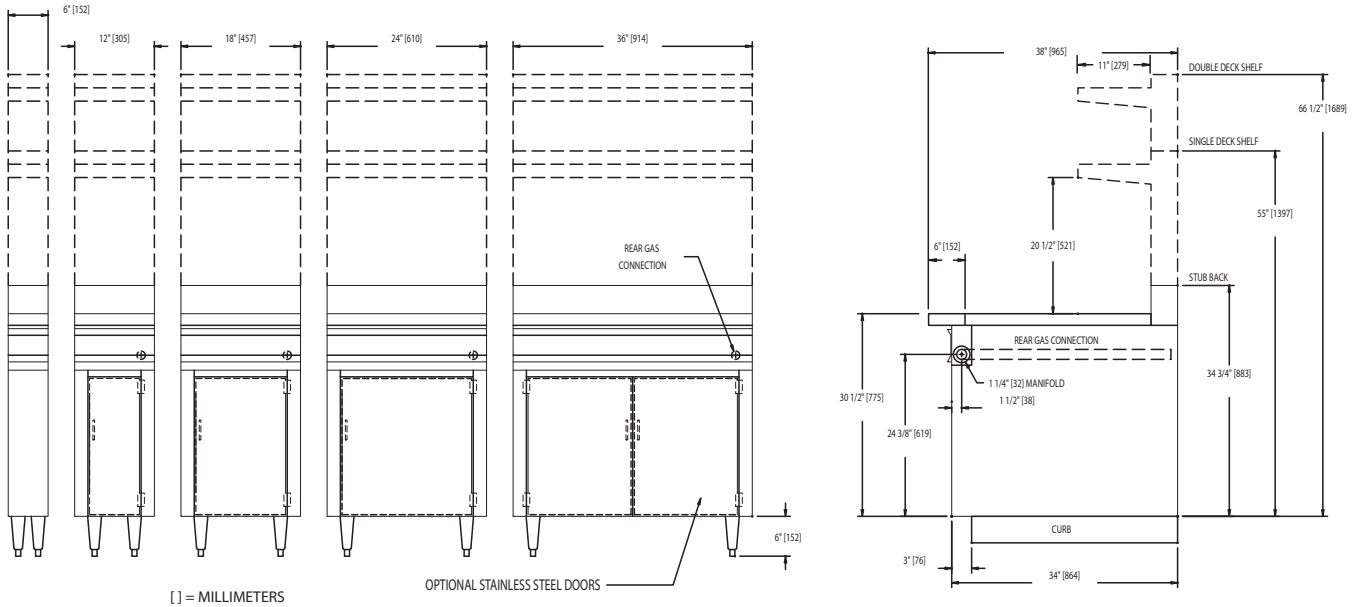


WWW.JADERANGE.COM

JADE RANGE, LLC., A MIDDLEBY COMPANY • 2650 Orbiter Street • Brea, CA 92821 • PHONE: 800-884-5233 FAX: 714-961-2550
Note: In line with their policy to continually improve products, Jade reserves the right to change materials and specifications without notice. PRINTED IN USA



SPREADER CABINET



MODEL	WIDTH	DEPTH	HEIGHT	APPX. SHP. WT.
JTPR-6	6"	38"	SEE DRAWING	105 LBS.
JTPR-12	12"	38"	SEE DRAWING	135 LBS.
JTPR-12SD	12"	38"	SEE DRAWING	145 LBS.
JTPR-18	18"	38"	SEE DRAWING	165 LBS.
JTPR-18SD	18"	38"	SEE DRAWING	180 LBS.
JTPR-24	24"	38"	SEE DRAWING	190 LBS.
JTPR-24SD	24"	38"	SEE DRAWING	205 LBS.
JTPR-36	36"	38"	SEE DRAWING	235 LBS.
JTPR-36SD	36"	38"	SEE DRAWING	265 LBS.

DESCRIPTION:

Spreader cabinet for heavy duty gas equipment. To be model #JTPR _____ manufactured by Jade Range. Spreader to have 14 gauge all welded steel construction, stainless steel top, front, sides, bottom and stub back. stainless steel insulated double wall door(s)—SD models only. Unit to have 6" stainless steel adjustable legs.

SPECIFY TYPE OF GAS WHEN ORDERING.

SPECIFY ALTITUDE WHEN ABOVE 2,000 ft.

UTILITY INFORMATION (GAS):

- 1-1/4" connection standard (see drawing for location)
- Required operating pressure:
 Natural Gas 5" W.C. minimum
 Propane Gas 10" W.C. minimum
 14" W.C. maximum

Note: This unit must be connected with the gas appliance regulator supplied.



WWW.JADERANGE.COM

JADE RANGE, LLC., A MIDDLEBY COMPANY • 2650 Orbiter Street • Brea, CA 92821 • PHONE: 800-884-5233 FAX: 714-961-2550
 Note: In line with their policy to continually improve products, Jade reserves the right to change materials and specifications without notice. PRINTED IN USA