

SOLID SHELVING

DESIGN: The solid steel design of these shelves is ideal for storage of small parts that might normally fall through wire shelves. Dual layer construction with double hemmed perimeter and marine edge ensures maximum strength while retaining spillage and excellent corrosion resistance.

CONSTRUCTION: All welded solid shelves are constructed of 18 gauge galvanized steel or 304 stainless steel.

FINISH:

Galvanized - is known as a hot-dipping process in which the steel is dipped in molten zinc. This extra layer adds corrosion resistance to the finalized product. Recommended to be used in any application in a dry storage environment. 1-year limited warranty.

Stainless Steel - 304 Stainless with an electro-polish finish represents the highest industry standard in the prevention of corrosion. This finish is highly effective for corrosive, high humidity or clean room environments. Lifetime warranty for 304 stainless steel electro-polish finish.

ADAPTABLE: By using various accessories, hundreds of shelving configurations become possible.

QUICK, EASY ASSEMBLY: Posts have a double groove visual guide feature every 8", circular grooves at 1" increments, and are numbered at 1" intervals. Tapered split sleeve snaps together around each post. Tapered openings in the shelf corners slide over the tapered split sleeves providing a positive lock. Shelf is assembled in minutes without the use of any special tools.

ADJUSTABLE: Shelves can be adjusted at 1" intervals along length of the post.

ACCESSIBILITY: Racks can be loaded/unloaded easily from all sides.

NSF APPROVED

SHIPS KD

18 GAUGE GALVANIZED STEEL

304 STAINLESS STEEL



Highest Quality, Lowest Price Guaranteed!

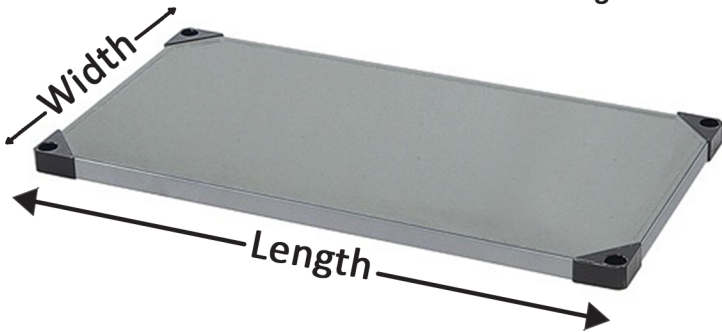
QUANTUM FOOD SERVICE

15800 NW 15TH AVENUE, MIAMI, FLORIDA 33169 TOLL-FREE: (888) 993-3370 FAX: (954) 369-2512

E-MAIL: SALES@QUANTUMFOODSERVICE.COM WWW.QUANTUMFOODSERVICE.COM

SOLID SHELVES

- **Plastic Split Sleeves** - are included with each shelf
Model No: WR-SS (4 Pairs)
- **Plastic Conductive Split Sleeves** - are available for conductive applications
Model No: WR-SSCO (4 Pairs)
- **Aluminum Split Sleeves** - are recommended for extreme mobile and conductive applications
Model No: ESD-SS (4 Pairs)
- **Load capacity (evenly distributed) per shelf**
Widths: 14" to 24"
Lengths: 600 Lbs. for 24" to 48"
400 Lbs. for 54" or longer



POSTS

- **Numbered grooved posts on 1" increments for quick assembly**

- **Post Leveler Insert & Leveling Bolt** - use to account for uneven floors, it adjusts up or down allowing height flexibility

Leveler Insert:
Model No: W-PLI
Leveling Bolt:
Model No: W-PLB

| POST H" | SHIP WGT | STAINLESS STEEL |
|---------|----------|-----------------|
| | | MODEL NO. |
| 6" | 1 lbs | P6S |
| 14" | 1 lbs | P14S |
| 34" | 2 lbs | P34S |
| 42" | 2 lbs | P42S |
| 54" | 3 lbs | P54S |
| 63" | 4 lbs | P63S |
| 74" | 4 lbs | P74S |
| 86" | 5 lbs | P86S |
| 96" | 6 lbs | P96S |

| SHELF W" x L" SHIP WGT | MODEL NO. | GALVANIZED STEEL | STAINLESS STEEL |
|---------------------------------|-----------|------------------|-----------------|
| | | MODEL NO. | MODEL NO. |
| 14" Deep - Solid Shelves | | | |
| 14" x 36" | 14 lbs | 1436SG | 1436SS |
| 14" x 42" | 15 lbs | 1442SG | 1442SS |
| 14" x 48" | 17 lbs | 1448SG | 1448SS |
| 14" x 54" | 20 lbs | 1454SG | 1454SS |
| 14" x 60" | 22 lbs | 1460SG | 1460SS |
| 14" x 72" | 26 lbs | 1472SG | 1472SS |
| 18" Deep - Solid Shelves | | | |
| 18" x 24" | 11 lbs | 1824SG | 1824SS |
| 18" x 30" | 14 lbs | 1830SG | 1830SS |
| 18" x 36" | 16 lbs | 1836SG | 1836SS |
| 18" x 42" | 18 lbs | 1842SG | 1842SS |
| 18" x 48" | 20 lbs | 1848SG | 1848SS |
| 18" x 54" | 22 lbs | 1854SG | 1854SS |
| 18" x 60" | 24 lbs | 1860SG | 1860SS |
| 18" x 72" | 27 lbs | 1872SG | 1872SS |
| 21" Deep - Solid Shelves | | | |
| 21" x 24" | 13 lbs | 2124SG | 2124SS |
| 21" x 30" | 15 lbs | 2130SG | 2130SS |
| 21" x 36" | 18 lbs | 2136SG | 2136SS |
| 21" x 42" | 21 lbs | 2142SG | 2142SS |
| 21" x 48" | 23 lbs | 2148SG | 2148SS |
| 21" x 54" | 25 lbs | 2154SG | 2154SS |
| 21" x 60" | 28 lbs | 2160SG | 2160SS |
| 21" x 72" | 30 lbs | 2172SG | 2172SS |
| 24" Deep - Solid Shelves | | | |
| 24" x 24" | 15 lbs | 2424SG | 2424SS |
| 24" x 30" | 17 lbs | 2430SG | 2430SS |
| 24" x 36" | 19 lbs | 2436SG | 2436SS |
| 24" x 42" | 22 lbs | 2442SG | 2442SS |
| 24" x 48" | 24 lbs | 2448SG | 2448SS |
| 24" x 54" | 26 lbs | 2454SG | 2454SS |
| 24" x 60" | 31 lbs | 2460SG | 2460SS |
| 24" x 72" | 34 lbs | 2472SG | 2472SS |



Split Sleeve



Aluminum Split Sleeve



Leveler Insert & Leveling Bolt

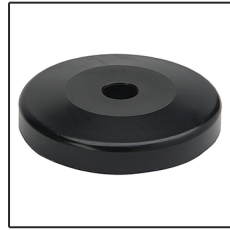
Highest Quality, Lowest Price Guaranteed!

QUANTUM FOOD SERVICE

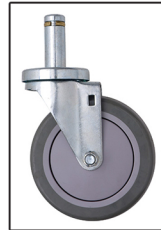
15800 NW 15TH AVENUE, MIAMI, FLORIDA 33169 TOLL-FREE: (888) 993-3370 FAX: (954) 369-2512

E-MAIL: SALES@QUANTUMFOODSERVICE.COM WWW.QUANTUMFOODSERVICE.COM

SHELVING UNITS



DB
Donut Bumper
Non-marking donut bumper used to protect walls and help cushion impact. Sold individually. Measures 3" diameter.



WR-00H
Polyurethane Casters
Sold as a set of 4 casters, 2 with brake. Measures 5" x 1-1/4".



QSMC
Shelf Clamp
Shelf Clamps eliminates 2 posts per shelving section. Sold individually. *Finish: Aluminum.*



Starter Kits come complete with 4 shelves and 4 posts. Additional shelves may be purchased separately.

Additional Add-On Kits allows you to expand your Starter Kit by sharing a set of posts. Configuration options include side to side, back to back and right angles (*L-Shape*). Add-On units come complete with 4 shelves, 2 posts and 8 shelf clamps (*2 Shelf Clamp must be used for each shelf*). Additional shelves and posts may be purchased separately. Units with Add-On Kits cannot be made mobile.

| 18 GAUGE GALVANIZED STEEL | | | | | |
|---------------------------|----------|-------------|------------------|----------|-------------|
| 74"H STARTER UNIT | | | 74"H ADD-ON UNIT | | |
| DIMENSIONS | SHIP WGT | MODEL NO. | DIMENSIONS | SHIP WGT | MODEL NO. |
| 14" x 36" x 74" | 72 lbs | WR74-1436SG | 14" x 36" x 74" | 67 lbs | AD74-1436SG |
| 14" x 42" x 74" | 76 lbs | WR74-1442SG | 14" x 42" x 74" | 71 lbs | AD74-1442SG |
| 14" x 48" x 74" | 84 lbs | WR74-1448SG | 14" x 48" x 74" | 79 lbs | AD74-1448SG |
| 14" x 54" x 74" | 96 lbs | WR74-1454SG | 14" x 54" x 74" | 91 lbs | AD74-1454SG |
| 14" x 60" x 74" | 104 lbs | WR74-1460SG | 14" x 60" x 74" | 99 lbs | AD74-1460SG |
| 14" x 72" x 74" | 120 lbs | WR74-1472SG | 14" x 72" x 74" | 115 lbs | AD74-1472SG |
| 18" x 24" x 74" | 60 lbs | WR74-1824SG | 18" x 24" x 74" | 55 lbs | AD74-1824SG |
| 18" x 30" x 74" | 72 lbs | WR74-1830SG | 18" x 30" x 74" | 67 lbs | AD74-1830SG |
| 18" x 36" x 74" | 80 lbs | WR74-1836SG | 18" x 36" x 74" | 75 lbs | AD74-1836SG |
| 18" x 42" x 74" | 88 lbs | WR74-1842SG | 18" x 42" x 74" | 83 lbs | AD74-1842SG |
| 18" x 48" x 74" | 96 lbs | WR74-1848SG | 18" x 48" x 74" | 91 lbs | AD74-1848SG |
| 18" x 54" x 74" | 104 lbs | WR74-1854SG | 18" x 54" x 74" | 99 lbs | AD74-1854SG |
| 18" x 60" x 74" | 112 lbs | WR74-1860SG | 18" x 60" x 74" | 107 lbs | AD74-1860SG |
| 18" x 72" x 74" | 124 lbs | WR74-1872SG | 18" x 72" x 74" | 119 lbs | AD74-1872SG |
| 21" x 24" x 74" | 68 lbs | WR74-2124SG | 21" x 24" x 74" | 63 lbs | AD74-2124SG |
| 21" x 30" x 74" | 76 lbs | WR74-2130SG | 21" x 30" x 74" | 71 lbs | AD74-2130SG |
| 21" x 36" x 74" | 88 lbs | WR74-2136SG | 21" x 36" x 74" | 83 lbs | AD74-2136SG |
| 21" x 42" x 74" | 100 lbs | WR74-2142SG | 21" x 42" x 74" | 95 lbs | AD74-2142SG |
| 21" x 48" x 74" | 108 lbs | WR74-2148SG | 21" x 48" x 74" | 103 lbs | AD74-2148SG |
| 21" x 54" x 74" | 116 lbs | WR74-2154SG | 21" x 54" x 74" | 111 lbs | AD74-2154SG |
| 21" x 60" x 74" | 128 lbs | WR74-2160SG | 21" x 60" x 74" | 123 lbs | AD74-2160SG |
| 21" x 72" x 74" | 136 lbs | WR74-2172SG | 21" x 72" x 74" | 131 lbs | AD74-2172SG |
| 24" x 24" x 74" | 76 lbs | WR74-2424SG | 24" x 24" x 74" | 71 lbs | AD74-2424SG |
| 24" x 30" x 74" | 84 lbs | WR74-2430SG | 24" x 30" x 74" | 79 lbs | AD74-2430SG |
| 24" x 36" x 74" | 92 lbs | WR74-2436SG | 24" x 36" x 74" | 87 lbs | AD74-2436SG |
| 24" x 42" x 74" | 104 lbs | WR74-2442SG | 24" x 42" x 74" | 99 lbs | AD74-2442SG |
| 24" x 48" x 74" | 112 lbs | WR74-2448SG | 24" x 48" x 74" | 107 lbs | AD74-2448SG |
| 24" x 54" x 74" | 128 lbs | WR74-2454SG | 24" x 54" x 74" | 123 lbs | AD74-2454SG |
| 24" x 60" x 74" | 140 lbs | WR74-2460SG | 24" x 60" x 74" | 135 lbs | AD74-2460SG |
| 24" x 72" x 74" | 152 lbs | WR74-2472SG | 24" x 72" x 74" | 147 lbs | AD74-2472SG |

| 304 STAINLESS STEEL | | | | | |
|---------------------|----------|----------------|------------------|----------|------------------|
| 74"H STARTER UNIT | | | 74"H ADD-ON UNIT | | |
| DIMENSIONS | SHIP WGT | MODEL NO. | DIMENSIONS | SHIP WGT | MODEL NO. |
| 14" x 36" x 74" | 72 lbs | WRS4-74-1436SS | 14" x 36" x 74" | 67 lbs | WRSAD4-74-1436SS |
| 14" x 42" x 74" | 76 lbs | WRS4-74-1442SS | 14" x 42" x 74" | 71 lbs | WRSAD4-74-1442SS |
| 14" x 48" x 74" | 84 lbs | WRS4-74-1448SS | 14" x 48" x 74" | 79 lbs | WRSAD4-74-1448SS |
| 14" x 54" x 74" | 96 lbs | WRS4-74-1454SS | 14" x 54" x 74" | 91 lbs | WRSAD4-74-1454SS |
| 14" x 60" x 74" | 104 lbs | WRS4-74-1460SS | 14" x 60" x 74" | 99 lbs | WRSAD4-74-1460SS |
| 14" x 72" x 74" | 120 lbs | WRS4-74-1472SS | 14" x 72" x 74" | 115 lbs | WRSAD4-74-1472SS |
| 18" x 24" x 74" | 60 lbs | WRS4-74-1824SS | 18" x 24" x 74" | 55 lbs | WRSAD4-74-1824SS |
| 18" x 30" x 74" | 72 lbs | WRS4-74-1830SS | 18" x 30" x 74" | 67 lbs | WRSAD4-74-1830SS |
| 18" x 36" x 74" | 80 lbs | WRS4-74-1836SS | 18" x 36" x 74" | 75 lbs | WRSAD4-74-1836SS |
| 18" x 42" x 74" | 88 lbs | WRS4-74-1842SS | 18" x 42" x 74" | 83 lbs | WRSAD4-74-1842SS |
| 18" x 48" x 74" | 96 lbs | WRS4-74-1848SS | 18" x 48" x 74" | 91 lbs | WRSAD4-74-1848SS |
| 18" x 54" x 74" | 104 lbs | WRS4-74-1854SS | 18" x 54" x 74" | 99 lbs | WRSAD4-74-1854SS |
| 18" x 60" x 74" | 112 lbs | WRS4-74-1860SS | 18" x 60" x 74" | 107 lbs | WRSAD4-74-1860SS |
| 18" x 72" x 74" | 124 lbs | WRS4-74-1872SS | 18" x 72" x 74" | 119 lbs | WRSAD4-74-1872SS |
| 21" x 24" x 74" | 68 lbs | WRS4-74-2124SS | 21" x 24" x 74" | 63 lbs | WRSAD4-74-2124SS |
| 21" x 30" x 74" | 76 lbs | WRS4-74-2130SS | 21" x 30" x 74" | 71 lbs | WRSAD4-74-2130SS |
| 21" x 36" x 74" | 88 lbs | WRS4-74-2136SS | 21" x 36" x 74" | 83 lbs | WRSAD4-74-2136SS |
| 21" x 42" x 74" | 100 lbs | WRS4-74-2142SS | 21" x 42" x 74" | 95 lbs | WRSAD4-74-2142SS |
| 21" x 48" x 74" | 108 lbs | WRS4-74-2148SS | 21" x 48" x 74" | 103 lbs | WRSAD4-74-2148SS |
| 21" x 54" x 74" | 116 lbs | WRS4-74-2154SS | 21" x 54" x 74" | 111 lbs | WRSAD4-74-2154SS |
| 21" x 60" x 74" | 128 lbs | WRS4-74-2160SS | 21" x 60" x 74" | 123 lbs | WRSAD4-74-2160SS |
| 21" x 72" x 74" | 136 lbs | WRS4-74-2172SS | 21" x 72" x 74" | 131 lbs | WRSAD4-74-2172SS |
| 24" x 24" x 74" | 76 lbs | WRS4-74-2424SS | 24" x 24" x 74" | 71 lbs | WRSAD4-74-2424SS |
| 24" x 30" x 74" | 84 lbs | WRS4-74-2430SS | 24" x 30" x 74" | 79 lbs | WRSAD4-74-2430SS |
| 24" x 36" x 74" | 92 lbs | WRS4-74-2436SS | 24" x 36" x 74" | 87 lbs | WRSAD4-74-2436SS |
| 24" x 42" x 74" | 104 lbs | WRS4-74-2442SS | 24" x 42" x 74" | 99 lbs | WRSAD4-74-2442SS |
| 24" x 48" x 74" | 112 lbs | WRS4-74-2448SS | 24" x 48" x 74" | 107 lbs | WRSAD4-74-2448SS |
| 24" x 54" x 74" | 128 lbs | WRS4-74-2454SS | 24" x 54" x 74" | 123 lbs | WRSAD4-74-2454SS |
| 24" x 60" x 74" | 140 lbs | WRS4-74-2460SS | 24" x 60" x 74" | 135 lbs | WRSAD4-74-2460SS |
| 24" x 72" x 74" | 152 lbs | WRS4-74-2472SS | 24" x 72" x 74" | 147 lbs | WRSAD4-74-2472SS |

Highest Quality, Lowest Price Guaranteed!

QUANTUM FOOD SERVICE

15800 NW 15TH AVENUE, MIAMI, FLORIDA 33169 TOLL-FREE: (888) 993-3370 FAX: (954) 369-2512

E-MAIL: SALES@QUANTUMFOODSERVICE.COM WWW.QUANTUMFOODSERVICE.COM