



Profit from the Eagle Advantage®

Specification Sheet

Item No.: _____
 Project No.: _____
 S.I.S. No.: _____

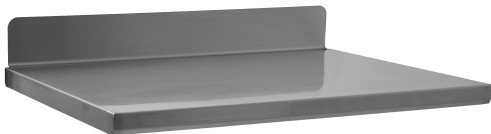
Catalog Specification Sheet No.

EG01.63

Q-LEVER® Accessories



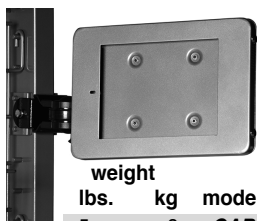
description	weight		model #
	lbs.	kg	
one 6" (152mm)-tall drawer	28	13	QDRAWER-1
two 3" (76mm)-tall drawers	30	14	QDRAWER-2



length	24" (610mm)-WIDE			30" (762mm)-WIDE		
	in.	mm	weight lbs. kg	in.	mm	weight lbs. kg
24"	610	26	12	32	15	Q3024T
30"	762	32	15	35	16	Q3030T
36"	914	38	17	41	19	Q3036T
42"	1067	46	21	47	21	Q3042T
48"	1219	50	23	53	24	Q3048T
54"	1372	56	25	59	27	Q3054T
60"	1524	61	28	65	30	Q3060T
72"	1828	71	32	74	34	Q3072T



length	weight		model #	length	weight		model #	
	in.	mm			lbs.	kg		in.
24"	610	4	2	48"	1219	16	7	Q48VO
30"	762	7	3	54"	1372	19	9	Q54VO
36"	914	9	4	60"	1524	22	10	Q60VO
42"	1067	13	6	72"	1828	24	11	Q72VO



weight			model #
lbs.	kg		
5	2		QARM

Q-LEVER® Accessories

Drawers

- Stainless steel construction.
- Choice of two 3" (76mm) tall drawers, or one 6" tall drawer.
- Screws into existing holes in underside of Q-LEVER® workstation top.
- Precision steel ball bearing drawer slides for medium-duty applications.
- Drawer profile features an easy to operate disconnect finger release trigger.
- Load capacity is 100 lbs. (45 kg).

Tabletops

- Heavy gauge polished stainless steel construction.
- 4½" (114mm) backsplash.
- Square edges turned down 90°, with 30° kick in the front.
- Reinforced with hat channel construction underneath.
- Channel construction provides holes to accept drawers.
- Tabletops are removable.

Overhead Lights

- Overhead light shelf is powder-coated Valu-Master® gray.
- Dimmable light fixture is powder white.
- Built-in ON/OFF switch with a high/low output option.
- Color temp = Warm White
- Power cord is 78" (1981mm) in length.
- Adjustable on Q-LEVER® uprights.

Flat Panel Monitor Arm

- Plated powder-coated black.
- Pivots left-to-right, adjustable on Q-LEVER® uprights, can be mounted on either side of upright.
- Universal VESA mount—100 x 100mm and 75 x 75mm hole pattern—accepts all flat pattern monitors 10" to 30".
- Has internal area for internal cable management for neatness.
- Weight capacity is 14 lbs. (6.4 kg).

All accessories on this spec sheet are only for Eagle's patented Q-LEVER® Shelving Units and Workstations (patent #10,159,339).

EAGLE GROUP

100 Industrial Boulevard
 Clayton, DE 19938-8903 USA

Phone: 302-653-3000 • 800-441-8440

Fax: 302-653-2065

www.eaglegrp.com • www.eaglemhc.com

For custom configuration or fabrication needs, contact our SpecFAB® Division.

Phone: 302-653-3000 • Fax: 302-653-2065 • e-mail: quotes@eaglegrp.com



EG01.63 Rev. 06/22

Spec sheets available for viewing, printing or downloading from our online literature library at www.eaglegrp.com



Profit from the Eagle Advantage®

Item No.: _____
 Project No.: _____
 S.I.S. No.: _____

Q-LEVER® Accessories

Power Strips

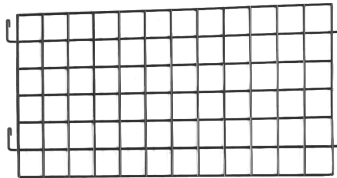
- Power strip is powder-coated black, mount is powder-coated Valu-Master® gray.
- 120-volt, NEMA 5-15P.
- Outlets are placed at right angle to accommodate bulky transformers.
- Comes with a 15' AC power cord.
- Lighted power switch confirms power ON/OFF status.
- Snap-in switch guard prevents accidental turnoff.
- Uses a 15-amp circuit breaker.
- Adjustable on Q-LEVER® uprights.



length in. mm	weight lbs. kg	model #	length in. mm	weight lbs. kg	model #
24" 610	9 4	Q24VP	48" 1219	13 6	Q48VP
30" 762	10 5	Q30VP	54" 1372	14 6	Q54VP
36" 914	11 5	Q36VP	60" 1524	15 7	Q60VP
42" 1067	12 5	Q42VP	72" 1828	17 8	Q72VP

Wall Grids

- Wires are 2-gauge mild steel, crisscrossed to create a 3" x 3" mesh.
- Easily hooks onto uprights without the need for tools.
- Holds wall mat accessories.
- Valu-Master® gray epoxy finish.



height x length in. mm	weight lbs. kg	model #
18" x 36" 457 x 914	7 3	Q1836VW
18" x 48" 457 x 1219	11 5	Q1848VW
18" x 60" 457 x 1524	15 7	Q1860VW
30" x 36" 762 x 914	11 5	Q3036VW
30" x 48" 762 x 1219	15 7	Q3048VW

Hanger Rails

- Easily hooks onto uprights.
- Accommodates all accessories.
- Can be used as a backstop.
- Valu-Master® gray epoxy finish.



length in. mm	weight lbs. kg	model #	length in. mm	weight lbs. kg	model #
24" 610	3 1	Q24VH	48" 1219	6 3	Q48VH
30" 762	3 1	Q30VH	54" 1372	7 3	Q54VH
36" 914	4 2	Q36VH	60" 1524	8 4	Q60VH
42" 1067	5 2	Q42VH	72" 1828	10 5	Q72VH

Supply Bins

- Made of durable polypropylene, providing longlasting years of service.
- Integral molded slots accept ID labels.



color	width x length x height		qty	weight		model #
	in.	mm		lbs.	kg	
blue	5½" x 10½" x 5"	140 x 276 x 127	12	12	6	A203877
blue	11" x 10½" x 5"	279 x 276 x 127	6	9	4	A203879
blue	8¼" x 14¼" x 7"	210 x 375 x 178	12	22	10	A203881
blue	16½" x 14¼" x 7"	419 x 375 x 178	6	18	8	A203883

Storage Baskets

- Easily attaches to hanger rail or side of wire shelf.
- Valu-Master® gray epoxy finish.



width x length x height in. mm	weights		model #	
	lbs.	kg		
5" x 13½" x 7"	127 x 340 x 178	3	1	WB-V
7½" x 17½" x 5"	191 x 441 x 127	5	2	WB-M-V
7½" x 17½" x 10"	191 x 441 x 254	6	3	WB-L-V

All accessories on this spec sheet are only for Eagle's patented Q-LEVER® Shelving Units and Workstations (patent #10,159,339).

EAGLE GROUP

100 Industrial Boulevard, Clayton, DE 19938-8903 USA
 Phone: 302-653-3000 or 800-441-8440 • Fax: 302-653-2065
 www.eaglegrp.com • www.eaglemhc.com

Printed in U.S.A.
 ©2022 by Eagle Group
 Rev. 06/22

Spec sheets available for viewing, printing or downloading from our online literature library at www.eaglegrp.com

Although every attempt has been made to ensure the accuracy of the information provided, we cannot be held responsible for typographical or printing errors. Information and specifications are subject to change without notice. Please confirm at time of order.