

ITEM NO. _____ PROJECT _____ QUANTITY _____

36" CRUISE LINE BROILERS

MODEL:

CLB36 SERIES



Model CLB36C-2 shown

MARINE SHORT/BID SPECIFICATION

Broiler shall be a LANG Manufacturing Marine Model CLB36 _____
[Specify one]:

-1-440, a single countertop broiler

C-2-440, a double broiler with open cabinet base

S-2-440, a double broiler with oven base

MARINE CONSTRUCTION FEATURES

- 304 stainless steel throughout
- Each broiler section shall be controlled with two (2), front and rear HI - LO switches.
- Oven is equipped with one heavy duty oven rack and rack slide support. Oven rack assembly is easily removable from oven cavity to ease cleaning. Oven is large enough to hold one 18" x 26" bun pan.
- Standard finish on all broilers with ovens or cabinet base shall be of type 304 18-8, non-magnetic 304 stainless steel.
- Adjustable bolt-down legs standard.
- Radiant rod heating units are enclosed tubular type with incoloy sheath.
- Broiler rack shall be counter balanced with adjustable height, roll out, and removable drip tray. Rack has option of 5 levels.
- Chimney atop upper unit helps cool control panels for both broiler units when double stacked. Chimney is constructed in such a way to keep water out.
- Watertight control panel with settings etched into metal.

MARINE PRODUCT WARRANTY

One year, parts & labor [Labor in U.S. only]

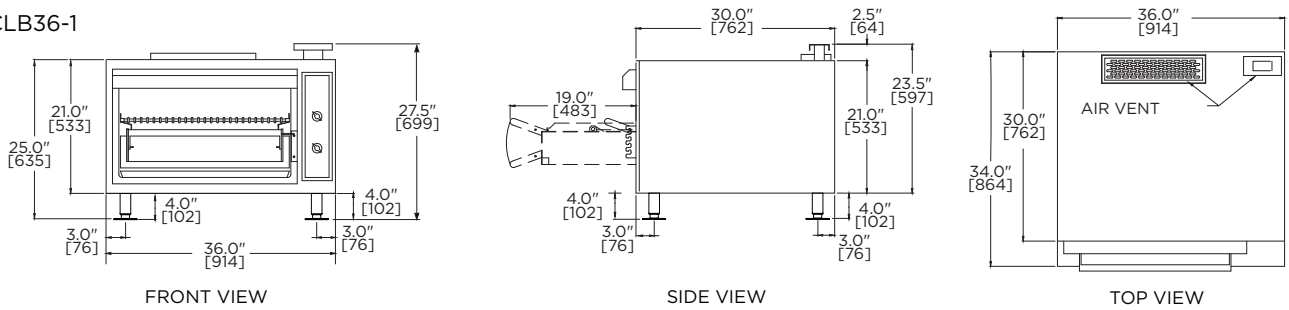
36" Electric Range with Standard Oven Base *Marine Models

INSTALLATION REQUIREMENTS

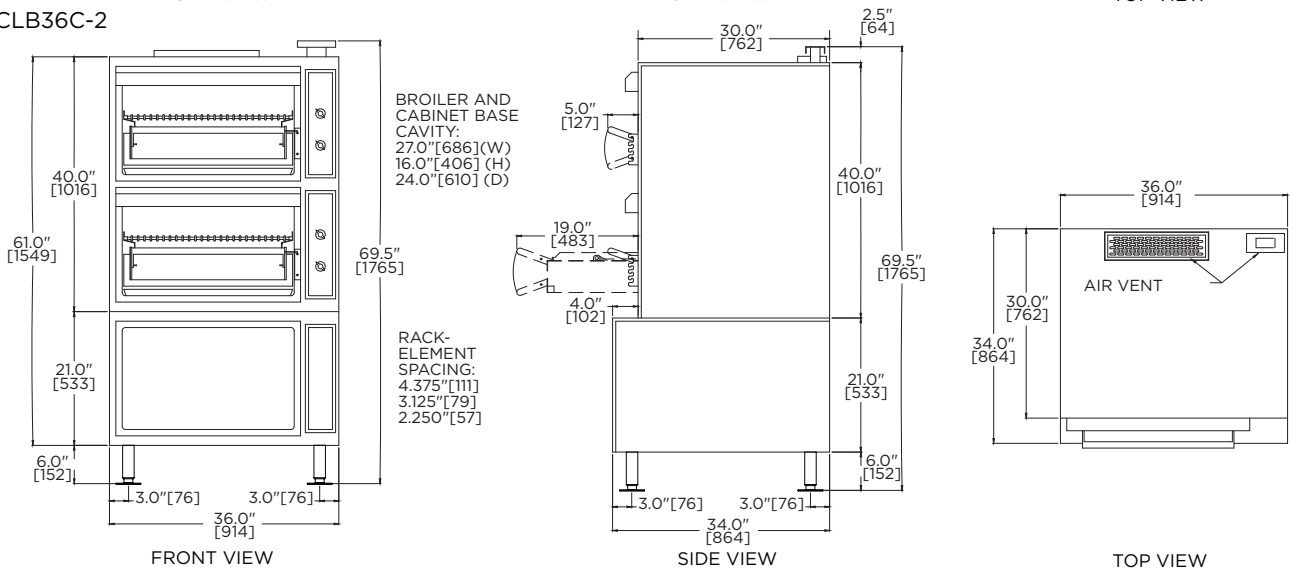
Standard 440V/480V 3-Phase electrical connection

Consult local and marine codes

MODEL CLB36-1



MODEL CLB36C-2



SK3170 REV - (05-23)

Model	Height x Width x Depth (with standard legs)	Clearance from combustable surface	Weight			Freight Class
			Shipping			
CLB36-1	27.5" x 36.0" x 30.0" 699mm x 914mm x 762mm	Sides: 14" (356mm) Back: 4" (100mm)	365 lbs. 166 kg			85
CLB36C	69.5" x 36.0" x 34.0" 1765mm x 914mm x 864mm	Sides: 14" (356mm) Back: 4" (100mm)	780 lbs. 354 kg			85
CLB36S	69.5" x 36.0" x 34.0" 1765mm x 914mm x 864mm	Sides: 14" (356mm) Back: 4" (100mm)	900 lbs. 408 kg			85
Model	Volts AC - Hz	Total kW	Nominal Amps Per Line			
			L1	L2	L3	
CLB36-1	440 - 50/60	12.0	23.6	13.6	13.6	
CLB36C	440 - 50/60	24.0	35.4	35.4	23.6	
CLB36S	440 - 50/60	29.0	35.4	45.3	33.5	

Due to continuous improvements, specifications subject to change without notice

