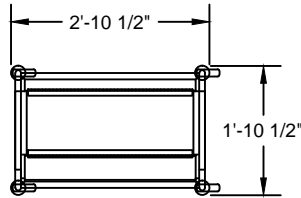
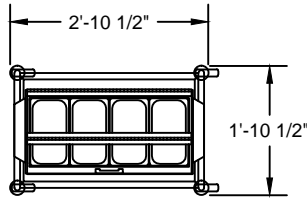


## Tray & Silver Caddys

Mobile Units with Pan-Type Silverware Dispensers  
and Counter Top Units


**T-301**

Capacity:  
40 Dozen Cutlery Pieces  
190 Trays up to 15" x 20"  
Height : 3' 8"


**T-303**

Capacity:  
80 Dozen Cutlery Pieces  
190 Trays up to 15" x 20"  
Height: 4' 2-1/4"

### Mobile Unit General Specifications

Tray & Silver Caddy to be Caddy Corporation model T-\_\_\_\_\_.

Frame to be of 1" O.D. 16 gauge stainless steel. Shelf to be 8" above the floor, of 18 gauge stainless steel with raised rounded edges on all sides, flanged down to form a 1-1/2" wide channel. Shelf corners shaped to fit contour of tubular frame and continuously welded to each leg at all contact points, which eliminates unsanitary crevices. Casters to be 4" diameter heavy-duty swivel type with 3/4" stems and polyurethane tires. Housing for cutlery receptacles to be of 18 gauge stainless steel with 16 gauge stainless steel end enclosures and supports of all welded construction.

#### T-301 specifications:

Cutlery housing fitted with double folding covers of fiberglass reinforced plastic with 18 gauge stainless steel hinges. Unit to be furnished with four removable pans. Pans to be seamless 304 type stainless with No. 4 finish. Each pan to measure 11-1/2" x 6" x 4" deep.

#### T-303 specifications:

Cutlery housing to have front and back folding covers of fiberglass reinforced plastic with 18 gauge stainless steel hinges. Unit to be furnished with eight removable pans. Pans to be seamless 304 type stainless with No. 4 finish. Each pan to measure 11-1/2" x 6" x 4" deep.

### Counter Top General Specifications

Counter Top Cutlery Dispenser to be Caddy Corporation model T-\_\_\_\_\_. Unit to be 20 gauge stainless steel with 16 gauge stainless steel end enclosures and supports of all welded construction and set on non-slip rubber feet.


**T-400**

Capacity:  
10 Cutlery Cylinders

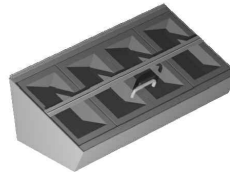
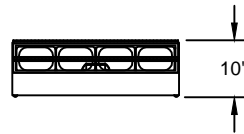
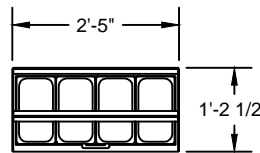
#### T-400 specifications:

Sloped top provided with ten die-stamped reinforced openings for standard perforated plastic cutlery cylinders.

Unit to be provided with the following accessories:

#### Accessories

- ACC-49\*** - Perforated plastic cutlery cylinders. Approximate capacity per cylinder: 48 knives, 36 forks, or 40 spoons.



#### T-320 specifications:

Unit to be fitted with double folding covers of fiberglass reinforced plastic with 18 gauge stainless steel hinges. Unit to be furnished with four removable pans. Pans to be seamless 304 type stainless with No. 4 finish. Each pan to measure 11-1/2" x 6" x 4" deep.

**T-320**

Capacity:  
40 Dozen Cutlery Pieces

**CADDY CORPORATION**  
509 Sharptown Road P.O. Box 345  
Bridgeport, NJ 08014-0345  
Tel: 856-467-4222 Fax: 856-467-5511  
internet: www.caddycorp.com

\* Specify quantity required