

APPLICATION:

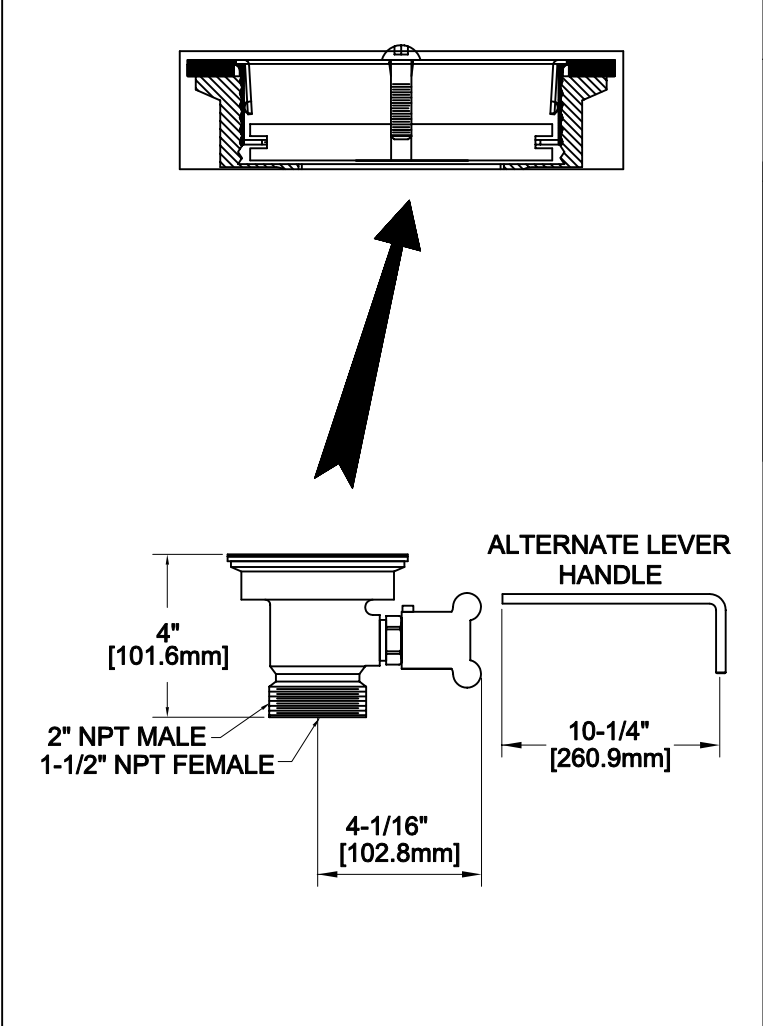
JOB NAME:

QUANTITY: ITEM NO.

PRODUCT NAME:

DrainKing WASTE VALVE

SPECIAL CONFIGURATION
CHECK BASE MODEL AND OPTIONS



MODEL:

22365 W/ VR FLAT STRAINER & KNOB

OPTIONS OR MODIFICATIONS:

OTHER _____

- FEATURES:
- * DUAL TEFLON SEALS
 - * STAINLESS STEEL BALL
 - * CAST RED BRASS BODY
 - * STAINLESS STEEL CLAMPING RING
 - * "CLEAR THROUGH" OPENING, NO NEED TO DISASSEMBLE IF SNAKING IS REQUIRED
 - * INDUSTRY STANDARD "SEALING" ANGLE - FITS FLUSH TO STANDARD STAINLESS STEEL SINKS
 - * VANDAL RESISTANT STAINLESS STEEL FLAT STRAINER
 - * VANDAL RESISTANT KNOB
 - * 1/4 TURN FULLY OPENS AND CLOSES VALVE
 - * SUPPLIED WITH:
ALTERNATE LEVER HANDLE

DRAIN RATE:

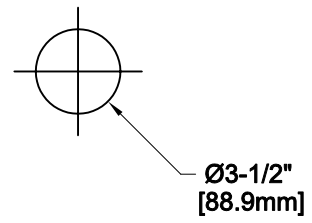
- * 12 GPM

SHIPPING WEIGHT

- * 5.0 LBS

ROUGH-IN:

DRAIN:



FISHER MANUFACTURING COMPANY

TOLL FREE: 800-421-6162 - FAX: 800-832-8238

information@fisher-mfg.com - www.fisher-mfg.com