



The Signature of Quality

FEDERAL INDUSTRIES

A Standex Company

215 Federal Avenue  
Belleville, Wisconsin 53508-9201

Phone: 800-356-4206

Fax: 608-424-3234

Email: Geninfo@Federalind.com

Website: Federalind.com

Project Name: \_\_\_\_\_

Item #: \_\_\_\_\_

Model #: \_\_\_\_\_ Qty: \_\_\_\_\_

Approval: \_\_\_\_\_

AIA #

SIS #

High-Profile Self-Serve Refrigerated Milk Merchandiser 78"H X 40"D X 50"W

Designed for schools to enhance ease of merchandising for K-12 grades while also accommodating sales of other items for higher grades in one attractive package



Shown with optional rear sliding doors and roll down security cover

OPTIONAL ACCESSORIES

- Special External Laminate Finish
- Black Interior (Including Shelving)
- Stainless Steel Exterior Finish
- Stainless Steel Interior
- Additional Lighted LED Shelf (If Using Single Layer Of Milk Crates)

- Additional Shelf Depths
- Roll-down Security Cover - white
- Removable Security Cover
- Reflective End Glass
- Graphic wrap
- Sliding Rear Access Doors (Clear or Reflective)
- Rear door locks

\*Additional options available on the website and price list.



WARRANTY\*  
One year Parts and Labor  
2nd thru 5th year part only  
service compressor  
(U.S.A. and Canada)

Note: Information is subject to change at any time. Visit [www.federalind.com](http://www.federalind.com) for the most current specs.

| MODEL                               | DIMENSIONS<br>(Includes End Panels)              |
|-------------------------------------|--|
| <input type="checkbox"/> LMDM4878SC | 49.7 x 40.2 x 78 (in)<br>1262 x 1021 x 1981 (mm) |

STANDARD FEATURES

Model Features

- Choice of six standard laminates on exterior
- Black metal front kick plate and trim with galvanized steel back
- White interior
- Moisture resistant end panel construction with field replaceable tempered thermo-pane glass
- Condenser air filter cleaning indicator light
- Easy to remove washable condenser air filter
- Energy saving night curtain
- Cord and plug
- Recessed casters with rear located floor locks
- Stainless steel slanted display deck to merchandise up to 12 milk crates (13"X13")
- Front access catch pan for broken milk containers

Refrigeration

- Electronic temperature control with on demand defrost
- PTC Condensate heater provided for a totally self-contained system
- Refrigeration controls maintain 35°-38°F (1.6°-3.3°C)  
Note: Case temperature will vary if the air curtain is disrupted
- Insulated with high-density urethane foam
- Thermometer
- R449 refrigerant, EPA SNAP compliant

Shelving

- One adjustable white metal shelf with LED light and price tag molding.
- Shelf can be flat or slanted downward at 10°

Lighting

- 3500K LED top and shelf light, DLC certified, IP 65 rated

Agency Approvals

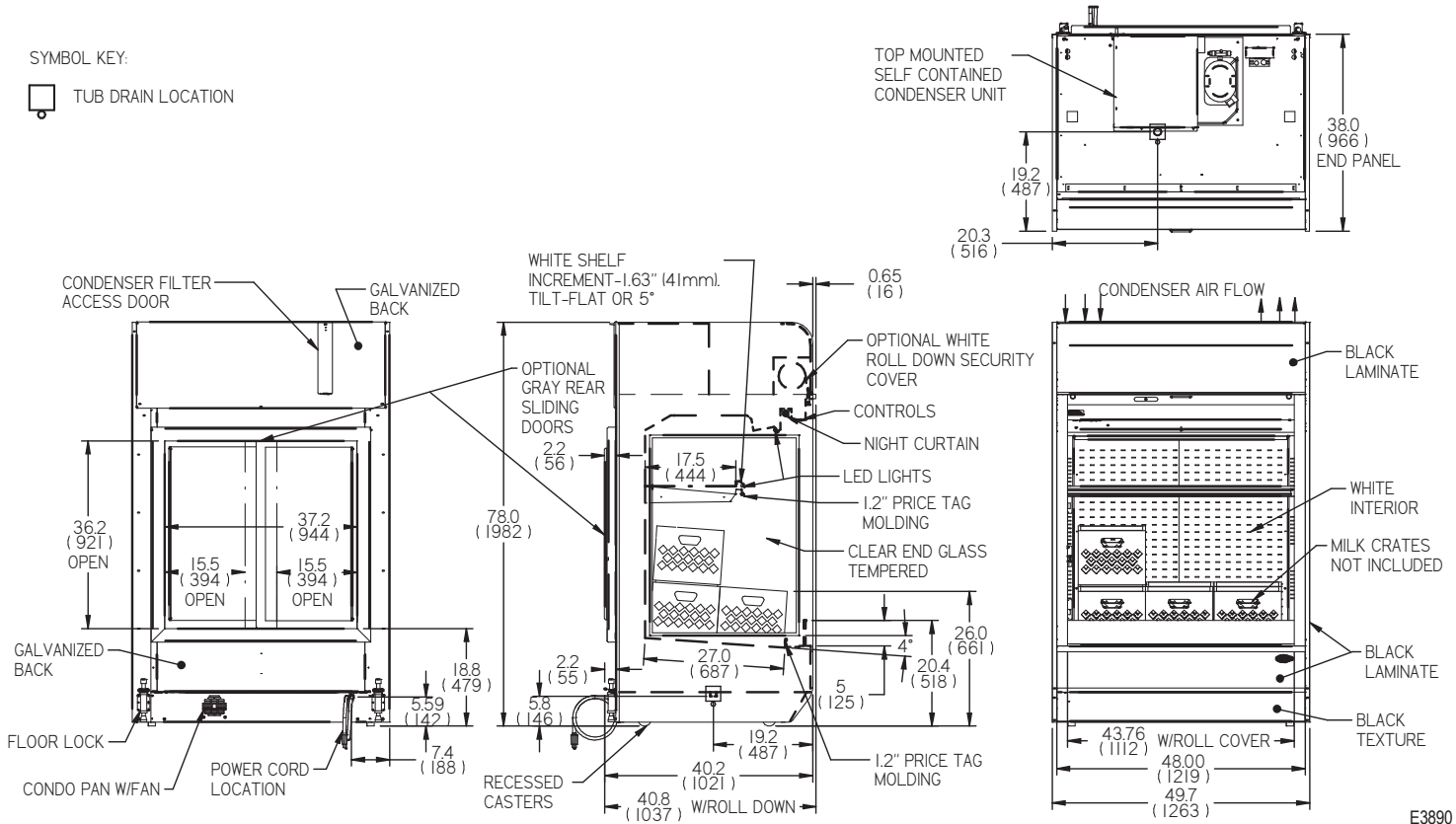
- UL, C-UL and UL Sanitation listed to NSF-7, Type I conditions
- DOE 2017 compliant

|       |   |
|-------|---|
| AIA # | <b>High-Profile Self-Serve Refrigerated Milk Merchandiser 78" H X 40" D X 50" W</b> |
| SIS # | Product Specifications  |

|   |   |                              |
|---|---|------------------------------|
| Intended Environment: Type I (Self Contained) - Designed to operate in maximum ambient conditions of 75°F (24°C) and 55% relative humidity. |   |                              |
| <b>Zone</b>   | <b>Intended Product To Be Displayed</b> | <b>Avg prod temp °F / °C</b> |
| All   | Packaged Refrigerated Products          | 35 - 38°F / (1.6 - 3.3°C)    |

**DIMENSION: xx"/(mm)**  
**DIMENSION TOLERANCE +/- 0.25(6.4)**

SYMBOL KEY:  
 TUB DRAIN LOCATION



E3890

| MODEL      | DIMENSIONS |      |      |       | SHELVES | SHIPPING WHT |      | SELF CONTAINED |             | NEMA PLUG |
|------------|------------|------|------|-------|---------|--------------|------|----------------|-------------|-----------|
|            | L          | D    | H    | UNITS |         | LBS          | KILO | VOLTAGE        | AMPS        | CONFIG    |
| LMDM4878SC | 49.7       | 40.2 | 78   | in    | 1       | 1150         | 522  | 208-240/60/1   | MAX FUSE 20 | 6-20P     |
|            | 1262       | 1021 | 1981 | mm    |         |              |      |                |             |           |

- Case temperature will vary if the air curtain is disrupted.
- A 208-240 volt, 60 hertz, 1 phase, 2-wire plus ground power supply is required.
- Due to continuing engineering improvements, specifications are subject to change without notice.



**FEDERAL INDUSTRIES**  
 A Standex Company  
 215 Federal Avenue, Belleville, Wisconsin 53508-9201

**Phone:** 800-356-4206  
**Fax:** 608-424-3234  
**Email:** Geninfo@Federalind.com  
**Website:** Federalind.com