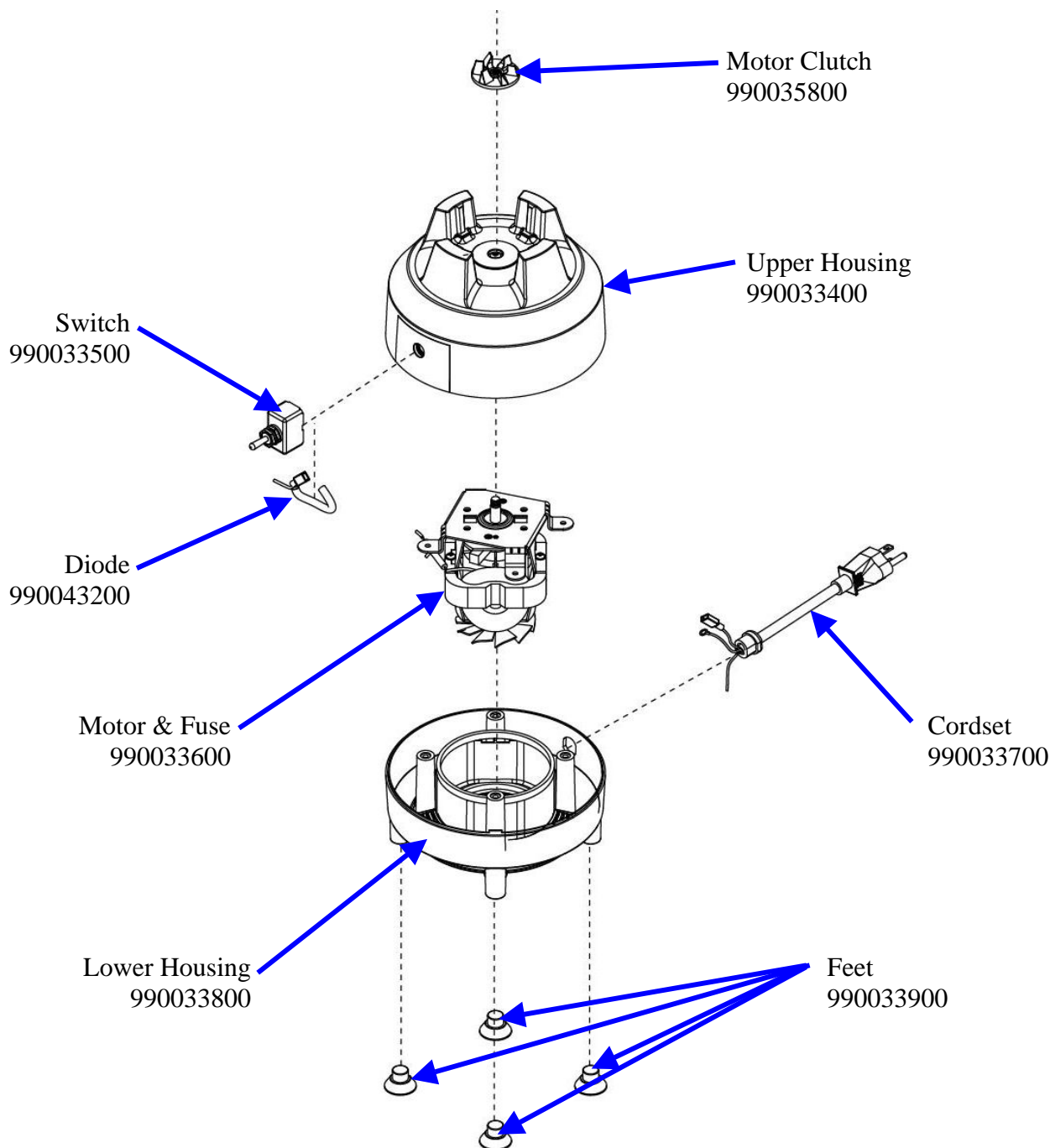


Replacement Parts Diagram

HBB908 (Series A-B)

PROPRIETARY RIGHTS NOTICE This document and all information contained within it is the property of Hamilton Beach Brands, Inc. (HBB). It is confidential and proprietary and has been provided to you for a limited purpose. It must be returned or destroyed upon request. Disclosure, reproduction or use of this document and any information contained within it, in full or in part, for any purpose is forbidden without the prior written consent of HBB. No photographs may be taken of any article fabricated or assembled from this document without the prior written consent of HBB.



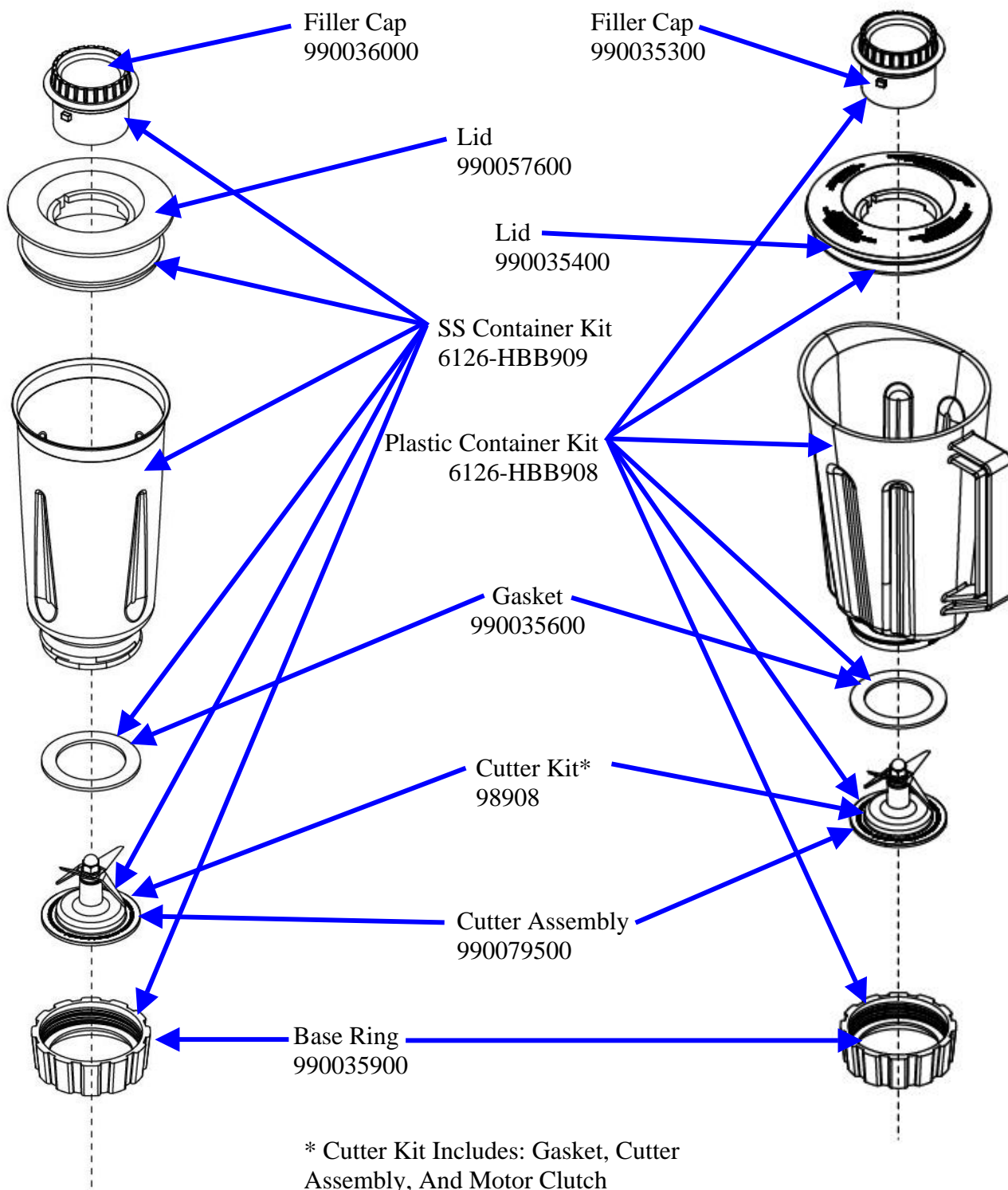
Not Shown:
Motor Brush Kit
990075100

Hamilton Beach 4421 Waterfront Drive Glen Allen, VA 23060	Revision Description:		Added Brush Motor Kit					
	Request Number:	HQE-8577	Revision Date:	11/04/09	Approved by:	HQE-8577		
	Issue Code(s):	CS, SP	Page:	1 of 2	Document #:	510000200	Rev:	E

Replacement Parts Diagram

HBB908 (Series A-B)

PROPRIETARY RIGHTS NOTICE This document and all information contained within it is the property of Hamilton Beach Brands, Inc. (HBB). It is confidential and proprietary and has been provided to you for a limited purpose. It must be returned or destroyed upon request. Disclosure, reproduction or use of this document and any information contained within it, in full or in part, for any purpose is forbidden without the prior written consent of HBB. No photographs may be taken of any article fabricated or assembled from this document without the prior written consent of HBB.



Hamilton Beach 4421 Waterfront Drive Glen Allen, VA 23060	Revision Description:		Added Brush Motor Kit					
	Request Number:	HQE-8577	Revision Date:	11/04/09	Approved by:	HQE-8577		
	Issue Code(s):	CS, SP	Page:	2 of 2	Document #:	510000200	Rev:	E