



Ice Machine Cleaning & Sanitizing

HOSHIZAKI

KM-340MAH, MWH
KM-515MAH, MWH, MRH
KM-600MAH
KM-650MAH, MWH, MRH
KM-901MAH, MWH, MRH/3

The ice maker must be cleaned & sanitized at least once a year.

Cleaning Prep:

- 1 Remove the **Front Panel**, move the control switch to **OFF**. After 3 min., move the switch to **ICE**, then replace the panel.
 - 2 After 3 min., remove the **Front Panel**, move the switch to **OFF**.
 - 3 Remove all ice from the ice storage bin and/or dispenser.
- ⚠ **WARNING! IF ON DISPENSER**, turn off the dispenser power supply after dispensing all the leftover ice.



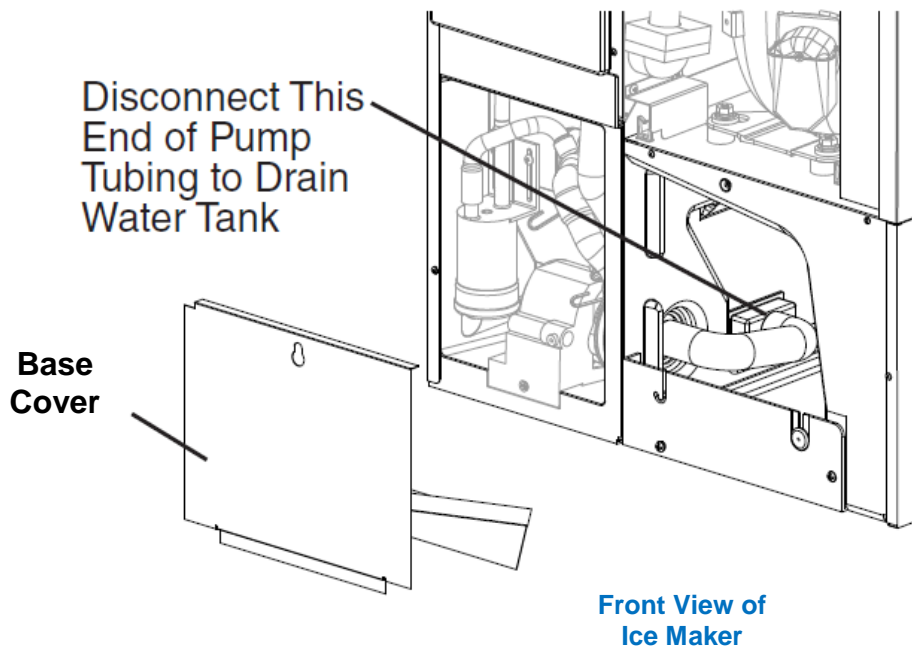
⚠ WARNING!

DO NOT leave icemaker unattended when panels are off

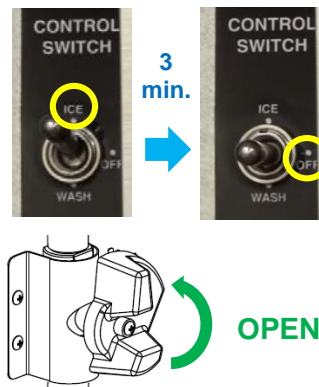
AMMONIA Cleaners



Cleaning:



- 4 Remove the **Base Cover**, disconnect the **Pump Tubing**. After the water tank has drained, reconnect **Pump Tubing**. Do not replace the base cover at this time.
 - 5 Refill water tank by moving the control switch to **ICE**, replace the **Front Panel**. After 3 minutes, remove the **Front Panel**, then move the control switch to **OFF**.
 - 6 Remove the **Front Insulation Panel**. Pour **14 fl.oz (414 ml)** of Hoshizaki **Scale Away** into the water tank. Replace the **Front Insulation Panel**. Turn the cleaning valve left until completely vertical (open).
- ⚠ **NOTICE! AVOID EXCESSIVE FOAMING**, wait 1 minute before next step.
- 7 Move the control switch to **WASH**, replace **Front Panel**.



Sanitizing:

- Fill the water tank 14
 - **CLOSE** the cleaning valve
 - Move control switch to **ICE**, replace the front panel
 - After 3 minutes, remove the front panel
 - Move control switch to **OFF**
-
- Remove the front insulation panel 15
 - Pour **.78 fl. oz (23 ml)** of chlorine bleach* into the water tank
 - Replace the front insulation panel
 - **OPEN** the cleaning valve
- * Use bleach without additives. Additives cause excessive foaming, and reduces effectiveness of the cleaning.
- Wait 1 minute to avoid excessive foaming 16
 - Move control switch to **WASH**, replace the front panel
-
- After 45 minutes, remove the front panel 17
 - Move control switch to **OFF**
 - Disconnect the pump tubing 18
 - After the water tank has drained, reconnect the pump tubing

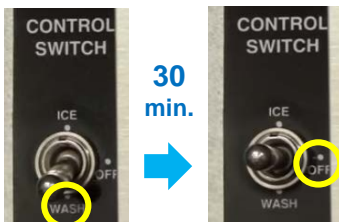
↳ continued on the back...

8 After 30 minutes, remove **Front Panel**, then move the control switch to **OFF**.

⚠ **NOTICE! DO NOT** leave the control switch on **WASH** for extended periods when water tank is empty. It will damage water pump seals.

9 Remove the **Pump Tubing**. Clean all items (See Step 10). Once water tank has drained, replace and reconnect all the items.

10 In bad water conditions, a more thorough cleaning may be required. Turn off power supply, clean all items in a solution of **5 oz. of Scale Away per gallon of warm water**. Rinse and replace the cube guides, float switch, water supply tubes, spray tubes and spray guides. Turn on power supply. Otherwise, continue to Step 11.



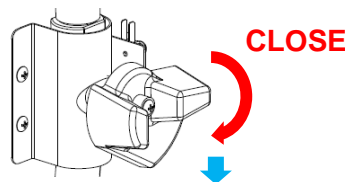
Cleaning Rinse:

11 Turn the cleaning valve to the *right* until completely horizontal (closed). Move the control switch to **ICE**, replace **Front Panel**. After 3 minutes, remove the **Front Panel**, move switch to **OFF**.

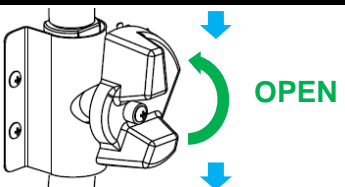
⚠ **NOTICE! ICE MACHINE WILL NOT WORK**, unless valve is completely closed.

12 Turn the cleaning valve to the *left* until completely vertical (open). Move the control switch to **WASH**, replace the **Front Panel**. After 5 minutes, remove the **Front Panel**, switch to **OFF**.

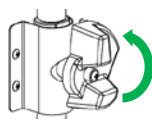
13 Disconnect the **Pump Tubing**. After the water tank has drained, reconnect **Pump Tubing**. Continue to **Sanitation – Step 14 on front...**



CONTROL PANEL
ICE > 3 minutes > OFF

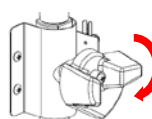


CONTROL PANEL
WASH > 5 minutes > OFF



OPEN cleaning valve:

- To allow cleaning solution flow to the inside the evaporator
- Turn left to open (vertical)



CLOSE cleaning valve:

- Must be closed for normal ice making operation
- Turn right to close (horizontal)

↴ sanitizing continued...

RINSE 1: (Steps 19-21)

19

- CLOSE** cleaning valve
- Move control switch to **ICE**, replace the front panel
- After 3 minutes, remove the front panel
- Move control switch to **OFF**

20

- OPEN** cleaning valve
- Move control switch to **WASH**, replace the front panel
- After 5 minutes, remove the front panel
- Move control switch to **OFF**

21

- Disconnect the pump tubing
- After the water tank has drained, reconnect the pump tubing

RINSE 2 & 3: (Steps 22-28)

22

- Repeat 2x (Steps 19–21) for complete ice/food safety
- Clean the dispenser / storage bin liner with a neutral cleaner (dish soap)
- Rinse thoroughly

29

- CLOSE** cleaning valve
- Move control switch to **ICE**, replace front panel

- Replace all panels in their correct positions

30

⚠ **NOTICE!**

IF ICE MAKER IS ON DISPENSER, remember to turn on the dispenser after cleaning

DOWNLOAD COMPLETE INSTRUCTION MANUAL:



hoshizakiamerica.com/support

Type in the model number of your ice machine (including dashes) to download manuals

CLEANING SCHEDULE

- | | |
|----------------------|----------------------------|
| ● Scoop | Dish soap, rinse well |
| ● Water Filters | Check psi, change if req'd |
| ● Exterior | Dish soap & damp cloth |
| ● Bin Door/Top Kit | Warm water & clean cloth |
| ● Ice Maker/Bin | Follow these instructions |
| ● Water Supply Inlet | Clean inlet screen |
| ● Condenser | Inspect. Clean with brush |
| ● Water Hoses | Inspect. Replace if req'd |
- DAILY | ● MONTHLY | ● YEARLY

⚠ **WARNING!**

DO NOT use ammonia type cleaners. Can cause damage to icemaker

WEAR liquid-proof gloves and goggles to protect skin & eyes from cleaning & sanitizing chemicals

