



Your Solutions Partner

# Specifications

F.O.B. Sedalia, Missouri 65301



613-G3

### OPTIONS:

- Stainless steel interior
- 27" stainless steel angular legs
- Stainless steel back enclosure panel
- Seismic feet
- Field stacking kit
- Common gas manifold
- 48" flexible disconnect, w/restraining device
- Down draft hood
- Flue deflector
- Casters
- Extra oven racks
- Prison package—tamper proof screws, lexan hinged cover with lockable clasp
- Extended warranty

**Approval Stamp(s):**

### PRODUCT INFORMATION:

PROJECT: \_\_\_\_\_

ITEM: \_\_\_\_\_

QUANTITY: \_\_\_\_\_

MODEL:

### Duke Convection Ovens Single Deck—Deep Depth—Gas

- 613-G3 Single deck, deep depth

### STANDARD FEATURES

- 6 racks/13 rack positions
- Porcelain interior finish
- 65/35 stainless steel dependent doors - chain driven
- Double pane glass in 65 door
- 27" angular painted legs/adjustable feet
- 2 speed fan

### OVEN SECTION

- Stainless steel front, sides and top
- 1 1/2" insulation on bottom, sides and back
- 3" insulation on top
- Interior Lights

### BURNER SYSTEM

- 46,000 BTU
- High output atmospheric burner system
- Main gas shut off valve
- Built-in gas regulator

### OVEN CONTROLS

- "V"—Basic snap action thermostat (200°-500°F), 60 minute electric dial timer with continuous sound buzzer, 2-speed fan
- "XX"—Solid state digital time and temperature controls, 12-hour countdown timer, **Cook and Hold** feature, 2-speed fan, Pulse fan capability

DUKE MANUFACTURING CO.  
 2305 N. Broadway  
 St. Louis, MO 63102  
 800.735.3853 Toll Free  
 314.231.5074 Fax  
 www.dukemfg.com  
 SS-1072-613 G3-Single-Deep-Gas

### Certifications



Specification subject

**WARNING** For CA residents: go to [www.dukemfg.com/prop65](http://www.dukemfg.com/prop65) for prop 65 warning

REV D 06/15/2022

DUKE CONVECTION OVENS - SINGLE - STANDARD DEPTH - GAS

Catalog No. DCO-GSINGSD

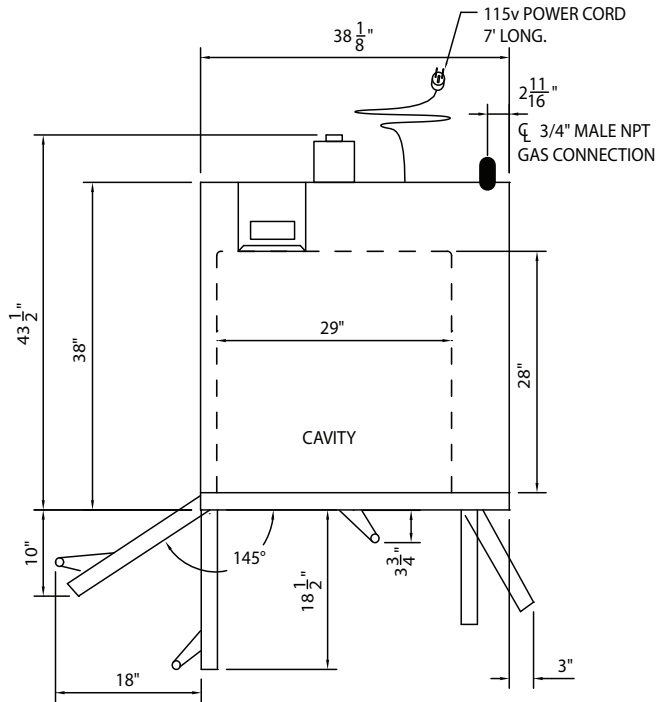
A.I.A. File No. 35-C-13

# DUKE CONVECTION OVENS

## SINGLE DECK—GAS—DEEP DEPTH

A.I.A. File No. 35-C-13

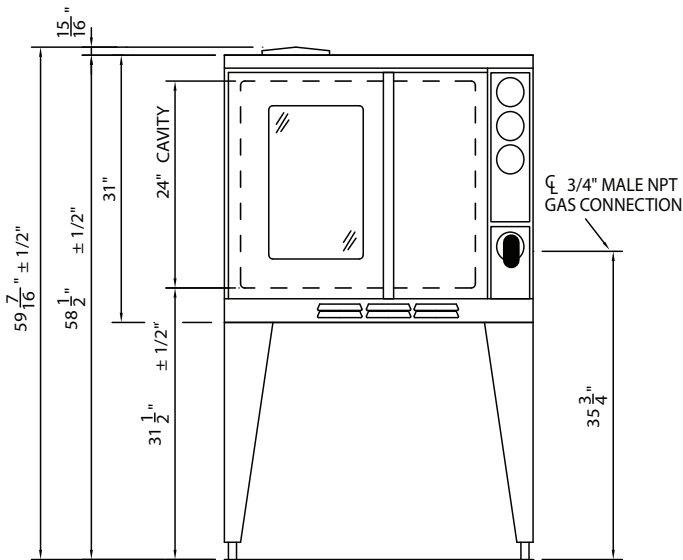
Catalog No. DCO-GSINGSD



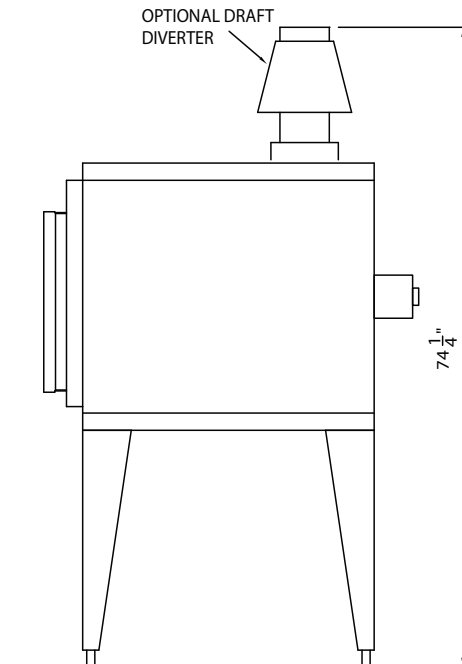
**TOP VIEW**

| Gas Specifications   |                 |        |
|--|-----------------|--------|
| <b>613-G3</b>  | <b>BTU/Hour</b> | 46,000 |
| Regulated gas pressure required 3.5"WC natural /10" WC propane |                 |        |
| Combustible surface clearance - 1" side, 1" rear, 6" floor     |                 |        |
| ● Gas connection   |                 |        |
| 3/4" Gas connection  |                 |        |
| Electrical requirements: 3.5 Amps/ 115V                        |                 |        |
| Standard 115V units supplied with 5' cord and plug             |                 |        |

Specify gas type  
Specify altitude over 2000 feet



**FRONT VIEW**



**RIGHT SIDE VIEW**

**DIMENSIONS:**

**Freight Class: 85**

| Model         | Height |       | Width |      | Depth  |       | Cube ft.<br>crated | Weight |       |
|---------------|--------|-------|-------|------|--------|-------|--------------------|--------|-------|
|               | in.    | cm    | in.   | cm   | in.    | cm    |                    | lbs.   | kg    |
| <b>613-G3</b> | 60     | 152.4 | 38    | 96.5 | 43 1/2 | 110.3 | 65.4               | 540    | 245.5 |

DUKE CONVECTION OVENS- SINGLE - DEEP DEPTH - GAS



Your Solutions Partner

**Duke Manufacturing Co.**  
2305 N. Broadway  
St. Louis, MO 63102

Phone: 314-231-1130  
Toll Free: 1-800-735-3853  
Fax: 314-231-5074

[www.dukemfg.com](http://www.dukemfg.com)

Printed in U.S.A  
© 2019, Duke Manufacturing Co.