



# KM-520/660MAJ-E

## SLIM-LINE MODULAR CRESCENT CUBER



KM-520/660MAJ-E  
07/02/24  
Item # 13460

Item #: \_\_\_\_\_  
 Project: \_\_\_\_\_  
 Qty: \_\_\_\_\_  
 AIA#: \_\_\_\_\_

**W x D x H**  
559 x 695 x 711 mm

### KMEDGE™

**Air-Cooled**

KM-520MAJ-E

KM-660MAJ-E

Shown on optional bin: B-300






**Available on Bins/Dispensers:**

- |         |         |          |         |
|---------|---------|----------|---------|
| B-250SF | B-700SF | B-1150SS | DB-200H |
| B-300SF | B-800SF | B-1300SS | DM-200B |
| B-500SF | B-900SF | DB-130H  |         |

Top kit may be required. See bin spec sheets.

## Features

- ▶ Individual crescent cube
- ▶ Factory-installed ultrasonic bin control can be adjusted on site
- ▶ Simple, one-hour cleaning process 

- Durable construction with fewer parts
- Self-diagnostic programming automatically adjusts to changing conditions
- Snap fit parts for easy cleaning
- Stainless steel double-sided evaporator
- CycleSaver™ design 
- EverCheck™ alert system 
- Removable air filters (air-cooled model only)
- Power cord is 3000mm long with Type G plug
- R-404A Refrigerant

### Warranty:

Call factory for information.

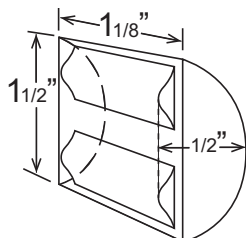
Shipping: (LxWxH) 846 x 652 x 875 mm    Volume: 0.492m³



| Condenser | Model       | ICE PRODUCTION  |     | WATER USAGE                             |   | ELECTRICAL                        |                                    |          |               |  |                              |                              |                           |
|-----------|-------------|---|-----|---|---|-----------------------------------|------------------------------------|----------|---------------|--|------------------------------|------------------------------|---------------------------|
|           |             | Air / Water Temp<br>kg per 24 hours<br>21°/10°C    32°/21°C |     | Potable<br>liters per 45 kg<br>32°/21°C | Condenser<br>liters per 45 kg<br>32°/21°C | kWh Used<br>per 45 kg<br>32°/21°C | Min. Circuit/<br>Max. Fuse<br>Size | Amperage | Voltage       | Circuit<br>Wires<br>(including ground) | Heat<br>Rejection<br>BTU/hr. | Refrigerant<br>Charge Amount | Net / Ship<br>Weight (kg) |
| Air       | KM-520MAJ-E | 238   | 197 | 108                                     | N/A                                       | 6.52                              | 15A                                | 8.4A     | 220-240V/50/1 | 3                                      | 7,300                        | 500g                         | 59 / 68                   |
| Air       | KM-660MAJ-E | 280   | 262 | 52                                      | N/A                                       | 4.85                              | 15A                                | 8.4A     | 220-240V/50/1 | 3                                      | 7,300                        | 760g                         | 59 / 68                   |

Power cord included.

### KMEdge™ Cube Dimensions\*



\* approximate size in inches, image not to scale

### Operating Limits

- Ambient Temp Range    7 - 38°C
- Water Temp Range        7 - 32°C
- Water Pressure            69 - 779KPa
- Voltage Range             198-254V
- If GFCI is required, a GFCI breaker MUST be used in lieu of GFCI receptacle

### Service

- Panels easily removed and all components accessible for service.
- Allow 15 cm (6") clearance at rear, sides, and top for proper air circulation and ease of maintenance/service.

### Plumbing

- Icemaker Water Supply Line: Minimum 6 mm Nominal OD Copper Water Tubing or Equivalent
- Icemaker Drain Line: Minimum 18 mm Nominal OD Hard Pipe or Equivalent

### Water Filter

Please refer to water filter specification sheet for recommendations.



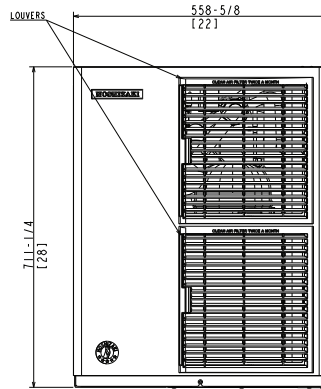
# KM-520/660MAJ-E

## SLIM-LINE MODULAR CRESCENT CUBER



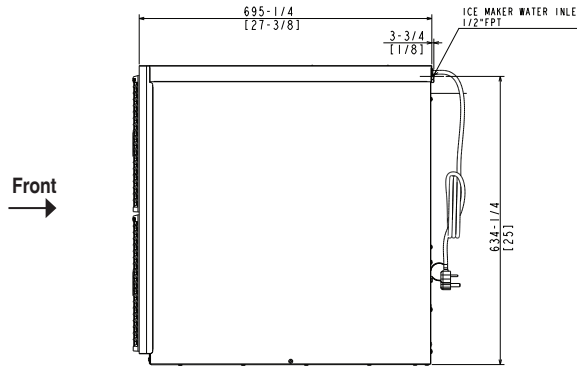
KM-520/660MAJ-E  
07/02/24  
Item # 13460

FRONT VIEW

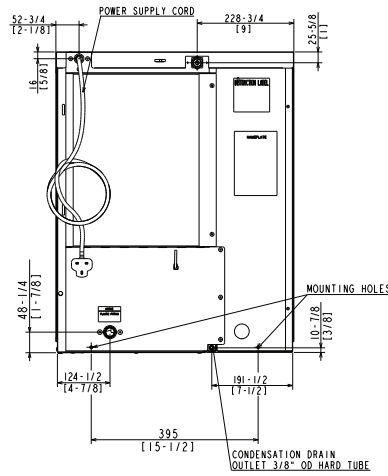


mm  
[inch]

SIDE VIEW



REAR VIEW



BOTTOM VIEW

