

VICTORY[®]

ULTRASPEC

PROJECT: _____

ITEM # _____ QTY: _____

MODEL # _____

AIA # _____ SIS # _____

PASS-THRU GLASS DOOR WARMING CABINET

HSA-1D-1-PT-GD



EXCLUSIVE WARRANTY

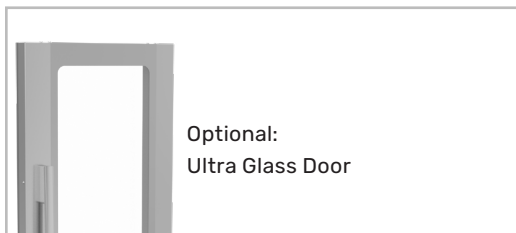
- ▶ 7 Year Parts & Labor Warranty
- ▶ Exclusive 2 Year Warranty On Magnetic Door Gaskets
- ▶ Lifetime Warranty On Handles & Hinges (parts only)

CABINET CONSTRUCTION

- Stainless Steel Exterior
- Aluminum Interior
- Glass Door
- Heavy Duty Cam Lift Hinges With 120 Stay-Open Feature
- LED On/Off Selection Within Controller
- Heavy-Duty Cylinder Locks
- Adjustable Door Wiper Gaskets
- One Piece, Snap-In Magnetic Door Gaskets
- Low Profile Vertical Door Handles
- Hinged Front Shroud
- Energy Saving Thermal Breaker
- Stainless Steel Breaker Caps
- 3 Silver Freeze Wire Shelves
- 6" High Adjustable Stainless Steel Legs
- 8' Cord And Plug (see electrical data for details)

FEATURES

- Full Electronic Control With Touchpoint Interface
- Adjustable Electronic Temp Control From 80°F To 180°F
- Built-In, Adjustable Humidity Control Vent
- Safety Shielded Strip Type Heating Elements
- Externally Mounted Blower Maintains Even Temperatures
- Manager's Lockout Feature



Please Verify Qualifying Units By Visiting:
www.energystar.gov/cfs

OPTIONS & ACCESSORIES

- Stainless Steel Back And Shroud
- Stainless Steel Kick Plate
- Ultra Glass Door (as shown above)
- Additional Shelves
- Tray Slides (type A & A/C)
- Door Swing Orientation (at time of order)
- 6" Seismic Legs
- 3" Or 6" Casters

3779 Champion Blvd, Winston-Salem, NC 27105

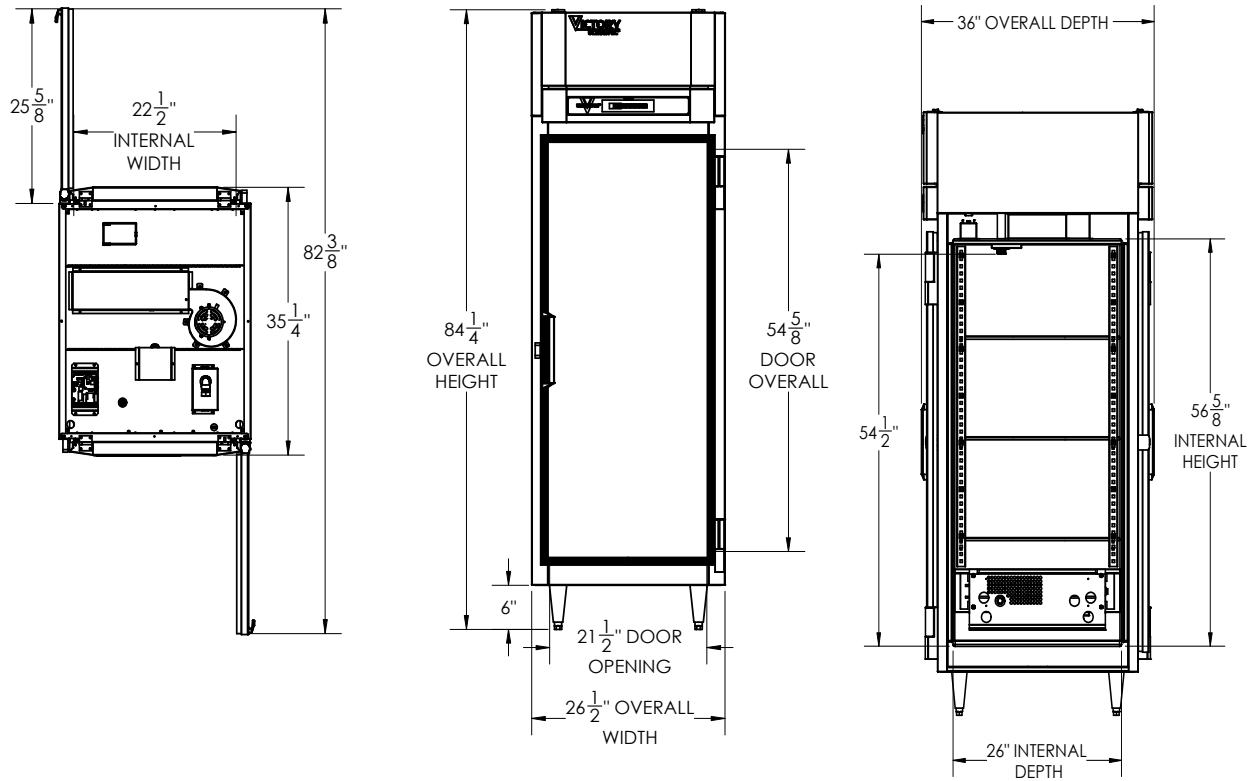
ph: (888) 845-9800 | fax: (800) 253-5168

Sales@VictoryRefrigeration.com | VictoryRefrigeration.com

Rev. 7/1/24 Printed in U.S.A.

APPROVAL: _____ DATE: _____

PASS-THRU GLASS DOOR WARMING CABINET



We reserve the right to change specifications and product design without notice. Such revisions do not entitle the buyer to corresponding changes, improvements, additions or replacements for previously purchased equipment. Dimensional tolerances +/- 1/4". Metric dimensions (MM)

12" Top clearance is required

CHARACTERISTICS		ELECTRICAL DATA		SHIPPING DETAILS	
Net Capacity (cubic ft.)	23.7	Cabinet Voltage	208-240/60/1	Height	88"
Width, Overall (in.)	26 1/2"	Total Amperes	6.8	Width	35"
Depth, Overall (with handle)	36"	NEMA Plug (8' cord)	6-20P	Depth	48"
Height Overall (6" legs)	84 1/4"	Heater Watts	1500	Crated Weight	535 lbs
Depth, Door Open 90°	82 3/8"				
Door Openings (in.)	21 1/2" x 54 5/8"				
No. Of Doors/Shelves	2/3				

3779 Champion Blvd, Winston-Salem, NC 27105 | ph: (888) 845-9800 | fax: (800) 253-5168

Sales@VictoryRefrigeration.com | VictoryRefrigeration.com

Rev. 7/1/24 Printed in U.S.A.