



460 Southport Commerce Blvd.
 Spartanburg SC 29306
 Phone: 864-574-6004
 Fax: 864-574-6005
 www.ojedausa.com
 sales@ojedausa.com

Project: _____
 Model #: _____
 Item #: _____ Qty: _____
 Approval: _____

OPEN AIR MERCHANDISER

ALPA-77H SLIM



STEEL CONSTRUCTION

Robust steel construction minimizes the use of plastic materials resulting in an environmentally friendly design.

CARE FREE CONDENSER

The finless spiral condenser design prevents dust/dirt buildup allowing maximum long term efficiency.

ELECTRONIC CONTROL

The intelligent temperature control is programmed to ensure the correct operation of the equipment and maintain products at an optimum temperature.

LED LIGHTING

LED lighting lasts longer than fluorescent lighting, it reducing energy consumption, which generates minimal heat. All of this makes LED lighting great for the environment.

HOT GAS EVAPORATION

Hot gas heated drain pan for condensate evaporation that eliminates the need of floor drains or electric heaters.

LED SHELVES

LED lighting below each shelf. Shelves are adjustable with tag molding.

NIGHT CURTAIN

30% less energy consumption when closed.

OPERATION TEMPERATURE

33°F to 38°F

CUSTOM GRAPHICS

Standard color: black

Dimensions			Crated Dimensions				Shelves	HP	Voltage	NEMA config	Amps	Crated Weight	
	W	D	H		W	D	H	5	1/2	120	5-15P	10	512 lbs
(in)	36.3	23	80.1	(in)	40	26.4	83.9	Net Capacity (cf): 9			Energy Consumption: 14.75 kw-hr/day		
(mm)	920	587	2035	(mm)	990	670	2130						

*Inches rounded up one decimal place *Specifics may change without notification



CABINET CONSTRUCTION

- High-density, CFC-Free, polyurethane insulation
- Large low-E double pane tempered thermal glass side panels
- Manual retractable night curtain for increased energy savings
- Exterior: Galvanized metal cabinet with powder coated painted surface
- Interior: Easy to clean pre-painted steel

SHELVING & LIGHTING

- Adjustable shelves with tag molding.
- LED horizontal lighting from top, and at bottom of each shelf.

OPERATING CONDITIONS

- Open Air models should not be installed in any area where the air curtain will be disrupted. This includes placement near any HVAC vent, open doorway, or fan.
- The unit is rated for an environment where temperatures remain below 75°F and humidity does not exceed 55%
- Areas with direct sunlight should also be avoided

WARRANTY

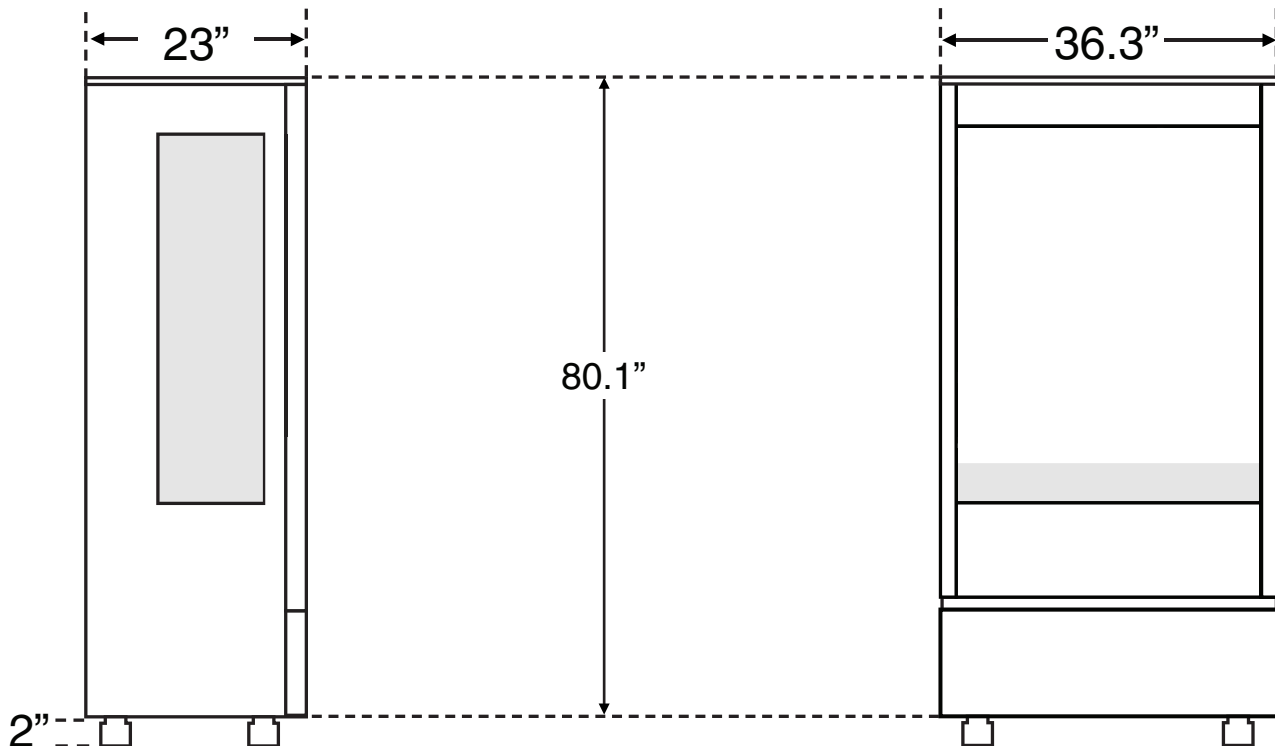
- 3 year parts and labor warranty
- 5 year compressor

REFRIGERATION

- Maintenance free condenser
- Automatic defrost cycle
- Hot gas heated pan for condensate evaporation
- Electronic temperature control
- Easy to reach components for maintenance
- R-290 refrigerant

ACCESSORIES

- 6" stainless steel legs
- Casters
- Shelf product retainers
- Custom graphics
- Glass Doors



*Specifics may change without notification

