

Self-Contained Pass Thru Sliding Door Back Bar Refrigeration Refrigeration



PTSD60L

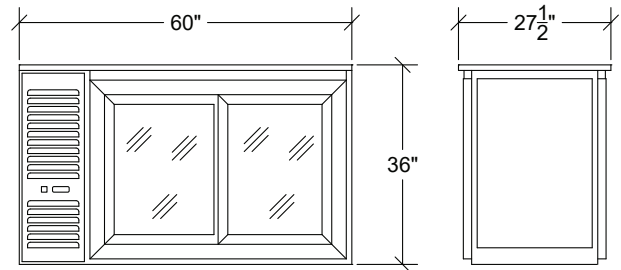
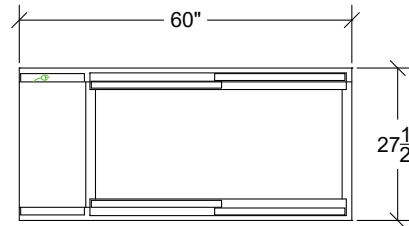
Standard Features

- Doors on both sides make it accessible from front and back
- 1" Stainless Steel Top
- Heavy Duty Sliding Doors with built-in locks
- Built-in Cool White LED Lighting (7000K)
- All stainless steel, coved corner interior
- Digital thermostat
- DynamicChill 360° Technology
- NSF epoxy coated durable shelves, 1 bottom & 2 adjustable shelves per door
- Pre-drilled bottom for optional legs or casters (uses 1/4-20 self tapping 1/2"L screw)
- R290 Natural Refrigerant
- Eco-friendly refrigerant and insulation
- 5-Year compressor warranty
- 1-Year parts & labor warranty

Specifications

Electrical	<ul style="list-style-type: none"> ▪ 115 V, 1 Phase, 60 Hz ▪ Furnished with 8'-0" plug-in cord ▪ NEMA 5-15P plug configuration ▪ Dedicated 15 amp circuit recommended ▪ 2.2 amps, 1/4 HP
Refrigeration	<ul style="list-style-type: none"> ▪ R290 Hydrocarbon Refrigerant ▪ 30°F - 40°F operating range ▪ Digital thermostat on front grille
Plumbing	<ul style="list-style-type: none"> ▪ No drain required ▪ Condensate evaporator pan included
Insulation	<ul style="list-style-type: none"> ▪ 2" thick foamed-in-place polyurethane
Interior	<ul style="list-style-type: none"> ▪ 20 gauge stainless steel walls with coved corners ▪ NSF epoxy coated durable shelves - one bottom and two adjustable shelves per door
Exterior	<ul style="list-style-type: none"> ▪ Sides: 20 gauge stainless steel ▪ Front: Glass with black vinyl doors ▪ Back: Glass with black vinyl doors ▪ Top: 1" stainless steel top
Doors	<ul style="list-style-type: none"> ▪ Heavy duty, glass with black vinyl sliding doors ▪ 19-3/4"W x 29-11/16"H door opening

Model	Length	Height	Depth	Doors	Weight	Amps	HP
PTSD60L	60"	36"	27-1/2"	4	380	2.2	1/4



Case Capacity

Model	PTSD60L
Long Neck Bottles	15.5
12 oz Cans	20
Wine Bottles (ea)	162



CONFORMS TO UL Std 471 & NSF STD 7

This equipment is intended for the storage and display of non-potentially hazardous bottle or canned products only.

This equipment is intended for use in an area where the ambient temperature typically does not exceed 75 °F.