

TITAN STAINLESS

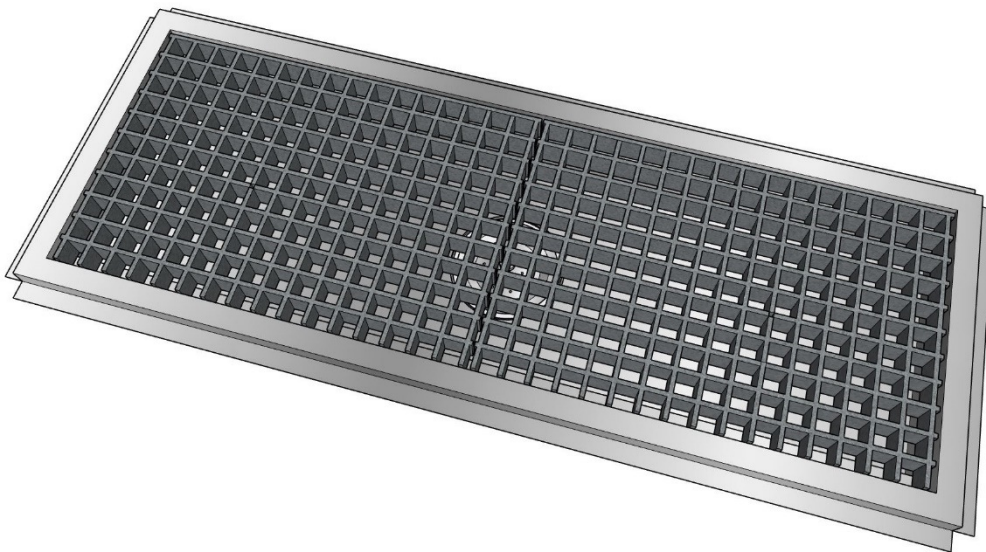
CUSTOM FOODSERVICE FABRICATION

502 Usher Street · Pageland, SC · 704-243-8717 · www.titan-stainless.com



FLOOR TROUGH WITH FIBERGLASS GRATE

TITAN STAINLESS Floor troughs are made using all-welded heavy gauge stainless steel construction. The top and trough basin are constructed with 14 gauge stainless, and the basin is covered with a 5/8" radius. The grates are made with fiberglass which is 1-1/2"H. Grates are made at a maximum of 30" long for easy removal, and openings are 1-1/2" x 1-1/2" to prevent wheels, etc. from catching in the grate. A stainless steel drain which is roughly 6" in diameter is welded into the bottom of the trough basin, and features a removable, perforated basket strainer with lid to prevent any unwanted items from falling into the drain. A 3" diameter O.D. x 3" long welded drain pipe is also provided to facilitate plumbing into the building's drain lines (further plumbing components not provided).



MODEL NUMBER SELECTION / INFORMATION

(Example #: 4FBFLT-18)

Floor troughs are available in standard lengths from 2'-0" to 12'-0", in 1-foot increments. Standard widths (front-to-back) are available in 12", 18", and 24". These dimensions represent the outside of the top which sits flush with the floor (as illustrated below).

- See **AutoQuotes™** for full list of model numbers and pricing, along with all additional accessories
- Custom sizes and configurations are available upon request

