

Specification Sheet

Short Form Specifications

BlendPort® Direct Draw Dispenser, model _____.
 Foamed-in-place high density polyurethane insulation. Designed to accommodate all types of kegs. Stainless steel tops with draw line and drip tray. Lockable self-closing doors with recessed handles. Removable door gasket. Stainless steel floor and inner walls. Side-mounted evaporator. Balanced refrigeration system operates at 33°F – 41°F. Cool air directed into draft towers. 8-ft. cord with NEMA 5-15 plug. 24" front-to-rear. 48", 60", and 72" lengths available.



model #BPR-UDD-24-72

Item No.:	_____
Project No.:	_____
S.I.S. No.:	_____

Direct Draw Beer Dispensers

MODELS:

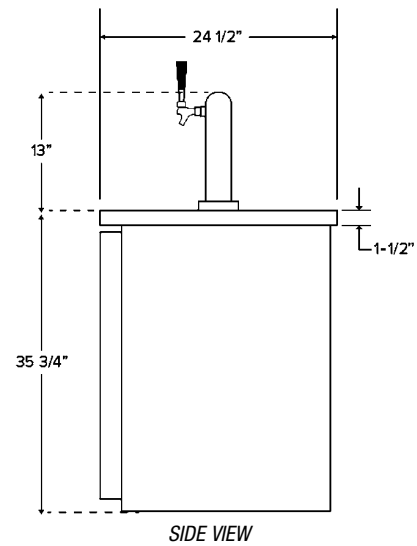
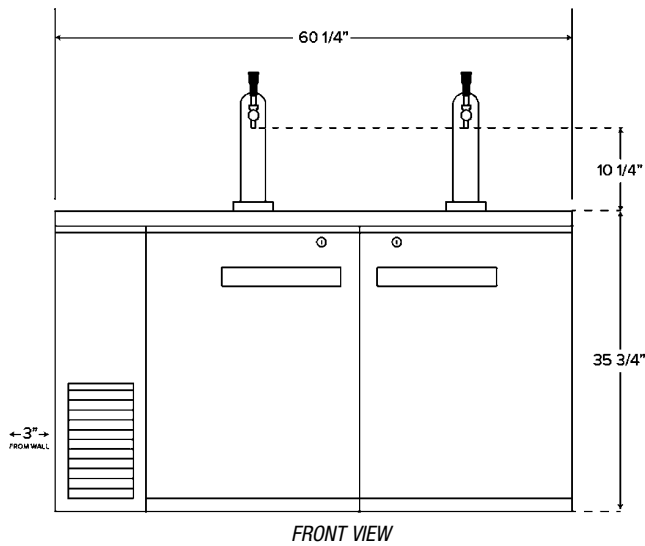
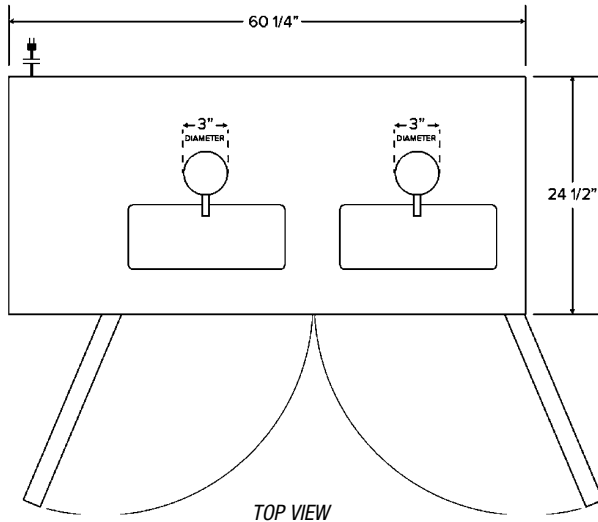
- BPR-UDD-24-48
- BPR-UDD-24-60
- BPR-UDD-24-72

Design & Construction Features

- Balanced refrigeration system maintains temperatures between 33°F - 41°F.
- Stainless steel tops with stainless steel beer tower(s) and drip trays.
- Durable wear-resistant black coated steel cabinet.
- Type 304 stainless steel floor and inner walls.
- Includes 2-"D" system keg couplers per beer tower.
- Self-closing doors feature recessed handles and keyed locks.
- Removable door gasket for ease of cleaning and replacing.
- Accommodates all types of beer kegs.
- 120-volt, 60-cycle, single-phase electricity
- Side-mounted evaporator optimizes interior cabinet space.
- One year parts and labor warranty and five year compressor warranty.

Item No.:	
Project No.:	
S.I.S. No.:	

Direct Draw Beer Dispensers



(model #BPR-UDD-24-60 shown)

width		length		height		# of doors	# of draft towers	holds up to	electrical data*	weight	model #
in.	mm	in.	mm	in.	mm						
24 1/2"	622	48 3/4"	1238	35 3/4"	908	2	1	(2) 1/2 kegs	1/3-HP, 120V, 6.4A	236 lbs.	BPR-UDD-24-48
24 1/2"	622	60 1/4"	1530	35 3/4"	908	2	2	(2) 1/2 kegs	1/3-HP, 120V, 6.4A	270 lbs.	BPR-UDD-24-60
24 1/2"	622	72 3/4"	1848	35 3/4"	908	3	2	(3) 1/2 kegs	1/3-HP, 120V, 7.4A	330 lbs.	BPR-UDD-24-72

* #All units are 60-cycle, single-phase.

All units feature one-year parts and labor warranty and five-year compressor warranty.

BlendPort[®]

An Eagle Group Company

100 Industrial Boulevard, Clayton, DE 19938-8903 USA

Phone: 800-441-8440 • Fax: 302-653-2065

Printed in U.S.A.
©2023 by Eagle Group

Rev. 03/23

Although every attempt has been made to ensure the accuracy of the information provided, we cannot be held responsible for typographical or printing errors. Information and specifications are subject to change without notice. Please confirm at time of order.