



3" OUTER DIAMETER DRAFT ARMS
Glycol Cooled



4016

JOB
AREA
ITEM NO.
MODEL NO.

MODELS		
4010	4016	4026
4010TF	4016TF	4026TF

KEY PRODUCT FEATURES AND BENEFITS

- The Draft Arm provides a simple, stylish design to fit any space
- The compact design makes it good fit for small areas – line up several for more taps and an aesthetic appeal
- Single hole mounting minimizes the footprint within valuable bar space
- Durable, stainless steel supply tube ensures beverage flavor will not be tarnished while dispensing
- Insulated dispensing head and shank bushings minimizes sweating to keep your bar clean, cools more efficiently for energy reduction, and reduces warm spots in the tower to give you the perfect pour
- Solid metal construction to withstand years of use
- 304 stainless steel shanks ensure purity of flavor from keg to tap

Quick Features:

- Available with 1, 2, or 3 faucets
- Offered in Polished Chrome or Tarnish-Free Brass
- Extra tall models available
- Faucets and tap handles sold separately
- NSF listed models available

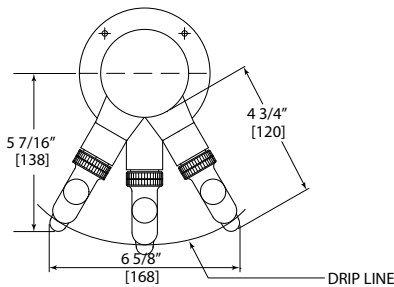
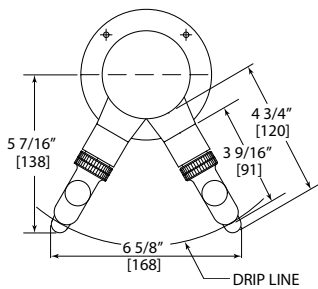
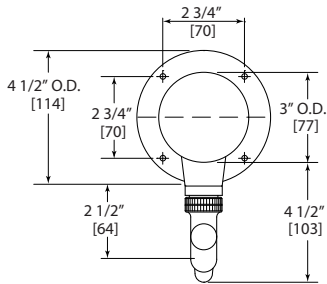


3" OUTER DIAMETER DRAFT ARMS

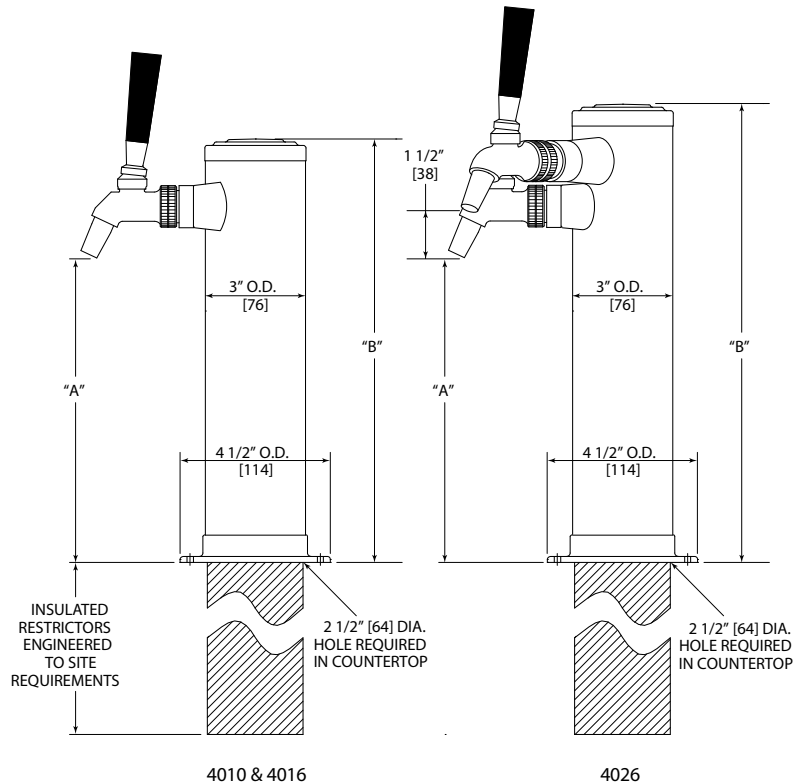
Glycol Cooled

NUMBER OF FAUCETS		1	2	3
DIMENSIONS: EXTERIOR (mm)	"A", Faucet Height* (mm)	8-63/64" (228)	8-63/64" (228)	8-63/64" (228)
	"B", Overall Height (mm)	12-11/16" (322)	12-11/16" (322)	13-11/16" (348)
STANDARD HEIGHT				
MODEL NUMBERS	Polished Chrome	4010	4016	4026
	Tarnish-Free Brass	4010TF	4016TF	4026TF
EXTRA HEIGHT: ADDS 1" TO OVERALL HEIGHT				
MODEL NUMBERS	Polished Chrome	4010-1	4016-1	-
	Tarnish-Free Brass	4010TF1	4016TF1	-
EXTRA HEIGHT: ADDS 2" TO OVERALL HEIGHT				
MODEL NUMBERS	Polished Chrome	-	-	4026-2
	Tarnish-Free Brass	-	-	4026TF2
EXTRA HEIGHT: ADDS 3" TO OVERALL HEIGHT				
MODEL NUMBERS	Polished Chrome	4010-3	4016-3	-
	Tarnish-Free Brass	4010TF3	4016TF3	-

*Faucet height assumes use of Perlick forward sealing faucet.



OPTIONAL MATCHING DRIP PAN - 3" O.D. DRAFT ARM			
Style	# of Faucets		
	1	2	3
Top Mounted - 5000 Series	5015/5020	5020	5020
Top Mounted - C18000 Series	C18635A/C18640A	C18640	C18640
Recessed	C11988A/C21379A	C21379A	C21379A



4010 & 4016

4026

Form No. 050196A
Rev. 02.13.23